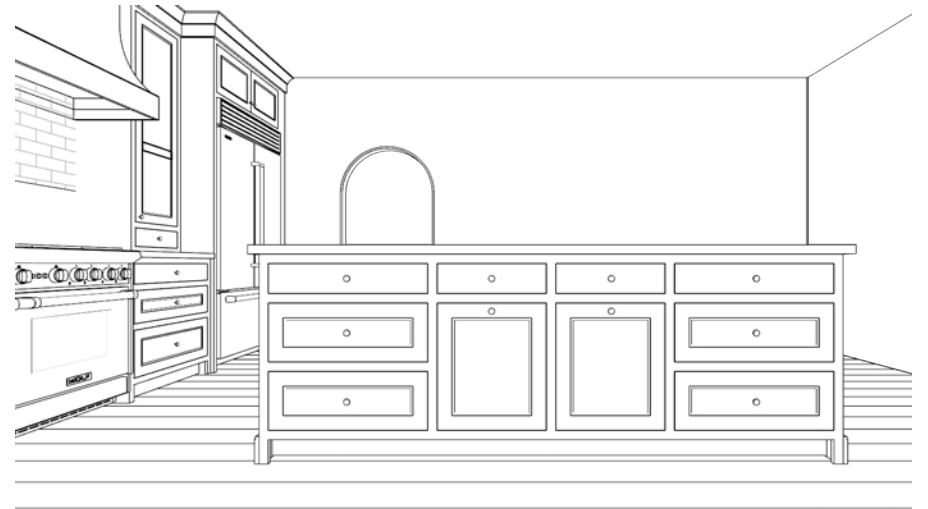
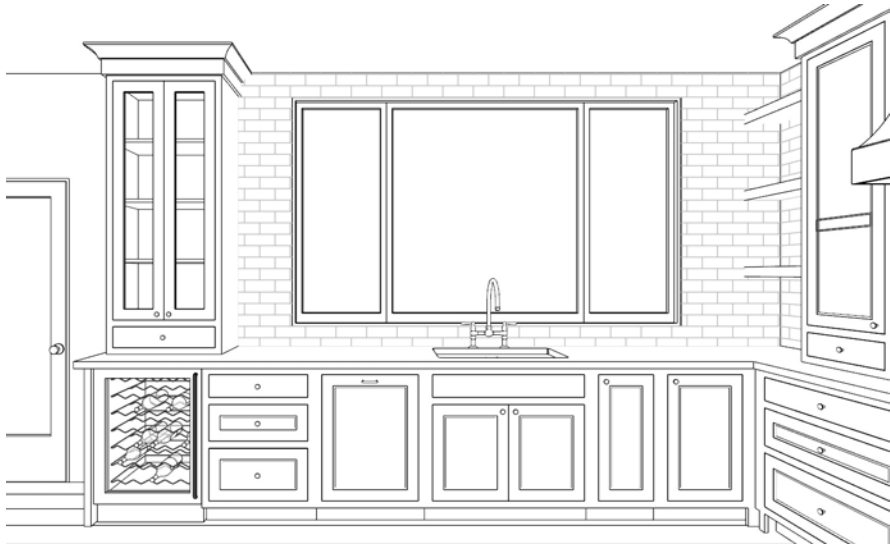


Schedule A (Kitchen perimeter): Flush Inset; Madison Door/Matching Drawer (top Slab); MDF; SW Waterloo					
	ITEM CODE	WIDTH	HEIGHT	DEPTH	ITEM DESCRIPTION
A1	CSW1D BD	27"	65 1/2"	15"	wall 1 drawer butt doors
A2	CSW1D	20"	65 1/2"	15"	wall 1 drawer single door
A3	E300-3030-6030	73 1/4"	31"	22 1/4"	E300-3030-6030
A4	CSW1D	20"	65 1/2"	15"	wall 1 drawer single door
A5	CSRTB BD	44 1/2"	101 1/2"	25"	refrigerator tall both butt doors
A6	CSEP	1 1/2"	34 1/2"	24"	end panel
A7	CSB3D				base three drawer
A8	Custom Frame/Door	24"	30 1/2"	3/4"	dishwasher panel - sized to specifications
A9	CSBS BD				base sink butt doors
A10	Custom Frame/Door	15"	30 1/2"	3/4"	ice maker panel - sized to specifications
A11	CSBFDBCR	36"	34 1/2"	24"	base full door blind corner right
A12	CSB3D	32 5/8"	34 1/2"	24"	base three drawer
A13	CSB3D	32 5/8"	34 1/2"	24"	base three drawer
A14					Crown 1524
A15					Slab Crown Backer
A16					Toe Kick Material

Schedule B (Island): Flush Inset; Madison Door/Matching Drawer (top Slab); WO; Nutmeg					
	ITEM CODE	WIDTH	HEIGHT	DEPTH	ITEM DESCRIPTION
B1	Floating Shelf (Qty 3)	25 1/4"	2 1/2"	10"	shelf
B2	Custom Frame	96"	30 1/2"	3/4"	custom island base cabinet with leg extensions
B3	CSBCO	72"	34 1/2"	23 1/4"	custom base cabinet
B4	CSBCO	24"	34 1/2"	14 1/4"	custom base cabinet
B6	CSB3DEH / CF	32 7/8"	34 1/2"	15"	base three drawer equal height
B7	CSBFD BD / CF	53 1/2"	34 1/2"	15"	base full door butt doors
B8	CSBIUCM / CF	26 7/8"	34 1/2"	24"	built-in under counter microwave
B9	Custom Frame/Door	14 1/4"	34 1/2"	3/4"	integrated base end panel with no left stile
B10	Custom Frame/Door	23 1/4"	34 1/2"	3/4"	integrated base end panel with no right stile
B11	Custom Frame/Door	15"	34 1/2"	3/4"	integrated base end panel
B12	Plywood	16"	34 1/2"	3/4"	integrated plywood panel
B13	Custom Frame/Door	26"	34 1/2"	3/4"	integrated base end panel with no left stile
B14					3 1/2" Townsend Square Leg
B15					Toe Kick Material
B16					Base 381





Thank you for your interest in our design services! We look forward to completing this project with you!

Step 1: Review your design and compile a list of questions to discuss with your Cabinet Coach.

Some things to do/consider as you review your layout:

- Measure your space again to ensure proper room dimensions are shown on the drawing.
- Double-check your measurements for ALL window and door openings. Be sure to account for the width of trim in your window/door measurements.
- Verify your appliances. Are they placed in the proper location? Refer to the appliance specifications to ensure each appliance will fit correctly within the cabinet. Your cabinet coach can help with this!
- Which cabinet sides will be visible and therefore require a finished end?
- Do you have uneven floors or ceilings? If so, be sure to account for those differences as you determine your cabinet heights.
- Are there room obstructions? (i.e. soffits, plumbing, vents, duct work, etc.) Be sure to note them on your drawing.

Step 2: After your questions have been answered by your Cabinet Coach, please submit a numbered list of changes for updating your design/quote.

Example list of revisions:

1. Change Cabinet #4 from a B18 to a B3D18
2. Change the wall cabinet height to 36"
3. Make Cabinet #12 a Trash Pull-Out
4. Please add a 30" pantry to the right of Cabinet #2
5. Add lightrail B11

IMPORTANT: Your first set of revisions are complimentary. Additional revisions will result in an automatic upgrade from a Basic Design to a Premium Design. The fee for this packet starts at \$199. Subsequent revisions will be invoiced at \$80/hour. Ask your Cabinet Coach for more details.

*Interested in speaking directly with a designer? We offer two design-consultation services: **1) 30 or 60-minute Design Consultation** (Rates are \$150 for 30-minutes or \$300 for 60-minutes) and **2) Pro Design** (Fees vary, but start at \$1000 minimum; \$2000 average) Ask your Cabinet Coach for more information about these design-consultation offerings.*

Disclaimer: This design is the result of information that you, the customer, have provided to Cabinet Joint for the purpose of visualizing your cabinet layout before placing an order. It is the sole responsibility of the customer to verify all room dimensions, cabinet sizes, and appliance openings before placing that order. Any color renderings that we provide are not meant to be an exact representation of the cabinet finish on your order. Cabinet Joint will not be responsible for any perceived discrepancies between the color shown in these renderings and the actual cabinet finish you received.