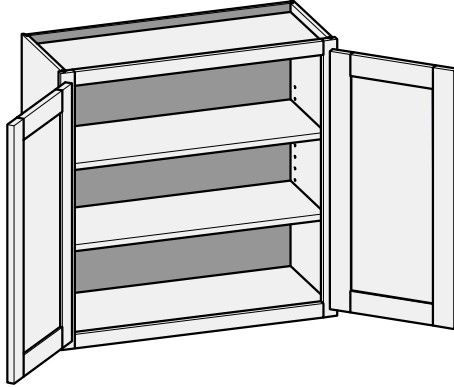


**W/CSW - Wall Cabinet**

Custom Size Ranges  
 Single Door Width: 9" – 24"  
 Butt Door Width: 24" – 36"  
 Height: 12" – 72"  
 Depth: 5-1/2" – 27"



- 12" – 18" high has no shelves.
- 18-1/16" – 24" high has one shelf.
- 24-1/16" – 36" high has two shelves.
- 36-1/16" – 48" high has three shelves.
- 48-1/16" – 60" high has four shelves.
- 60-1/16" – 72" high has five shelves.
- Specify single or butt doors on custom size cabinets 24" wide.

**Single Door Cabinet - 12-1/2" Deep**

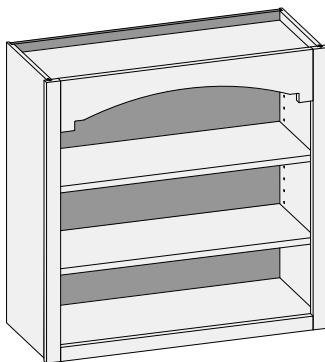
30" High	36" High	42" High
W0930	W0936	W0942
W1230	W1236	W1242
W1530	W1536	W1542
W1830	W1836	W1842
W2130	W2136	W2142
W2430	W2436	W2442

**Butt Door Cabinets - 12-1/2" Deep**

12" High	15" High	18" High	21" High	24" High	27" High	30" High	36" High	42" High
W2412BD	W2415BD	W2418BD	W2421BD	W2424BD	W2427BD	W2430BD	W2436BD	W2442BD
W2712BD	W2715BD	W2718BD	W2721BD	W2724BD	W2727BD	W2730BD	W2736BD	W2742BD
W3012BD	W3015BD	W3018BD	W3021BD	W3024BD	W3027BD	W3030BD	W3036BD	W3042BD
W3312BD	W3315BD	W3318BD	W3321BD	W3324BD	W3327BD	W3330BD	W3336BD	W3342BD
W3612BD	W3615BD	W3618BD	W3621BD	W3624BD	W3627BD	W3630BD	W3636BD	W3642BD

**Butt Door Cabinets - 24" Deep**

12" High	15" High	18" High	21" High	24" High	27" High
WD3012BD	WD3015BD	WD3018BD	WD3021BD	WD3024BD	WD3027BD
WD3312BD	WD3315BD	WD3318BD	WD3321BD	WD3324BD	WD3327BD
WD3612BD	WD3615BD	WD3618BD	WD3621BD	WD3624BD	WD3627BD

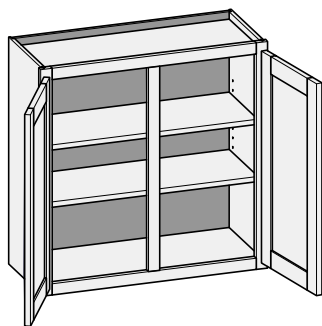
**CSWOU - Wall Open Unit**


Custom Size Ranges  
 Width: 15" – 48"  
 Height: 30" – 72"  
 Depth: 5-1/2" – 27"

- Available with valance designs on top rail (see pg. 12.6 for Valance Options). To order specify using CWS designations associated with the valance designs.
- Top rail is 5-1/2" for all valance designs.
- If no valance design is selected, top rail is 1-1/2" wide.
- Minimum width is 15".
- 18" – 24" high has one shelf.
- 24-1/16" – 36" high has two shelves.
- 36-1/16" – 48" high has three shelves.
- 48-1/16" – 59-15/16" high has four shelves.
- 60" – 72" high has five shelves.

**Wall Options Key:** EXP = Exposed End(s) FL = Flush End(s) FUE = Flush Unexposed End(s) PFD = Prep for False Door EXT = Extended Stile(s)  
 OS = Omit Shelving NSH = No Shelf Holes WS = Solid Wood Shelves MI = Matching Interior NB = Natural Finished Bottom

## W/CSWCS - Wall Cabinet w/Center Stile



Custom Size Ranges  
Width: 27" – 48"  
Height: 12" – 72"  
Depth: 5-1/2" – 27"

- 12" – 18" high has no shelves.
- 18-1/16" – 24" high has one shelf.
- 24-1/16" – 36" high has two shelves.
- 36-1/16" – 48" high has three shelves.
- 48-1/16" – 60" high has four shelves.
- 60-1/16" – 72" high has five shelves.

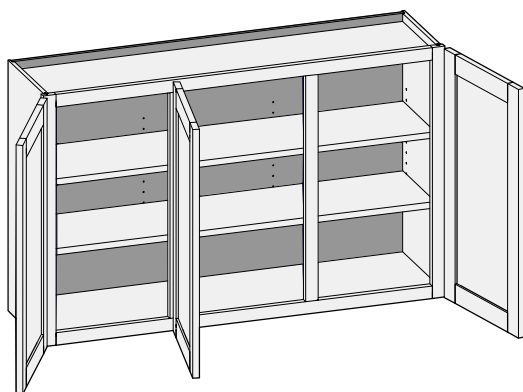
### 12 -1/2" Deep

12" High	15" High	18" High	21" High	24" High	27" High	30" High	36" High	42" High
W3012	W3015	W3018	W3021	W3024	W3027	W3030	W3036	W3042
W3312	W3315	W3318	W3321	W3324	W3327	W3330	W3336	W3342
W3612	W3615	W3618	W3621	W3624	W3627	W3630	W3636	W3642
W3912	W3915	W3918	W3921	W3924	W3927	W3930	W3936	W3942
W4212	W4215	W4218	W4221	W4224	W4227	W4230	W4236	W4242
W4812	W4815	W4818	W4821	W4824	W4827	W4830	W4836	W4842

### 24" Deep

12" High	15" High	18" High	21" High	24" High	27" High
WD3012	WD3015	WD3018	WD3021	WD3024	WD3027
WD3312	WD3315	WD3318	WD3321	WD3324	WD3327
WD3612	WD3615	WD3618	WD3621	WD3624	WD3627
WD3912	WD3915	WD3918	WD3921	WD3924	WD3927

## W/CSW2CS - Wall Cabinet w/Two Center Stiles



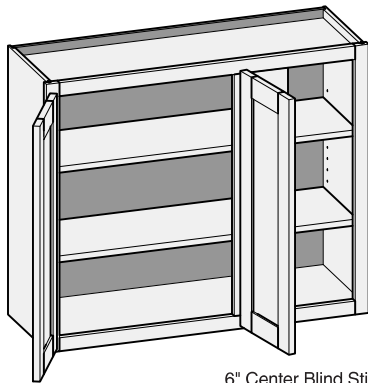
Custom Size Ranges  
Width: 48" – 72"  
Height: 12" – 72"  
Depth: 5-1/2" – 27"

- Additional shelf holes are provided in cabinet back to support wide shelves.
- Doors hinged on center stile require 1/2" overlay hinges for 1-1/4" or 1-3/8" overlay.
- 12" – 18" high has no shelves.
- 18-1/16" – 24" high has one shelf.
- 24-1/16" – 36" high has two shelves.
- 36-1/16" – 48" high has three shelves.
- 48-1/16" – 60" high has four shelves.
- 60-1/16" – 72" high has five shelves.
- Unavailable Options: WS.

30" High	36" High	42" High
W5130	W5136	W5142
W5430	W5436	W5442
W5730	W5736	W5742
W6030	W6036	W6042
W6330	W6336	W6342
W6630	W6636	W6642
W6930	W6936	W6942
W7230	W7236	W7242

Wall Options Key: EXP = Exposed End(s) FL = Flush End(s) FUE = Flush Unexposed End(s) PFD = Prep for False Door EXT = Extended Stile(s)  
OS = Omit Shelving NSH = No Shelf Holes WS = Solid Wood Shelves MI = Matching Interior NB = Natural Finished Bottom

## WBC/CSWBC - Wall Blind Corner



6" Center Blind Stile

Custom Size Ranges  
 Single Door Width: 27" – 48"  
 Butt Door Width: 36" – 48"  
 Height: 12" – 72"  
 Depth: 5-1/2" – 27"  
 Functional Opening: 12" – 38"

- Units are reversible (left shown).
- Specify functional opening width between 12" and 38".
- Minimum blind opening is 1".
- 12" – 18" high has no shelves.
- 18-1/16" – 24" high has one shelf.
- 24-1/16" – 36" high has two shelves.
- 36-1/16" – 48" high has three shelves.
- 48-1/16" – 60" high has four shelves.
- 60-1/16" – 72" high has five shelves.
- Specify single or butt doors when functional opening width is 24".

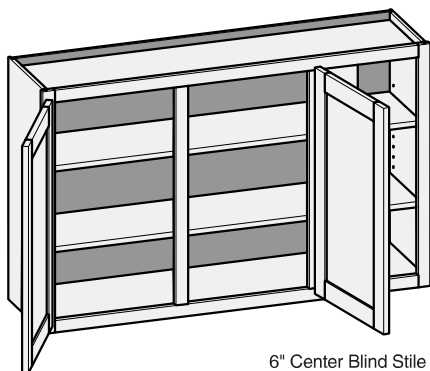
### Single Door Cabinets - 12-1/2" Deep

30" High	36" High	42" High
WBC2730	WBC2736	WBC2742
WBC3030	WBC3036	WBC3042
WBC3630	WBC3636	WBC3642

### Butt Door Cabinets - 12-1/2" Deep

30" High	36" High	42" High
WBC4230BD	WBC4236BD	WBC4242BD
WBC4830BD	WBC4836BD	WBC4842BD

## WBC/CSWBCCS - Wall Blind Corner w/Center Stile



6" Center Blind Stile

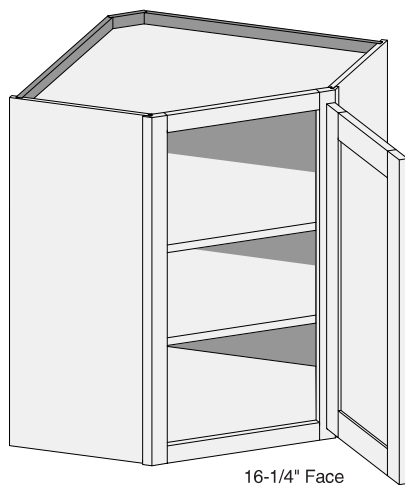
Custom Size Ranges  
 Width: 36" – 48"  
 Height: 12" – 72"  
 Depth: 5-1/2" – 27"

- Units are reversible (left shown).
- Designed to be used with adjacent 12-1/2" deep cabinet.
- 7-1/2" blind opening (fixed).
- 12" – 18" high has no shelves.
- 18-1/16" – 24" high has one shelf.
- 24-1/16" – 36" high has two shelves.
- 36-1/16" – 48" high has three shelves.
- 48-1/16" – 60" high has four shelves.
- 60-1/16" – 72" high has five shelves.

### 12-1/2" Deep

30" High	36" High	42" High
WBC4230	WBC4236	WBC4242
WBC4830	WBC4836	WBC4842

## WCS/CSWCSE - Wall Corner Single Entry



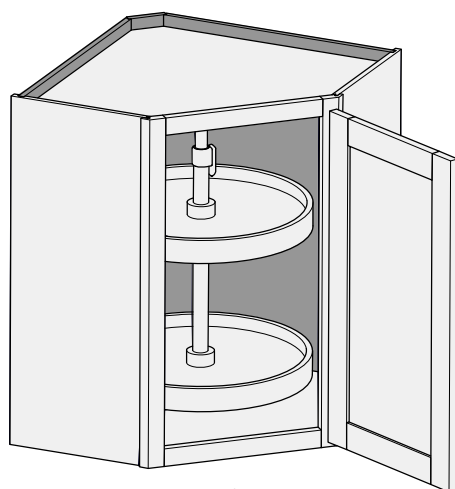
16-1/4" Face  
17-3/8" Frame  
Width

Custom Size Ranges  
Width: 24", 27"  
Height: 24" – 72"  
Depth: 24", 27"

- WCS24 units have 12-1/2" deep sides.
- WCS27 units have 15-1/2" deep sides.
- Shelf-mounted wood susan shelves are available. See Section 11 – Accessories.
- When ordered with 1-1/4" and 1-3/8" overlay applications (with or without hinges), cabinets will have their door sized as 1/2" overlay in width only to ensure adequate clearance.
- 24" – 36" high has two shelves.
- 36-1/16" – 48" high has three shelves.
- 48-1/16" – 60" high has four shelves.
- 60-1/16" – 72" high has five shelves.
- Unavailable Options: PFD and EXT.

30" High	36" High	42" High
WCS2430	WCS2436	WCS2442
WCS2730	WCS2736	WCS2742

## WCSLS – Wall Corner Single Entry with Lazy Susan

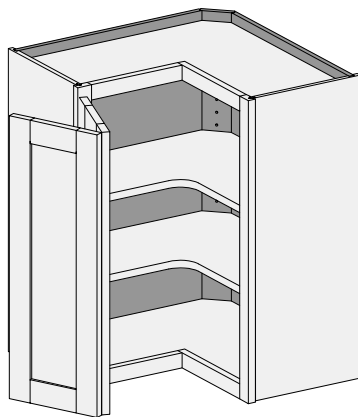


16-1/4" Face  
17-3/8" Frame  
Width

Custom Size Ranges  
Width: 24", 27"  
Height: 30"  
Depth: 24", 27"

- Cabinet top and bottom is pre-drilled to accept hub assembly. Location and installation are greatly simplified.
- Cabinet includes 18" diameter entry level plastic susan with two independently rotating shelves mounted on a center pole.
- White susan shelves feature a self-lubricating nylon bearing and tool-free height adjustment.
- Size customization is not available due to susan size constraints.
- WCSLS24 has 12-1/2" deep sides.
- WCSLS27 has 15-1/2" deep sides.
- When ordered with 1-1/4" and 1-3/8" overlay applications (with or without hinges), cabinets will have their door sized as 1/2" overlay in width only to ensure adequate clearance.
- Not available with inset applications.
- Unavailable Options: PFD and EXT.

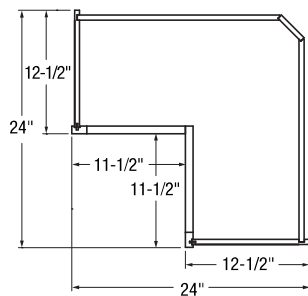
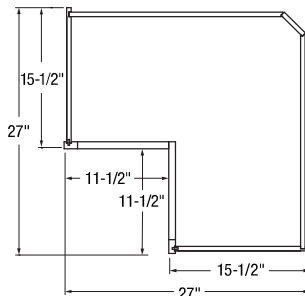
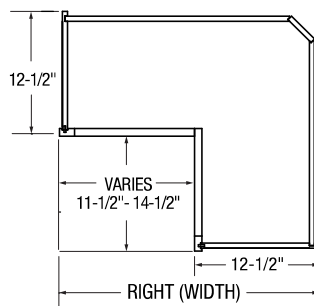
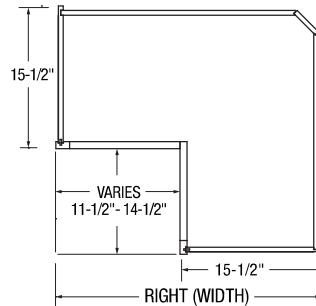
Cabinet Code
WCSLS2430
WCSLS2730

**WCP/CSWCP - Wall Corner Pie Cut**

**Custom Size Ranges**

24" Wide:  
 Width: 24" – 27"  
 Height: 24" – 72"  
 Depth: 24" – 27"

27" Wide:  
 Width: 27" – 30"  
 Height: 24" – 72"  
 Depth: 27" – 30"

- WCP24 unit has 12-1/2" deep sides.
- WCP27 unit has 15-1/2" deep sides.
- When hinges are ordered with 1-1/4" and 1-3/8" overlay applications, cabinets will have their doors sized as 1/2" overlay in width only to ensure proper clearance.
- If hinges are not specified, 1-1/4" and 1-3/8" overlay sizing rules apply. These overlays require adequate clearance for door functionality between corner and adjacent cabinets. Use filler or extended stiles accordingly.
- CSWCP available with custom size legs. Specify width (left dimension) and depth (right dimension). Side depth remains fixed; front frame pie cut opening adjusts as size changes.
- Wood shelf upgrade not available with CSWCP.
- Shelf-mounted wood susan shelves are available. See Section 11 – Accessories.
- Optional Soss hinges available.
- 24" – 36" high has two shelves.
- 36-1/16" – 48" high has three shelves.
- 48-1/16" – 60" high has four shelves.
- 60-1/16" – 72" high has five shelves.
- Unavailable Option: PFD.

**WCP24**

**WCP27**

**CSWCP24**

**CSWCP27**

**Custom Size Ranges**

	12-1/2" deep sides	15-1/2" deep sides
Width	24" – 27"	27" – 30"
Height	24" – 48"	24" – 48"
Depth	24" – 27"	27" – 30"

**30" High**

WCP2430  
 WCP2730

**36" High**

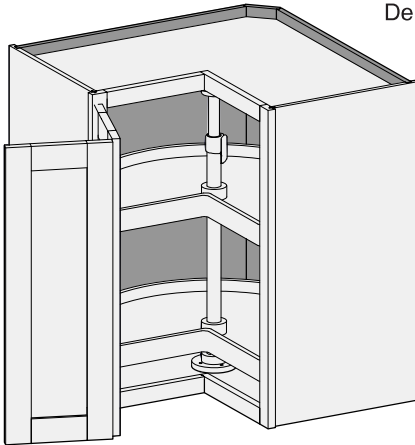
WCP2436  
 WCP2736

**42" High**

WCP2442  
 WCP2742

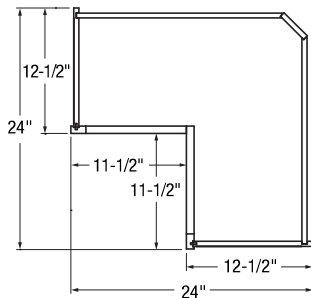
## WCPLS/CSWCPLS – Wall Corner Lazy Susan

Custom Size Ranges  
Width: 24", 27"  
Height: 30"  
Depth: 24", 27"

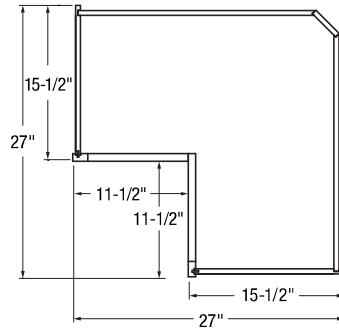


- Cabinet top and bottom is pre-drilled to accept hub assembly.
- Cabinet includes entry level plastic susan with two independently rotating kidney shelves mounted on a center pole.
- White susan shelves feature a self-lubricating nylon bearing and tool-free height adjustment.
- WCPLS24 has 12-1/2" deep sides and 18" diameter susan shelves.
- WCPLS27 has 15-1/2" deep sides and 24" diameter susan shelves.
- Height customization is not available due to susan unit size constraints.
- When hinges are ordered with 1-1/4" and 1-3/8" overlay applications, cabinets will have their door sized as 1/2" overlay in width only.
- If hinges are not specified, 1-1/4" and 1-3/8" overlay sizing rules apply. These overlays require adequate clearance for door functionality between corner and adjacent cabinets. Use filler or extended stiles accordingly.
- Not available with inset applications.
- Optional Soss hinges available.
- Unavailable Option: PFD.

**WCPLS2430**



**WCPLS2730**

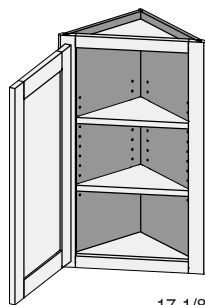


### Cabinet Code

WCPLS2430

WCPLS2730

## WAE/CSWAE - Wall Angle End



17-1/8" Face  
17-11/16" Frame Width

2-3/32" Stiles

Custom Size Ranges  
Width: 12-1/2"  
Height: 12" – 72"  
Depth: 12-1/2"

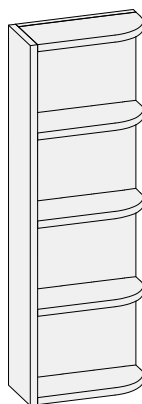
- Concealed inset hinges are not available.
- 12" – 18" high has no shelves.
- 18-1/16" – 24" high has one shelf.
- 24-1/16" – 36" high has two shelves.
- 36-1/16" – 48" high has three shelves.
- 48-1/16" – 60" high has four shelves.
- 60-1/16" – 72" high has five shelves.
- Unavailable Options: EXP, FL, FUE, PFD, EXT.

30" High	36" High	42" High
WAE1230	WAE1236	WAE1242

6

Advantage Wall Cabinets

## WOS/CSWOS - Wall Open Shelf

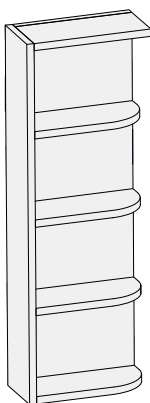


Custom Size Ranges  
Width: 6"  
Height: 12" – 48"  
Depth: 12-1/2" – 27"

- Standard as shown. No options available.
- Reversible.
- 3/4" matching specie plywood with dowel construction.
- Exposed edges are banded with matching specie veneer.
- Hard Maple plywood utilized for Hard and Soft Maple lines.
- 12" – 17-15/16" high has two shelves.
- 18" – 23-15/16" high has three shelves.
- 24" – 35-15/16" high has four shelves.
- 36" – 48" high has five shelves.
- Matching Interior (MI) Standard.

12-1/2" Deep		
30" High	36" High	42" High
WOS0630	WOS0636	WOS0642

## WOSST/CSWOSST - Wall Open Shelf Square Top



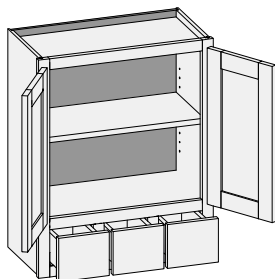
Custom Size Ranges  
Width: 6"  
Height: 12" – 48"  
Depth: 12-1/2" – 27"

- Standard as shown. No options available.
- 3/4" matching specie plywood with dowel construction.
- Exposed edges are banded with matching specie veneer.
- Hard Maple plywood utilized for Hard and Soft Maple lines.
- 12" – 17-15/16" high has two shelves.
- 18" – 23-15/16" high has three shelves.
- 24" – 35-15/16" high has four shelves.
- 36" – 48" high has five shelves.
- Matching Interior (MI) Standard.

12-1/2" Deep		
30" High	36" High	42" High
WOSST0630	WOSST0636	WOSST0642

**Wall Options Key:** EXP = Exposed End(s) FL = Flush End(s) FUE = Flush Unexposed End(s) PFD = Prep for False Door EXT = Extended Stile(s)  
 OS = Omit Shelving NSH = No Shelf Holes WS = Solid Wood Shelves MI = Matching Interior NB = Natural Finished Bottom

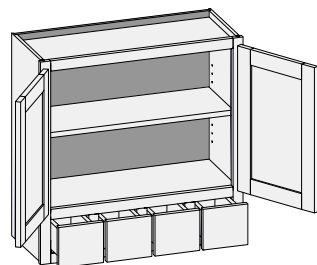
### CSWS3D - Wall Spice Three Drawer w/Butt Doors



Custom Size Ranges  
Width: 24" – 29-15/16"  
Height: 30" – 72"  
Depth: 5-1/2" – 27"

- No drawer slides.
- When height changes, upper opening height changes. Lower opening height fixed at 5".
- 30" – 35" high has one shelf.
- 35-1/16" – 42" high has two shelves.
- 42-1/16" – 48" high has three shelves.
- 48-1/16" – 60" high has four shelves.
- 60-1/16" – 72" high has five shelves.

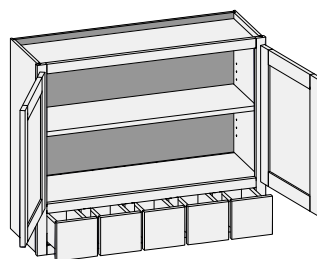
### CSWS4D - Wall Spice Four Drawer w/Butt Doors



Custom Size Ranges  
Width: 30" – 35-15/16"  
Height: 30" – 72"  
Depth: 5-1/2" – 27"

- No drawer slides.
- When height changes, upper opening height changes. Lower opening height fixed at 5".
- 30" – 35" high has one shelf.
- 35-1/16" – 42" high has two shelves.
- 42-1/16" – 48" high has three shelves.
- 48-1/16" – 60" high has four shelves.
- 60-1/16" – 72" high has five shelves.

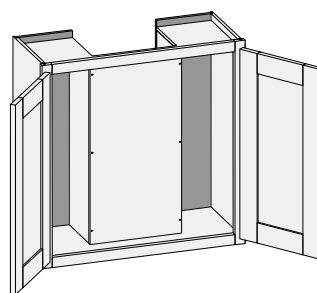
### CSWS5D - Wall Spice Five Drawer w/Butt Doors



Custom Size Ranges  
Width: 36"  
Height: 30" – 72"  
Depth: 5-1/2" – 27"

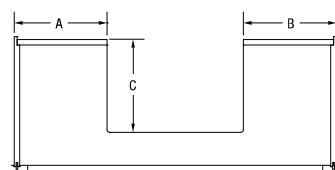
- No drawer slides.
- When height changes, upper opening height changes. Lower opening height fixed at 5".
- 30" – 35" high has one shelf.
- 35-1/16" – 42" high has two shelves.
- 42-1/16" – 48" high has three shelves.
- 48-1/16" – 60" high has four shelves.
- 60-1/16" – 72" high has five shelves.

### CSWRC3 – Wall w/ 3 Sided Recessed Back



Custom Size Ranges  
Width: 24" – 36"  
Height: 12" – 48"  
Depth: 12" – 27"

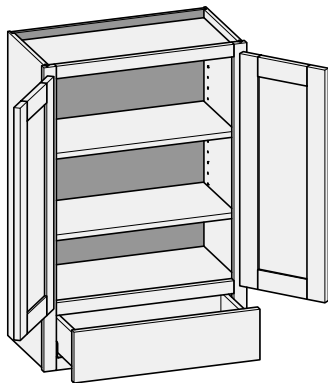
- Designed to accommodate and conceal ductwork, electric or plumbing supply lines.
- Front panel is removable for installation and access to supply lines.
- To customize recess size and location, specify A, B and C.
- Recess can be centered or offset from either side.
- Minimum dimensions for A, B and C: 2".
- Maximum dimensions for A and B: Cabinet width minus A + B equal to or greater than 2".
- Maximum dimension for C: Cabinet depth minus 2".
- No shelves.
- Specify single or butt doors on custom size cabinets 24" wide.
- Unavailable Options: PFD and MI.



WRC3 Top View

Wall Options Key: EXP = Exposed End(s) FL = Flush End(s) FUE = Flush Unexposed End(s) PFD = Prep for False Door EXT = Extended Stile(s)  
OS = Omit Shelving NSH = No Shelf Holes WS = Solid Wood Shelves MI = Matching Interior NB = Natural Finished Bottom



**W1D/CSW1D - Wall One Drawer**


Custom Size Ranges  
 Single Door Width: 12" – 24"  
 Butt Door Width: 24" – 36"  
 Height: 30" – 72"  
 Depth: 12", 12-1/2",  
 15", 18", 21", 24"

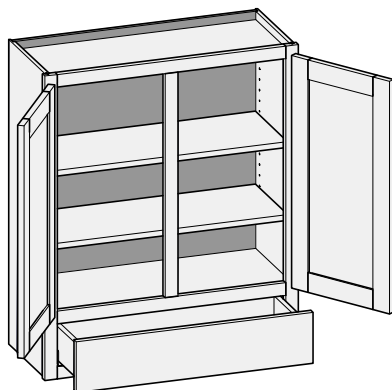
- When height changes, upper opening height changes. Lower opening height fixed at 5".
- 30" – 35" high has one shelf.
- 35-1/16" – 47" high has two shelves.
- 47-1/16" – 59" high has three shelves.
- 69-1/16" – 72" high has four shelves.
- Specify single or butt doors on custom size cabinets 24" wide.
- Unavailable Option: PFD.

**Single Door Cabinets – 12-1/2" Deep**

48" High	54" High	60" High
W1D1548	W1D1554	W1D1560
W1D1848	W1D1854	W1D1860
W1D2148	W1D2154	W1D2160
W1D2448	W1D2454	W1D2460

**Butt Door Cabinets – 12-1/2" Deep**

48" High	54" High	60" High
W1D2448BD	W1D2454BD	W1D2460BD
W1D2748BD	W1D2754BD	W1D2760BD
W1D3048BD	W1D3054BD	W1D3060BD
W1D3348BD	W1D3354BD	W1D3360BD
W1D3648BD	W1D3654BD	W1D3660BD

**W1D/CSW1DCS - Wall One Drawer w/Center Stile**


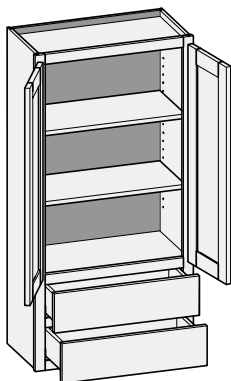
Custom Size Ranges  
 Width: 27" – 36"  
 Height: 30" – 72"  
 Depth: 12", 12-1/2",  
 15", 18", 21", 24"

- When height changes, upper opening height changes. Lower opening height fixed at 5".
- 30" – 35" high has one shelf.
- 35-1/16" – 47" high has two shelves.
- 47-1/16" – 59" high has three shelves.
- 59-1/16" – 72" high has four shelves.
- Unavailable Option: PFD.

48" High	54" High	60" High
W1D2748	W1D2754	W1D2760
W1D3048	W1D3054	W1D3060
W1D3348	W1D3354	W1D3360
W1D3648	W1D3654	W1D3660

**Wall Options Key:** EXP = Exposed End(s) FL = Flush End(s) FUE = Flush Unexposed End(s) PFD = Prep for False Door EXT = Extended Stile(s)  
 OS = Omit Shelving NSH = No Shelf Holes WS = Solid Wood Shelves MI = Matching Interior NB = Natural Finished Bottom

## W2D/CSW2D - Wall Two Drawer w/Butt Doors



Custom Size Ranges  
Width: 24" – 36"  
Height: 30" – 72"  
Depth: 12", 12-1/2",  
15", 18", 21", 24"

- When height changes, upper opening height changes. Lower opening heights fixed at 5".
- 30" – 41" high has one shelf.
- 41-1/16" – 47" high has two shelves.
- 47-1/16" – 59" high has three shelves.
- 59-1/16" – 72" high has four shelves.
- Specify single or butt doors on custom size cabinets 24" wide.
- Unavailable Option: PFD.

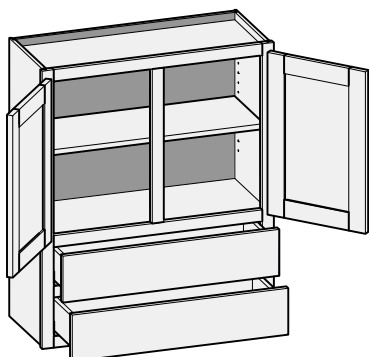
Single Door Cabinets – 12-1/2" Deep

48" High	54" High	60" High
W2D1548	W2D1554	W2D1560
W2D1848	W2D1854	W2D1860
W2D2148	W2D2154	W2D2160
W2D2448	W2D2454	W2D2460

Butt Door Cabinets – 12-1/2" Deep

48" High	54" High	60" High
W2D2448BD	W2D2454BD	W2D2460BD
W2D2748BD	W2D2754BD	W2D2760BD
W2D3048BD	W2D3054BD	W2D3060BD
W2D3348BD	W2D3354BD	W2D3360BD
W2D3648BD	W2D3654BD	W2D3660BD

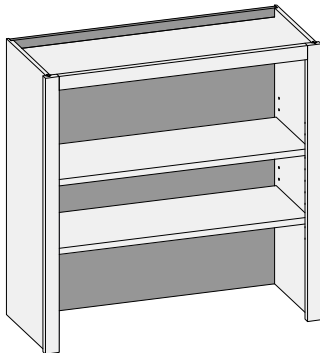
## W2D/CSW2DCS - Wall Two Drawer w/Center Stile



Custom Size Ranges  
Width: 27" – 36"  
Height: 30" – 72"  
Depth: 12", 12-1/2",  
15", 18", 21", 24"

- When cabinet height changes the upper opening changes. Lower opening heights fixed at 5".
- 30" – 41" high has one shelf.
- 41-1/16" – 47" high has two shelves.
- 47-1/16" – 59" high has three shelves.
- 59-1/16" – 72" high has four shelves.
- Unavailable Option: PFD.

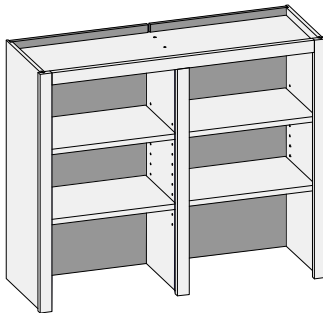
48" High	54" High	60" High
W2D2748	W2D2754	W2D2760
W2D3048	W2D3054	W2D3060
W2D3348	W2D3354	W2D3360
W2D3648	W2D3654	W2D3660

**WOBS/CSWOBS - Wall Open Bookshelf**


Custom Size Ranges  
 Width: 9" – 36"  
 Height: 12" – 96"  
 Depth: 5-1/2" – 27"

- Solid wood shelves not available with matching specie interior option.
- <24" has no shelves.
- 24-1/16" – 35" has one shelf.
- 35-1/16" – 47" high has two shelves.
- 47-1/16" – 59" high has three shelves.
- 59-1/16" – 72" high has four shelves.
- 72-1/16" – 84" high has five shelves.
- 84-1/16" – 96" high has six shelves.

12-1/2" Deep		
48" High	54" High	60" High
WOBS1548	WOBS1554	WOBS1560
WOBS1848	WOBS1854	WOBS1860
WOBS2148	WOBS2154	WOBS2160
WOBS2448	WOBS2454	WOBS2460
WOBS2748	WOBS2754	WOBS2760
WOBS3048	WOBS3054	WOBS3060
WOBS3348	WOBS3354	WOBS3360
WOBS3648	WOBS3654	WOBS3660

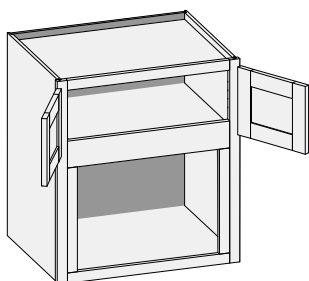
**CSWOBSCS – Wall Open Bookshelf w/Center Stile**


Custom Size Ranges  
 Width: 36" – 72"  
 Height: 12" – 96"  
 Depth: 5-1/2" – 27"

- Fixed vertical partition with independently adjustable shelves.
- Solid wood shelves not available with matching specie interior option.
- <24" has no shelves.
- 24-1/6" – 35" high has two shelves.
- 35-1/16" – 47" high has four shelves.
- 47-1/16" – 59" high has six shelves.
- 59-1/16" – 72" high has eight shelves.
- 72-1/16" – 84" high has ten shelves.
- 84-1/16" – 96" high has twelve shelves.

**Wall Options Key:** EXP = Exposed End(s) FL = Flush End(s) FUE = Flush Unexposed End(s) PFD = Prep for False Door EXT = Extended Stile(s)  
 OS = Omit Shelving NSH = No Shelf Holes WS = Solid Wood Shelves MI = Matching Interior NB = Natural Finished Bottom

## CSWMB - Wall Microwave Built-in w/Butt Doors

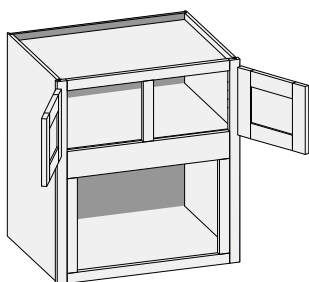


4" Middle Rail

Custom Size Ranges  
Width: 24" – 36"  
Height: 30" – 72"  
Depth: 18" – 27"

- Bottom opening height 14" on 30" – 35-15/16" height, 15-1/2" on all other heights. Trimmable to midrail, increase opening height by 2-1/2".
- Bottom opening width 6" less than cabinet width. Trimmable to 3".
- 30" – 42" high has no shelves.
- 42-1/16" – 54" high has one shelf.
- 54-1/16" – 66" high has two shelves.
- 66-1/16" – 72" high has three shelves.
- Unavailable option: WS.

## CSWMBCS - Wall Microwave Built-in w/Center Stile

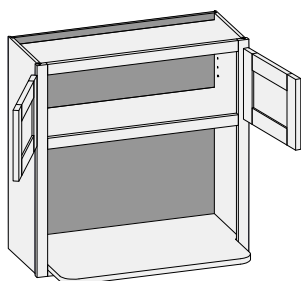


Middle Rail

Custom Size Ranges  
Width: 27" – 36"  
Height: 30" – 72"  
Depth: 18" – 27"

- Bottom opening height 14" on 30" – 35-15/16" height; 15-1/2" on all others. Trimmable to midrail, increase opening height to 2-1/2".
- Bottom opening width 6" less than cabinet width. Trimmable to 3" less than cabinet width.
- 30" – 42" high has no shelves.
- 42-1/5" – 54" high has one shelf.
- 54-1/16" – 66" high has two shelves.
- 66-1/16" – 72" high has three shelves.
- Unavailable option: WS.

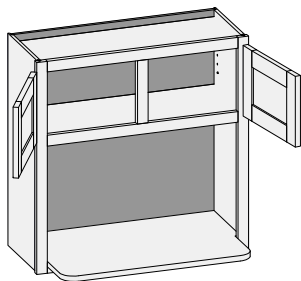
## CSWMWS - Wall Microwave with Shelf w/Butt Doors



Custom Size Ranges  
Width: 24" – 36"  
Height: 30" – 72"  
Depth: 5-1/2" – 27"

- 18" deep matching specie plywood microwave shelf.
- Soft Maple uses Hard Maple plywood shelf.
- When height changes, upper opening height changes. Lower opening height fixed at 16-1/2".
- Edge of lower shelf is plywood banded with matching specie veneer.
- 30" – 42" high has no shelves.
- 42-1/6" – 54" high has one shelf.
- 54-1/16" – 66" high has two shelves.
- 66-1/16" – 72" high has three shelves.
- Unavailable options: PFD and WS.

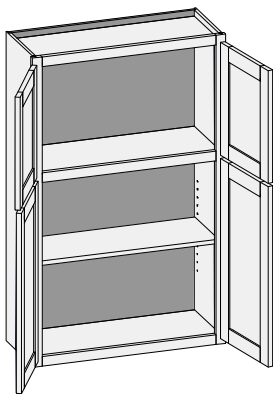
## CSWMWCS - Wall Microwave with Shelf w/Center Stile



Custom Size Ranges  
Width: 27" – 36"  
Height: 30" – 72"  
Depth: 5-1/2" – 27"

- 18" deep matching specie plywood microwave shelf.
- Soft Maple uses Hard Maple plywood shelf.
- When height changes, upper opening height changes. Lower opening height fixed at 16-1/2".
- Edge of lower shelf is plywood banded with matching specie veneer.
- 30" – 42" high no shelves.
- 42-1/16" – 54" high has one shelf.
- 54-1/16" – 66" high has two shelves.
- 66-1/16" – 72" high has three shelves.
- Unavailable options: PFD and WS.

Wall Options Key: EXP = Exposed End(s) FL = Flush End(s) FUE = Flush Unexposed End(s) PFD = Prep for False Door EXT = Extended Stile(s)  
OS = Omit Shelving NSH = No Shelf Holes WS = Solid Wood Shelves MI = Matching Interior NB = Natural Finished Bottom

**TTW/CSTTW - Two Tiered Wall**


Custom Size Ranges  
 Single Door Width: 9" – 24"  
 Butt Door Width: 24" – 36"  
 Height: 48" – 72"  
 Depth: 5-1/2" – 27"

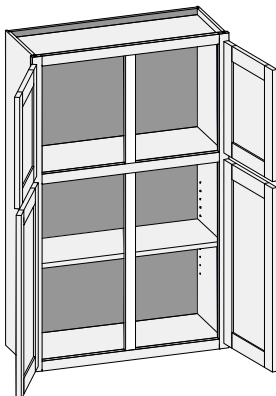
- When height changes, lower opening height changes.
  - ♦ Upper opening height fixed at 16-1/2" with inset, 1/4" and 1/2" overlay.
  - ♦ Upper opening height fixed at 16" with 1-1/4" and 1-3/8" overlay.
- Lower section designed to align with adjacent wall cabinets. Add 18" to adjacent cabinet to determine TTW cabinet height.
- 48" – 60" high has two shelves.
- 60-1/16" – 72" high has three shelves.
- Specify single or butt doors on custom size cabinets 24" wide.

**Single Door Cabinets – 12-1/2" Deep**
**48" High**

TTW1248	TTW2148
TTW1548	TTW2448
TTW1848	

**Butt Door Cabinets – 12-1/2" Deep**
**48" High**

TTW2448BD	TTW3348BD
TTW2748BD	TTW3648BD
TTW3048BD	

**TTW/CSTTWCS - Two Tiered Wall w/Center Stile**


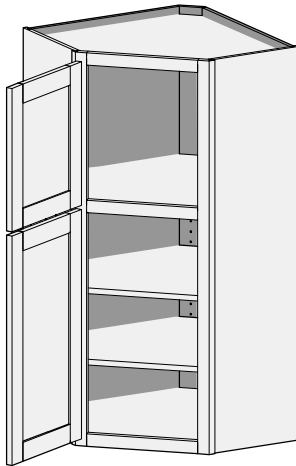
Custom Size Ranges  
 Width: 27" – 36"  
 Height: 48" – 72"  
 Depth: 5-1/2" – 27"

- When height changes, lower opening height changes.
  - ♦ Upper opening height fixed at 16-1/2" with inset, 1/4" and 1/2" overlay.
  - ♦ Upper opening height fixed at 16" with 1-1/4" and 1-3/8" overlay.
- Lower section designed to align with adjacent wall cabinets. Add 18" to adjacent cabinet to determine TTW cabinet height.
- 48" – 60" high has two shelves.
- 60-1/16" – 72" high has three shelves.

**12-1/2" Deep**
**48" High**

TTW2748	TTW3948
TTW3048	TTW4248
TTW3348	TTW4548
TTW3648	TTW4848

## TTWCSE/CSTTWCSE - Two Tiered Wall Corner Single Entry



16-1/4" Face  
17-3/8" Frame  
Width

Custom Size Ranges  
Width: 24", 27"  
Height: 48" – 72"  
Depth: 24", 27"

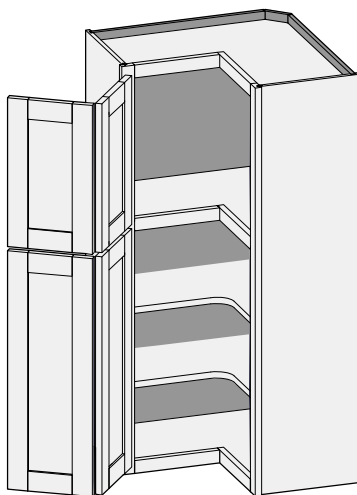
### 48" High

TTWCSE2448

TTWCSE2748

- When height changes, lower opening height changes.
  - ♦ Upper opening height fixed at 16-1/2" with inset, 1/4" and 1/2" overlay.
  - ♦ Upper opening height fixed at 16" with 1-1/4" and 1-3/8" overlay.
- TTWCSE24 units have 12-1/2" deep sides.
- TTWCSE27 units have 15-1/2" deep sides.
- Susan option is not available.
- When ordered in 1-1/4" and 1-3/8" overlay applications (with or without hinges), cabinets will have their doors sized as 1/2" overlay in width only to ensure adequate clearance.
- Lower section designed to align with adjacent wall cabinets. Add 18" to adjacent cabinet to determine TTW cabinet height.
- 48" – 60" high has two shelves.
- 60-1/16" – 72" high has three shelves.
- Unavailable options: EXT and PFD.

## TTWCP/CSTTWCP - Two Tiered Wall Corner Pie Cut



Custom Size Ranges  
Width: 24", 27"  
Height: 48" – 72"  
Depth: 24", 27"

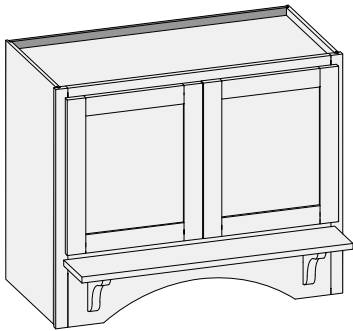
### 48" High

TTWCP2448

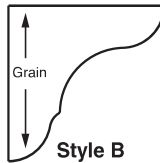
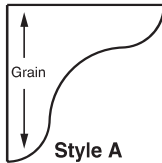
TTWCP2748

- When height changes, lower opening height changes.
  - ♦ Upper opening height fixed at 16-1/2" with inset, 1/4" and 1/2" overlay.
  - ♦ Upper opening height fixed at 16" with 1-1/4" and 1-3/8" overlay.
- TTWCP24 units have 12-1/2" deep sides.
- TTWCP27 units have 15-1/2" deep sides.
- Susan option is not available.
- When hinges are ordered in 1-1/4" and 1-3/8" overlay applications, cabinets will have their doors sized as 1/2" overlay in width only.
- If hinges are not specified, 1-1/4" and 1-3/8" overlay sizing rules apply. These overlays require adequate clearance for door functionality between corner and adjacent cabinets. Use filler or extended stiles accordingly.
- Lower section designed to align with adjacent wall cabinets. Add 18" to adjacent cabinet to determine TTW cabinet height.
- 48" – 60" high has two shelves.
- 60-1/16" – 72" high has three shelves.

### CSRH - Range Hood w/Butt Doors

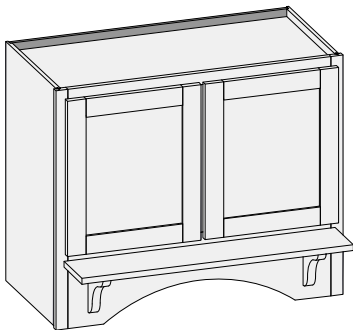


Custom Size Ranges  
 Width: 30" – 36"  
 Height: 24" – 48"  
 Depth: 18" – 21"

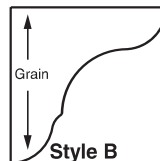
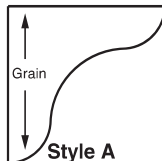


- Operable doors allow access to ventilation unit.
- Ventilators available through Stanisci Design. Phone Number: 248-572-6880.
- Roman Arch bottom rail standard - no options.
- Available with two bracket designs: Style A or B.
- Brackets are 1" thick, 6" high and 6" deep.
- Solid mantle shelf is 3/4" thick and 6-1/4" deep. Specify desired edge profile.
- Mantle shelf kit options (specify one):
  - Kit A - 2 Style A brackets and wood shelf
  - Kit B - 2 Style B brackets and wood shelf
  - Mantle shelf only
  - Style A only (pair)
  - Style B only (pair)
- Mantles and brackets not available on 24" – 29-15/16" high.

### CSRHCS - Range Hood w/Center Stile

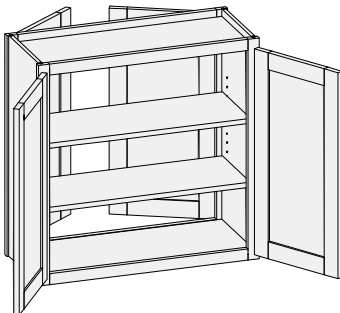


Custom Size Ranges  
 Width: 36" – 48"  
 Height: 24" – 48"  
 Depth: 18" – 21"



- Operable doors allow access to ventilation unit.
- Ventilators available through Stanisci Design. Phone Number: 248-572-6880.
- Roman Arch bottom rail standard - no options.
- Available with two bracket designs: Style A or B.
- Brackets are 1" thick, 6" high and 6" deep.
- Solid mantle shelf is 3/4" thick and 6-1/4" deep. Specify desired edge profile.
- Mantle shelf kit options (specify one):
  - Kit A - 2 Style A brackets and wood shelf
  - Kit B - 2 Style B brackets and wood shelf
  - Mantle shelf only
  - Style A only (pair)
  - Style B only (pair)
- Mantles and brackets not available on 24" – 29-15/16" high.

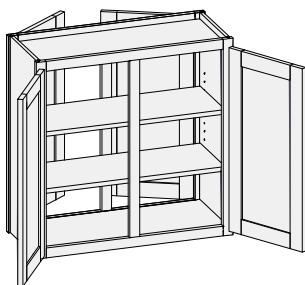
### CSWDE - Wall Double Entry w/Butt Doors



Custom Size Ranges  
 Single Door Width: 9" – 24"  
 Butt Door Width: 24" – 36"  
 Height: 12" – 72"  
 Depth: 12" – 27"

- 12" – 18" high has no shelves.
- 18-1/16" – 24" high has one shelf.
- 24-1/16" – 36" high has two shelves.
- 36-1/16" – 48" high has three shelves.
- 48-1/16" – 60" high has four shelves.
- 60-1/16" – 72" high has five shelves.
- Specify single or butt doors on custom size cabinets 24" wide.
- Unavailable options: PFD and WS.

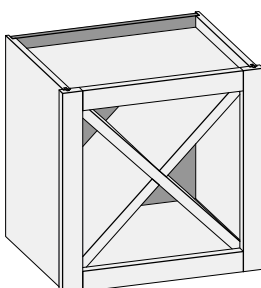
## WDE/CSWDECS - Wall Double Entry w/Center Stile



Custom Size Ranges  
Width: 27" – 48"  
Height: 12" – 72"  
Depth: 12" – 27"

- 12" – 18" high has no shelves.
- 18-1/16" – 24" high has one shelf.
- 24-1/16" – 36" high has two shelves.
- 36-1/16" – 48" high has three shelves.
- 48-1/16" – 60" high has four shelves.
- 60-1/16" – 72" high has five shelves.
- Unavailable options: PFD and WS.

## WXC/CSWXC - Wall X Cube Cabinet

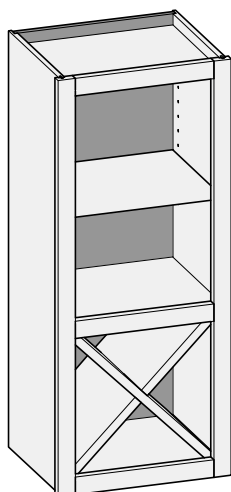


Custom Size Ranges  
Width: 12", 15", 18"  
Height: 12", 15", 18"  
Depth: 5-1/2" – 15-1/2"

- "X" insert constructed from 3/4" matching specie plywood.
- When ordering custom size cabinets, width and height must be equal.
- Top and bottom rails extend into the opening 1/8" to conceal ends of "X" insert after installation.

12-1/2" Deep		
12" High	15" High	18" High
WXC1212	WXC1515	WXC1818

## W1X/CSW1X - Wall One Door X Cube Cabinet



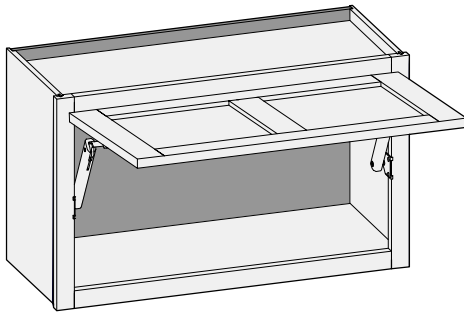
Custom Size Ranges  
Width: 12", 15", 18"  
Height: 30" – 72"  
Depth: 5-1/2" – 15-1/2"

- When height changes, upper section increases.
- Lower section height is equal to the cabinet width to maintain "X" insert sizing.
- "X" insert constructed from 3/4" matching specie plywood.
- Top and bottom rails in lower section extend into the opening 1/8" to conceal ends of "X" insert after installation.
- See BOM app on Customer Business Portal for shelf quantity.

30" High	33" High	36" High	42" High	45" High	48" High	51" High	54" High	57" High	60" High
W1X1230	W1X1233	W1X1236	W1X1242	W1X1245	W1X1248	W1X1251	W1X1254	W1X1257	W1X1260
W1X1530	W1X1533	W1X1536	W1X1542	W1X1545	W1X1548	W1X1551	W1X1554	W1X1557	W1X1560
W1X1830	W1X1833	W1X1836	W1X1842	W1X1845	W1X1848	W1X1851	W1X1854	W1X1857	W1X1860

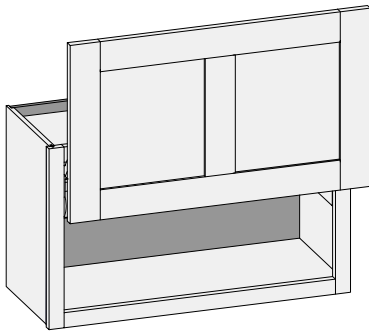
Wall Options Key: EXP = Exposed End(s) FL = Flush End(s) FUE = Flush Unexposed End(s) PFD = Prep for False Door EXT = Extended Stile(s)  
OS = Omit Shelving NSH = No Shelf Holes WS = Solid Wood Shelves MI = Matching Interior NB = Natural Finished Bottom



**CSWHKXS - Wall w/HK-XS Lift System**


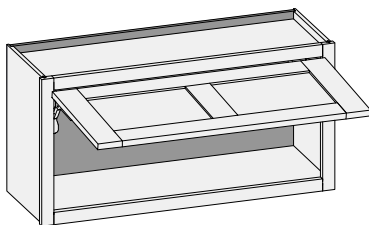
Custom Size Ranges  
 Width: 15" – 42"  
 Height: 12" – 24"  
 Depth: 6-1/2" – 27"

- Preconfigured units include Blum HK-XS Series lift system hardware and Blum COMPACT hinges.
- Door weight and design determine the strength and quantity of lift mechanisms provided.
- Cabinet width 15" – 24" are single panel door designs. 24-1/16" – 42" are two panels side by side door designs. Upcharges for 2 panel door apply.
- Rabbeted edge profiles and inset/prefit options are not available.
- 12" – 18" high has no shelves.
- 18-1/16" – 24" high has one shelf.

**CSWHL - Wall w/ AVENTOS HL top Lift System**


Custom Size Ranges  
 Width: 15" – 42"  
 Height: 12" – 33"  
 Depth: 12" – 27"  
 Door Height: 11-3/4" – 22-3/4"

- Preconfigured units include Blum AVENTOS HL top series lift system hardware.
- Door weight and design determine the lift kit provided.
- Door minimum and maximum height cannot be exceeded.
- Cabinet may not be valid if system calculated door weight exceeds minimum or maximum value.
- Cabinet width 15" – 24" are single panel door designs. 24-1/16" – 42" are two panels side by side door designs. Upcharges for 2 panel door apply.
- 12" – 18" high has no shelves.
- 18-1/16" – 23" high has one shelf.

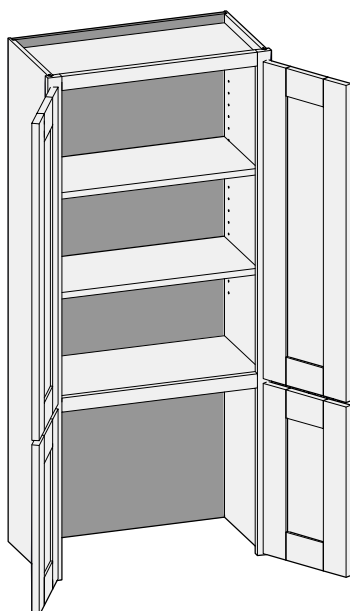
**CSWHK - Wall w/ AVENTOS HK top Lift System**


Custom Size Ranges  
 Width: 12" – 42"  
 Height: 8" – 24"  
 Depth: 10" – 27"

- Preconfigured units include Blum AVENTOS HL top series lift system hardware.
- Door weight and design determine the lift kit provided.
- Door minimum and maximum height cannot be exceeded.
- Cabinet may not be valid if system calculated door weight exceeds minimum or maximum value.
- Cabinet width 15" – 24" are single panel door designs. 24-1/16" – 42" are two panels side by side door designs. Upcharges for 2 panel door apply.
- 10" – 18" high has no shelves.
- 18-1/16" – 23" high has one shelf.

**Wall Options Key:** EXP = Exposed End(s) FL = Flush End(s) FUE = Flush Unexposed End(s) PFD = Prep for False Door EXT = Extended Stile(s)  
 OS = Omit Shelving NSH = No Shelf Holes WS = Solid Wood Shelves MI = Matching Interior NB = Natural Finished Bottom

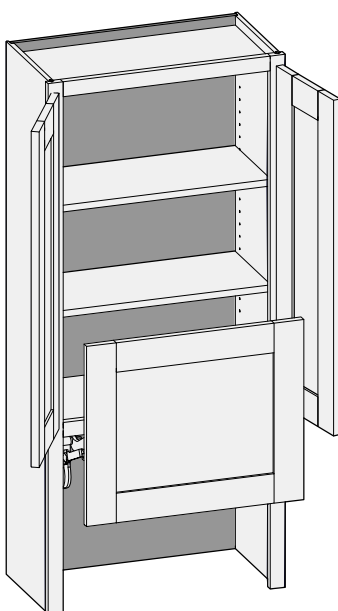
## CSWAC - Custom Size Wall Appliance Cabinet



Custom Size Ranges  
 Single Door Width: 12" – 24"  
 Butt Door Width: 24" – 36"  
 Height: 48" – 96"  
 Depth: 5-1/2" – 30"  
 Top Cab Height - 6" - 90"

- When ordering CSWAC specify the desired top cabinet height. On 1-1/4" & 1-3/8" overlay applications, CWS will adjust the front frame midrail location to ensure doors align with adjacent wall cabinet doors.
- Be sure to account for the countertop thickness when specifying overall cabinet height to ensure doors align properly.
- When ordering loose parts for this cabinet, use the BOM and specify the desired overlay to ensure the correct parts are ordered.
- Specify single or butt doors on custom size cabinets 24" wide.
- Shelf quantity is calculated for each opening height.
- Height <18" high has no shelves.
- Height 18" – 24" high has one shelf.
- Height 24-1/16" - 36" high has two shelves.
- Height 36-1/16" – 48" high has three shelves.
- Height 48-1/16" – 60" high has four shelves.
- Height 60-1/16" – 72" high has five shelves.
- Height 72-1/16" – 84" high has six shelves.
- Height >84" high has seven shelves.

## CSWACHL - Wall Appliance Cabinet w/ AVENTOS HL top Lift System

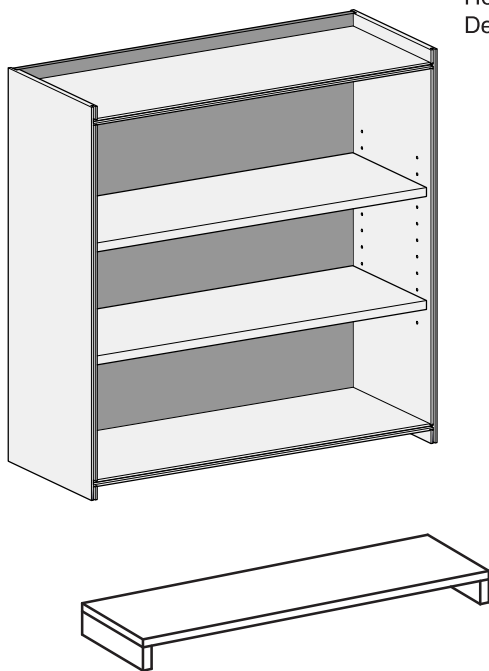


Custom Size Ranges  
 Single Door Width: 12" – 24"  
 Butt Door Width: 24" – 36"  
 Height: 48" – 96"  
 Depth: 5-1/2" – 30"  
 Top Cab Height - 6" - 90"

- When ordering CSWAC specify the desired top cabinet height. On 1-1/4" & 1-3/8" overlay applications, CWS will adjust the front frame midrail location to ensure doors align with adjacent wall cabinet doors.
- Be sure to account for the countertop thickness when specifying overall cabinet height to ensure doors align properly.
- When ordering loose parts for this cabinet, use the BOM and specify the desired overlay to ensure the correct parts are ordered.
- Specify single or butt doors on custom size cabinets 24" wide.
- Shelf quantity is calculated for each opening height.
- Height <18" high has no shelves.
- Height 18" – 24" high has one shelf.
- Height 24-1/16" - 36" high has two shelves.
- Height 36-1/16" – 48" high has three shelves.
- Height 48-1/16" – 60" high has four shelves.
- Height 60-1/16" – 72" high has five shelves.
- Height 72-1/16" – 84" high has six shelves.
- Height >84" high has seven shelves.

**CSWCO - Wall Case Only**

Custom Size Ranges  
 Width: 9" – 48"  
 Height: 12" – 120"  
 Depth: 5-1/2" – 30"



Loose fixed floor kits

- Customizable cabinet case for custom Wall and Tall applications.
- No front frame included – case only. Order custom size front frame and doors.
- Sides are machined with shelf holes.
- Loose fixed floor kits are sized to fit between sides. Plywood cleats included to mount floors as needed behind front frame openings. Floors include pre-inserted splines.
- Matching specie interior is not available over 96" high. White Birch UV topcoated material will be used.
- Custom quantities of fixed floor kits are available. Specify the quantity per cabinet.
- 12" – 18" high has no shelves.
- 18-1/16" – 24" high has one shelf.
- 24-1/16" – 36" high has two shelves.
- 36-1/16" – 48" high has three shelves.
- 48-1/16" – 60" high has four shelves.
- 60-1/16" – 72" high has five shelves.
- 72-1/16" – 84" high has six shelves.
- 84-1/16" – 96" high has seven shelves.
- 96-1/16" – 108" high has eight shelves.
- 108-1/16" – 120" high has nine shelves.
- Use Conestoga's online ordering system, Con-Nex or contact Customer Service for pricing of Case Only.