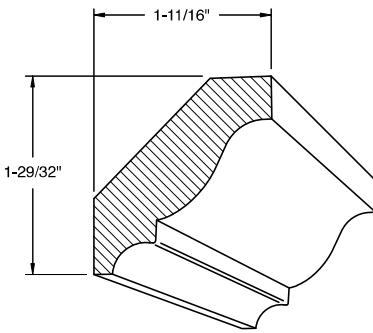
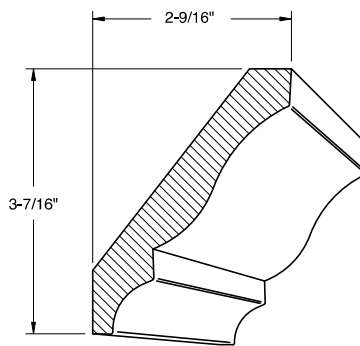


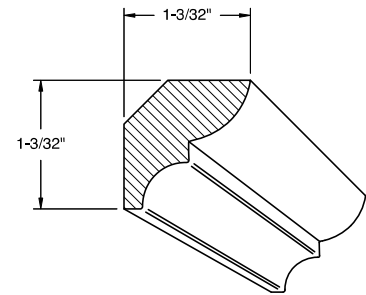
Crown Mouldings



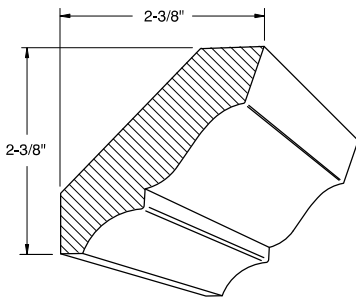
Crown 6



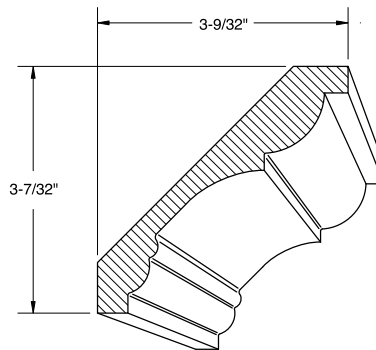
Crown 24



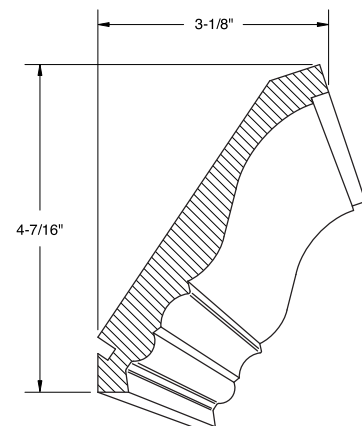
Crown 33



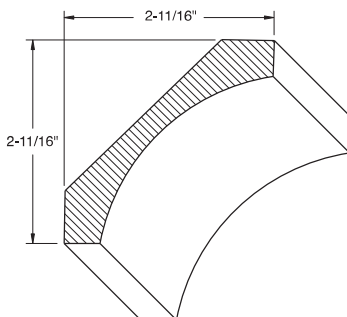
Crown 619



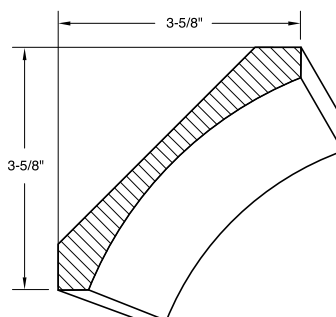
Crown 1238



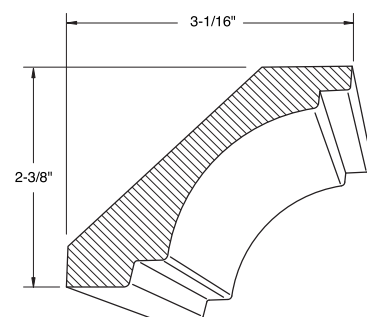
Crown 1550*



Large Cove 1524



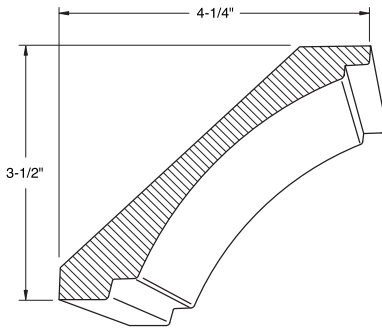
Large Cove 2618



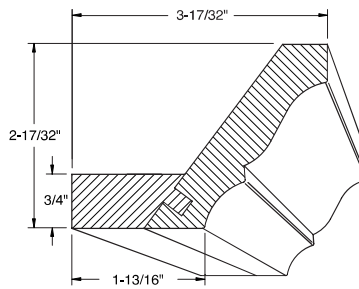
Crown 2324

* Crown moulding 1550 will accommodate Mounting Plate 384.
Note: Drawings not to scale.

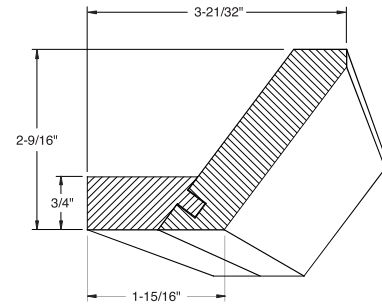
Crown Mouldings (continued)



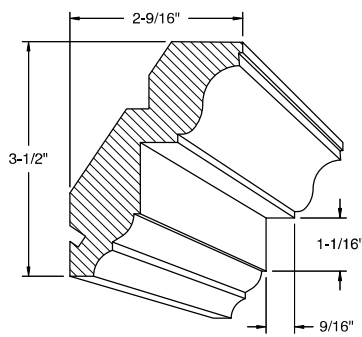
Crown 2325



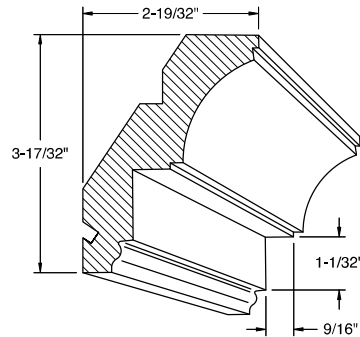
**Crown 801*
w/mounting plate**



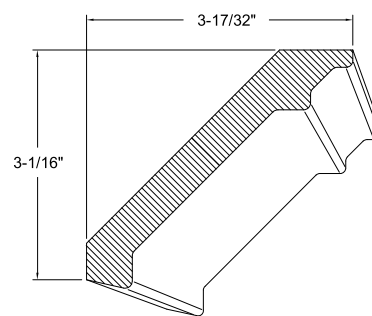
**Shaker Crown 1126*
w/mounting plate**



Crown 342**



Crown 343**



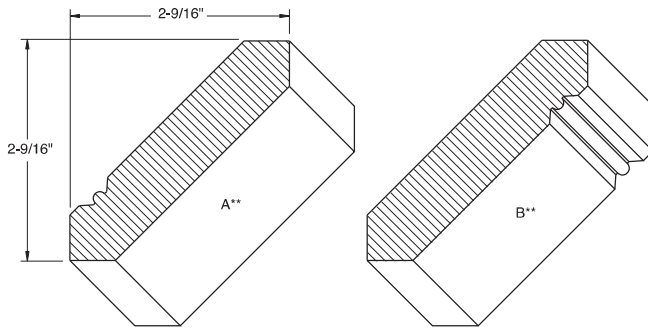
Crown 2777

* Crown 801 and Shaker Crown 1126 will be manufactured with a Paint Grade Hard Maple mounting plate, additional species available through Special Designs.

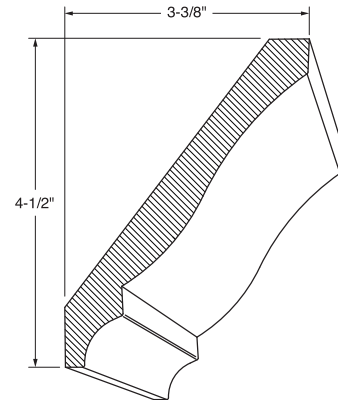
** Crown mouldings 342 and 343 will accommodate mounting plate 384 and 3/4" Rope, 7/8" Dentil and 1" Egg & Dart.

Note: Drawings not to scale.

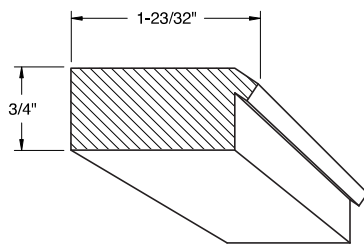
Crown Mouldings (continued)



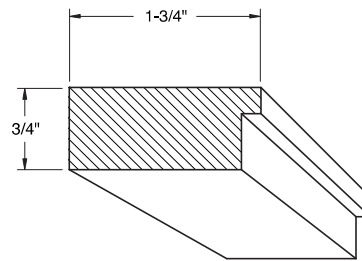
Reverse Shaker Crown 1529 †



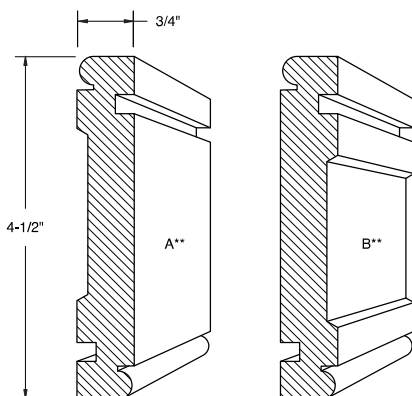
Crown 2584



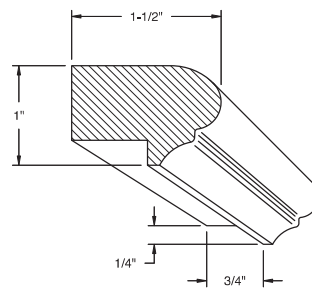
Crown Mounting Plate 384



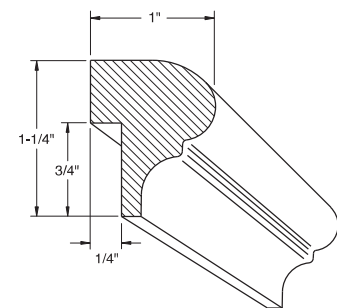
Frieze Mounting Plate 470



Reversible Frieze 345**



Light Rail B11



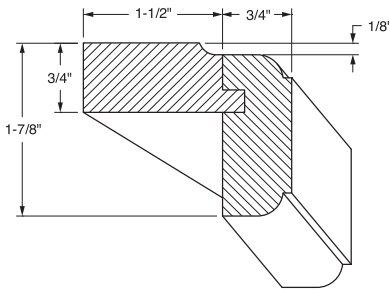
Light Rail 361

* Reversible Frieze 345 will accommodate Mounting Plate 470.

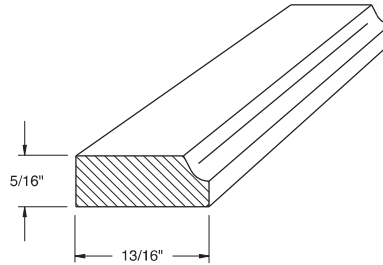
† When ordering dual side profile product, specify "Face side A" or "Face side B". When ordering prefinished product, specify "Finish side A" or "Finish side B".

Note: Drawings not to scale.

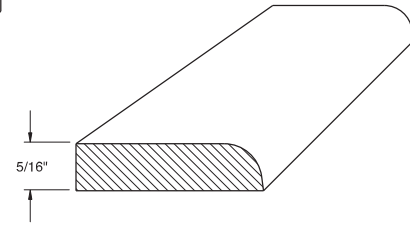
Trim and Accent Mouldings



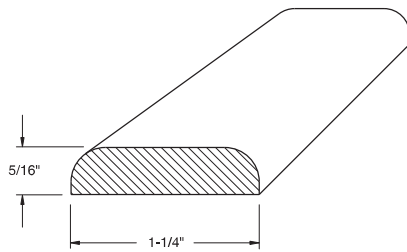
Light Rail 2380*
w/mounting plate



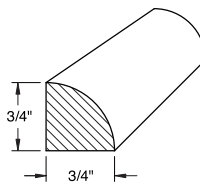
Scribe 1809



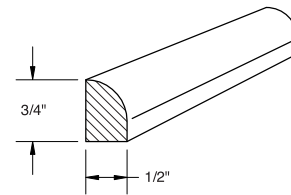
Scribe 14 (1-1/4\" wide)
Scribe 2316 (5/8\" wide)
Scribe 2317 (4\" wide)



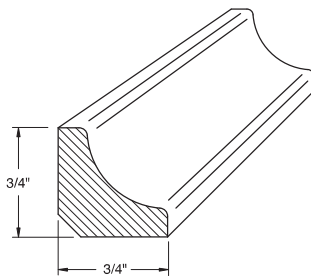
Batten 13



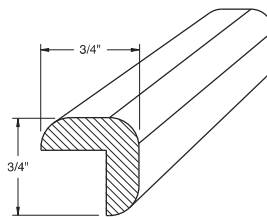
Quarter Round 1329



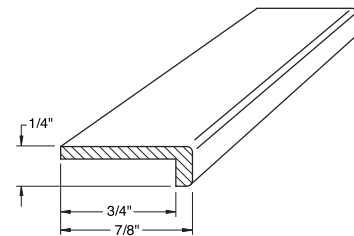
Shoe Moulding 583



Inside Corner Cove 11



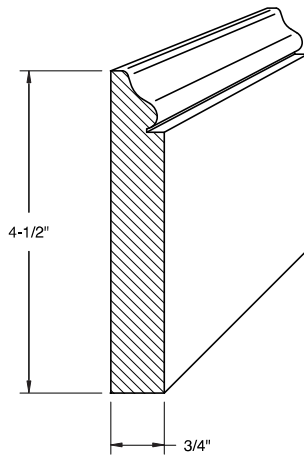
Outside Corner 12



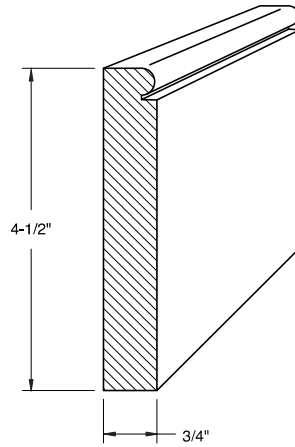
Refacer's Moulding 2322

* Light Rail 2380 is manufactured with matching specie mounting plate. Option to choose edge profile to be applied to top and bottom.
All published edge profiles available except B, C, FP, L-034, L-253, L-304 and L-686.
Note: Drawings not to scale.

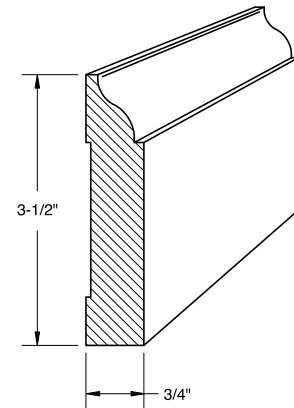
Trim and Accent Mouldings (continued)



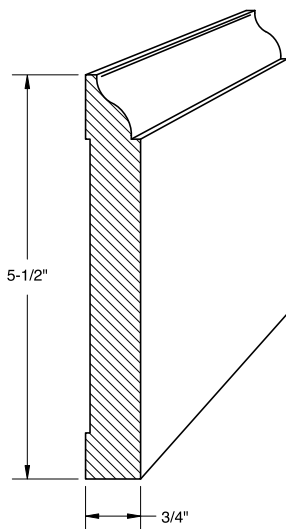
Colonial Base 10



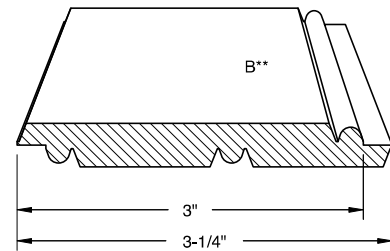
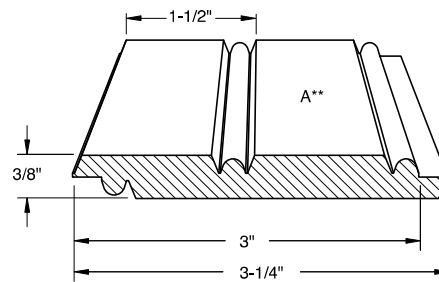
Beaded Base 381



Base Moulding 897



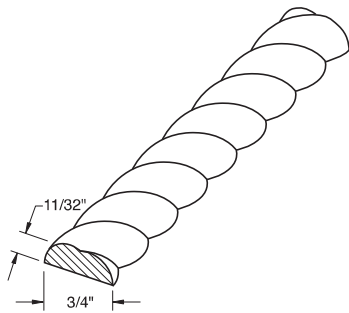
Base Moulding 898



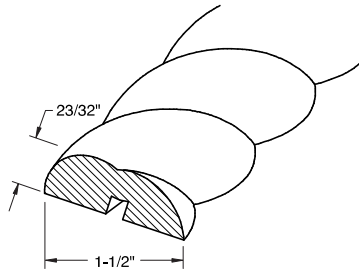
Beaded Panel B09*

* When ordering dual side profile product, specify "Face side A" or "Face side B". When ordering prefinished product, specify "Finish side A" or "Finish side B."
Note: Drawings not to scale.

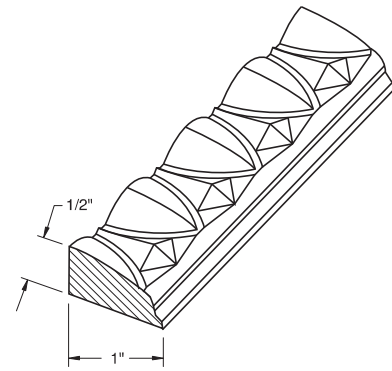
Trim and Accent Mouldings (continued)



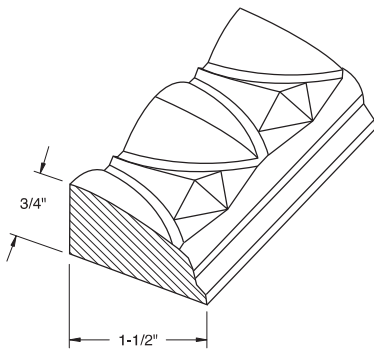
3/4" Rope



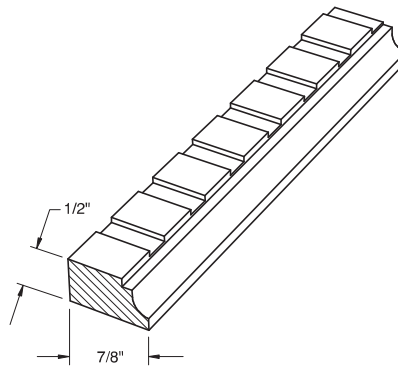
1-1/2" Rope



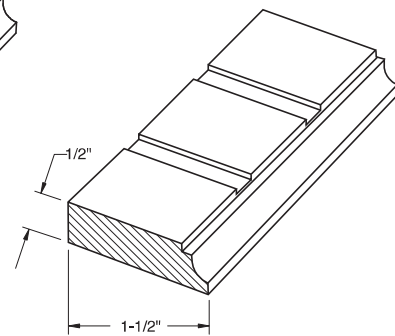
1" Egg & Dart



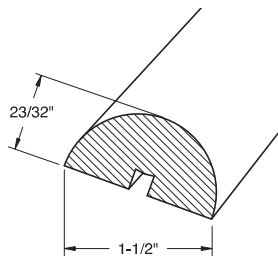
1-1/2" Egg & Dart



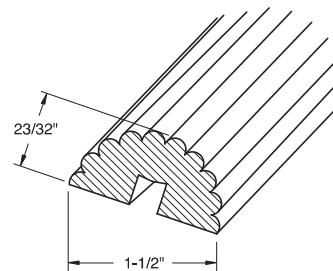
7/8" Dentil



1-1/2" Dentil



1-1/2" Plain



1-1/2" Reeded

Note: Drawings not to scale.

Custom Products | Summer 2025

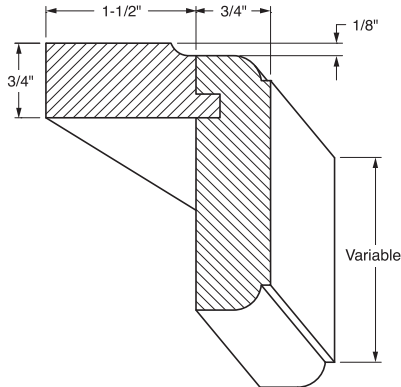
9.11

Trim and Accent Mouldings (continued)

Variable Width Light Rail #2578 Moulding

A variation of the #2380 Light Rail, the #2578 Variable Width Light Rail combines a matching specie mounting plate and the flexibility of a variable front height ranging from 1-1/2" to 5-1/2". Besides a light rail application, this moulding profile could be used as crown or fascia.

- Option to order both long edges profiled to match the doors' outside edge profile, or choose two different profiles.
- All published edge profiles available except B, C, FP, L-034, L-253, L-304, and L-686.

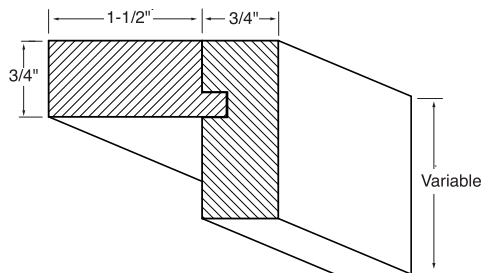


#2578 Variable Width Light Rail Moulding*				
Species	1.50"-2.5"	2.501"-3.5"	3.501"-4.5"	4.501"-5.5"
Alder				
Bamboo				
Birch, Red				
Birch, White				
Cherry				
Hickory				
Maple, Hard				
Maple, Soft				
Oak, Red				
Oak, White				
P. G. Hard Maple				
Pine, Clear				
Walnut				

Variable Width Filler #2470 Moulding

The #2470 Variable Width Filler combines a matching specie mounting plate and the flexibility of a variable front height ranging from 1-1/2" to 6". This moulding profile can be used vertically at the side of a cabinet or horizontally as crown or fascia.

- All published edge profiles available except B, C, FP, L-034, L-253, L-304 and L-686.



#2470 Variable Width Filler Moulding*				
Species	1.50"-2.5"	2.501"-3.5"	3.501"-4.5"	4.501"-6"
Alder				
Bamboo				
Birch, Red				
Birch, White				
Cherry				
Hickory				
Maple, Hard				
Maple, Soft				
Oak, Red				
Oak, White				
P. G. Hard Maple				
Pine, Clear				
Walnut				

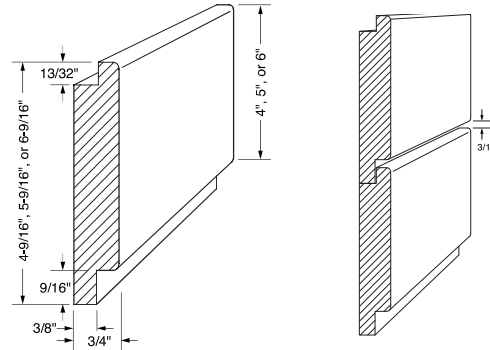
* Many carriers have instituted oversize package surcharges. 8' mouldings are subject to these surcharges. These surcharges do not apply if delivered on a Conestoga truck.

Specialty Mouldings

Shiplap #2580 Moulding

The 8' Shiplap moulding program provides a variety of moulding widths in 12 species, allowing designers to achieve a wide variety of looks from farmhouse to modern.

- Mouldings are profiled to automatically leave a 3/16" gap between the face of adjacent sticks during installation, creating the signature Shiplap appearance.



#2580 Shiplap Moulding*							
Species	4-9/16" width (4" face)	5-9/16" width (5" face)	6-9/16" width (6" face)	Species	4-9/16" width (4" face)	5-9/16" width (5" face)	6-9/16" width (6" face)
Alder				Maple, Soft			
Birch, Red				Oak, Red			
Birch, White				Oak, White			
Cherry				P.G. Hard Maple			
Hickory				Pine, Clear			
Maple, Hard				Walnut			

1/4" Solid Refacer's Program

- Moulding #2073 is solid 1/4" thick and designed to be applied over the face frames of existing cabinetry in field refacing applications.
- Available in 1/16" width increments from 1" to 6" wide x 96" long.
- Variable width refacer's moulding is available in Choice grade material. Sizes shown in the table below are for 1/4" thick "surfaced four sides" (S4S) square stock, molded and sanded.
- Available finished or unfinished. If finish option is chosen, moulding will be finished on face and two long edges only.

Ordering and Sizing Specifications

- Moulding is categorized and priced by width. Moulding width refers to the smallest whole-inch dimension of the refacing segment required. If the moulding is 1-1/4" wide, the appropriate pricing will be located in the 2" column. This rule is applicable to all sizes.
- Moulding wider than 5-1/16" may have one glue joint running the entire length.

#2073 1/4" Solid Refacing Moulding*						
Species	1" width	2" width	3" width	4" width	5" width	6" width
Alder						
Bamboo						
Birch, Red						
Birch, White						
Cherry						
Hickory						
Maple, Hard						
Maple, Soft						
Oak, Red						
Oak, White						
P.G. Hard Maple						
Pine, Clear						
Walnut						

* Many carriers have instituted oversize package surcharges. 8' mouldings are subject to these surcharges. These surcharges do not apply if delivered on a Conestoga truck.

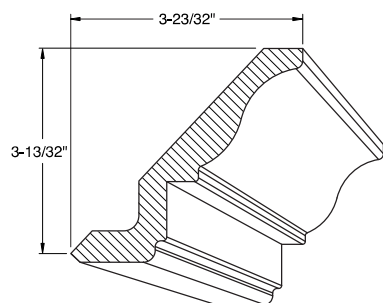
8 Foot Non-Standard Moulding Pricing and Availability (All pricing per 8 ft. piece)

Design and Profile	Size	Alder	Bamboo	Birch, Red	Birch, White	Cherry	Hickory	Maple, Hard	Maple, Soft	Oak, Red	Oak, White	PG Hard Maple	Pine, Clear	Walnut
Crown B10	4-15/16"		NA	NA										
Cove Crown 120	3-1/4"		NA	NA										
Crown 344	4-3/8"		NA	NA										
Crown 859	5-1/2"		NA	NA										
Crown 1017	4-1/4"		NA	NA										
Crown 1557	3-13/16"		NA											
Crown 1621	6-1/2"	NA	NA	NA	NA		NA		NA		NA		NA	NA
Crown 1622	6-1/2"	NA	NA	NA	NA		NA		NA		NA		NA	NA
Crown 1623	6-1/2"	NA	NA	NA	NA		NA		NA		NA		NA	NA
Crown 2057	5-9/16"		NA	NA										
Crown 2310	4-1/4"		NA	NA										
Shaker Crown 2516	4-3/16"		NA	NA										
Light Rail 1448	2-1/4"													
Light Rail 1619 w/mounting plate	2-5/8"		NA											
Colonial Casing 21	2-1/4"													
Case Moulding 466	3-1/4"													
Base Cap 860	1-1/2"		NA											
Inside Corner 474	3/4"													
135° Outside Corner 1319	1-15/16"													
135° Outside Corner 1995	1-9/16"													
Outside Corner 2788	1"		NA	NA										
Beaded Trim 1439	2"		NA	NA										
Inset Parting Bead 2302	1"	NA	NA	NA	NA		NA		NA		NA		NA	NA

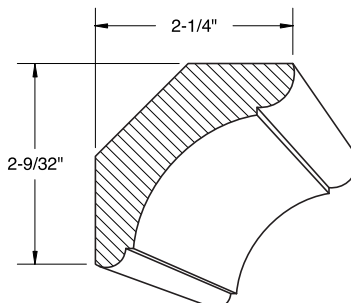
- All non-standard moulding profiles will incur a net setup charge when less than 100 linear feet of any specie is ordered.
- Size is nominal. Actual 8 foot length is between 94" and 97".
- All mouldings can be ordered finished "Face Only" or finished "Face and Back".
- See Finishing Section for pricing details.
- Many carriers have instituted oversize package surcharges. 8' mouldings are subject to these surcharges. These surcharges do not apply if delivered on a Conestoga truck.
- A moulding cut-down option is available.

Key		Non-standard item 10 day lead-time.
	NA	Not available

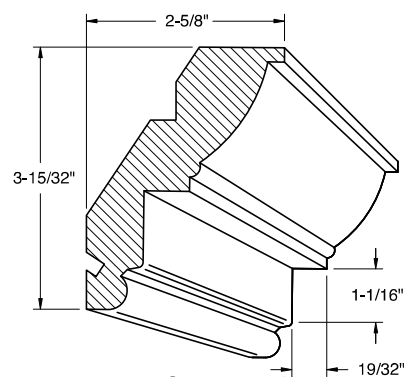
Non-Standard Mouldings



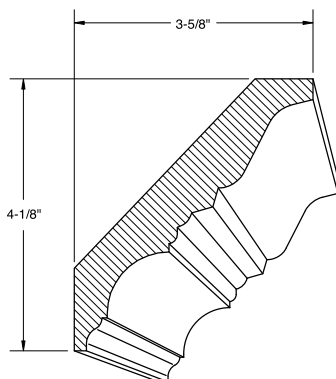
Crown B10*



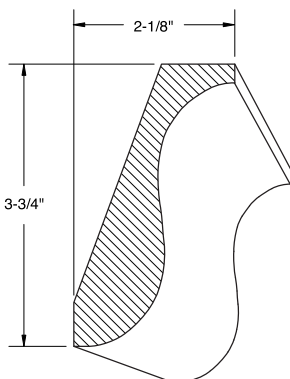
Cove Crown 120



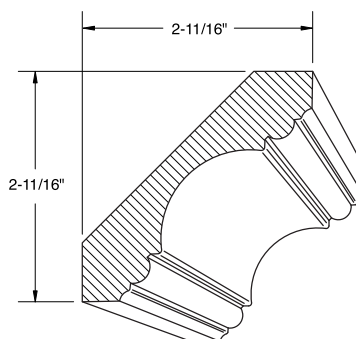
Crown 344**



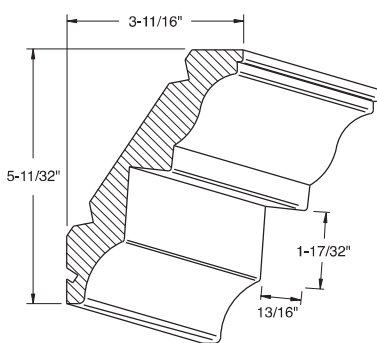
Crown 859



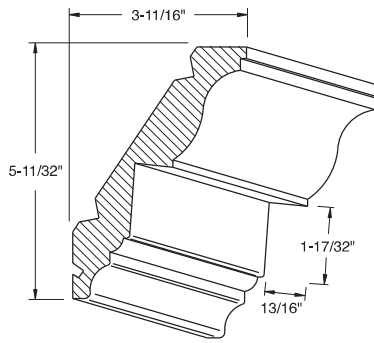
Crown 1017



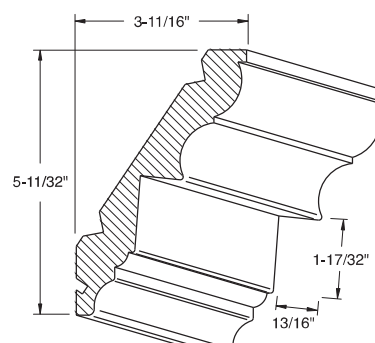
Crown 1557



Crown 1621***



Crown 1622***



Crown 1623***

* Crown B10 will accommodate 3/4" Rope and 7/8" Dentil.

** Crown moulding 344 will accommodate mounting plate 384 and 3/4" Rope, 7/8" Dentil and 1" Egg & Dart.

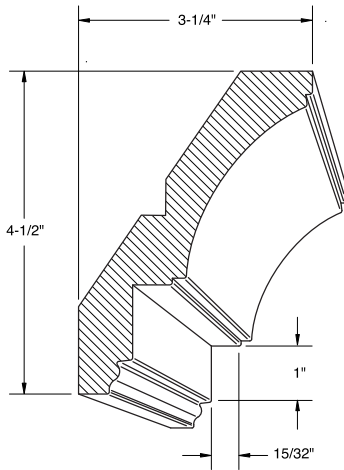
*** Crown mouldings 1621, 1622, 1623 will accommodate Mounting Plate 384 and 1-1/2" Rope, Dentil and Egg & Dart.

All profiles are subject to a setup charge for orders less than 100 linear feet. See pricing page for details.

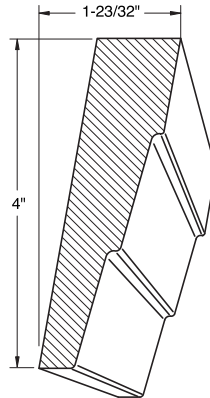
Note: Drawings not to scale.

Many carriers have instituted oversize package surcharges. 8' mouldings are subject to these surcharges. These surcharges do not apply if delivered on a Conestoga truck.

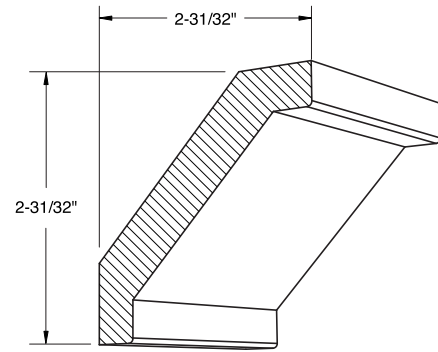
Non-Standard Mouldings (continued)



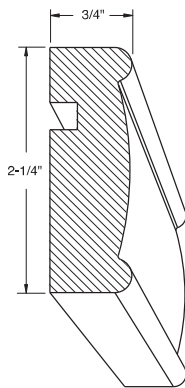
Crown 2057*



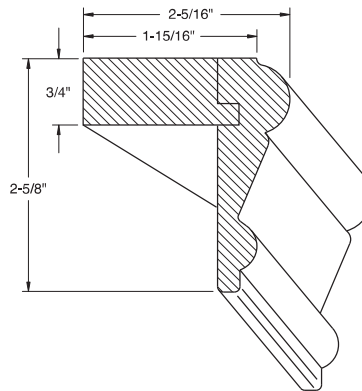
Crown 2310



Shaker Crown 2516



Light Rail 1448**



Light Rail 1619*
w/mounting plate**

* Crown 2057 will accommodate 3/4" Rope, 7/8" Dentil and 1" Egg & Dart.

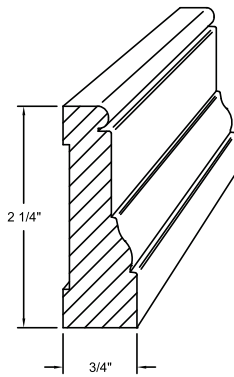
** Light Rail 1448 will accommodate mounting plate 470.

*** Light Rail 1619 will be manufactured with a Paint Grade Hard Maple mounting plate, additional species available through Special Designs. All profiles are subject to a setup charge for orders less than 100 linear feet. See pricing page for details.

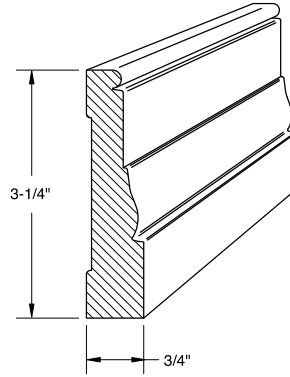
Note: Drawings not to scale.

Many carriers have instituted oversize package surcharges. 8' mouldings are subject to these surcharges. These surcharges do not apply if delivered on a Conestoga truck.

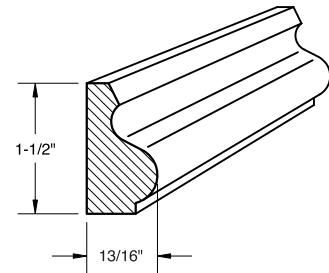
Non-Standard Mouldings (continued)



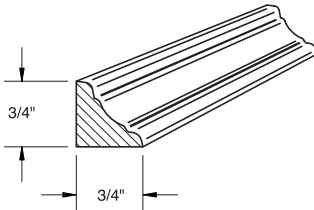
Colonial Casing 21



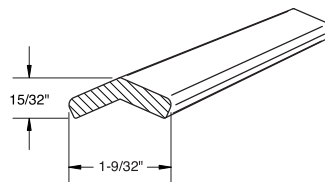
Case Moulding 466



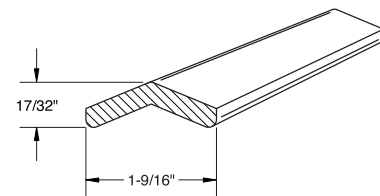
Base Cap 860



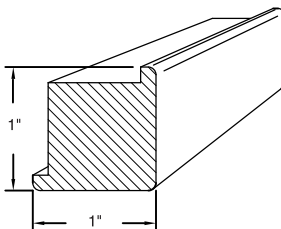
Inside Corner 474



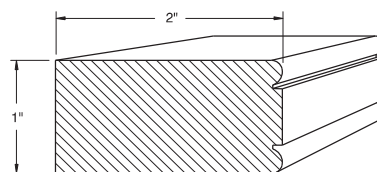
**135° Outside
Corner 1319**



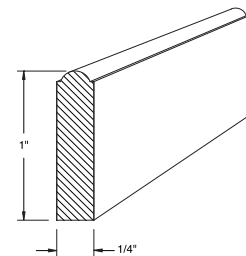
**135° Outside
Corner 1995**



Outside Corner 2788



Beaded Trim 1439



Parting Bead 2302

All profiles are subject to a setup charge for orders less than 100 linear feet. See pricing page for details.

Note: Drawings not to scale.

Many carriers have instituted oversize package surcharges. 8' mouldings are subject to these surcharges. These surcharges do not apply if delivered on a Conestoga truck.

Moulding Assembly Options

Conestoga's pre-assembled moulding options provide a cost effective alternative to installing mounting cleats and decorative accessory mouldings. By eliminating the need to assemble mouldings in your shop, you can increase throughput and focus your skilled labor on more profitable tasks. Assembled mouldings also finish more attractively, providing additional area for glaze hang up, accentuating the entire profile of decorative accessory mouldings.

Mounting Plate Installation Option

- The Mounting Plate Installation Option allows mounting plates to be pre-applied to select crown and light rail mouldings. For assembled mouldings over 8 feet in length, mounting plate will consist of two lengths cut to size.
- Eligible profiles include all published standard and non-standard crowns, 345 Reversible Frieze and 1448 Light Rail.
- Pricing is calculated by adding the cost of both eight foot moulding lengths plus additional charge for the Mounting Plate Installation option.
- Mounting Plate will consist of Paint Grade Hard Maple unless matching specie is otherwise requested.
- To order, designate "Mounting Plate Installation" next to each piece of moulding to be pre-assembled.
- Finishing Option is available for pre-assembled mouldings. See the Finishing Program Section for pricing and finish availability.

Decorative Moulding Assembly Option

- The Decorative Moulding Assembly Option allows customers to order select crown mouldings with accessory mouldings pre-assembled.
- 342, 343, 344 and 2057 Crown mouldings can be combined with the 7/8" Dentil, 1" Egg & Dart and 3/4" Rope mouldings.
- 1621, 1622 and 1623 Crown mouldings can be combined with the 1-1/2" Dentil, Egg & Dart and Rope mouldings.
- Pricing is calculated by adding the cost of both eight foot moulding lengths plus an additional charge for the Decorative Moulding Assembly Option.
- To order designate "Decorative Moulding Assembly" next to each piece of moulding to be pre-assembled.
- Finishing Option is available for pre-assembled decorative mouldings. See the Finishing Program Section for pricing and finish availability.

