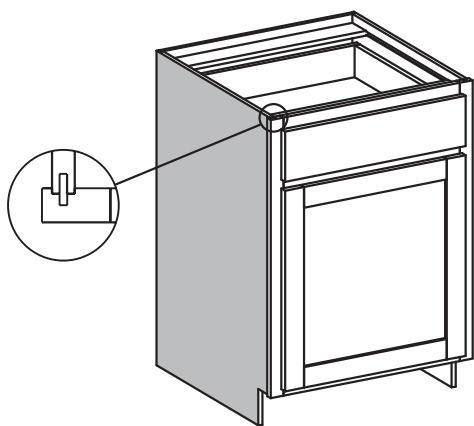
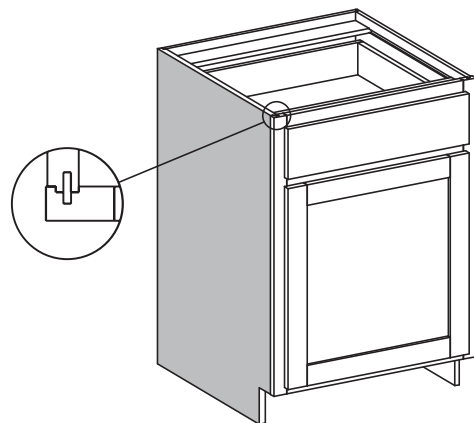


## Exposed Ends (EXP)



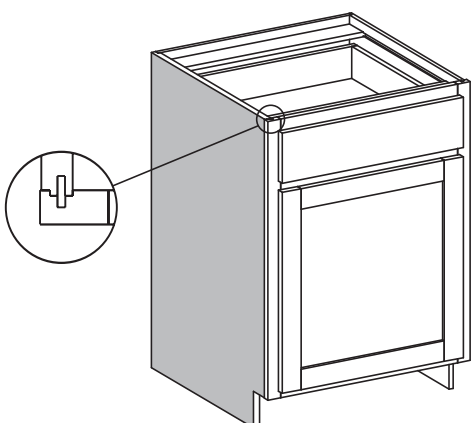
- Matching specie veneer on 1/2" thick cabinet sides.
- Specify: "L" (Left), "R" (Right) or "B" (Both).
- 1/4" reveal from edge of front frame to surface of the side.
- Hard Maple and Soft Maple cabinets have Hard Maple exposed ends.
- Use Conestoga's online ordering system, Con-Nex or Conestoga order entry for pricing.

## Flush Ends (FL)



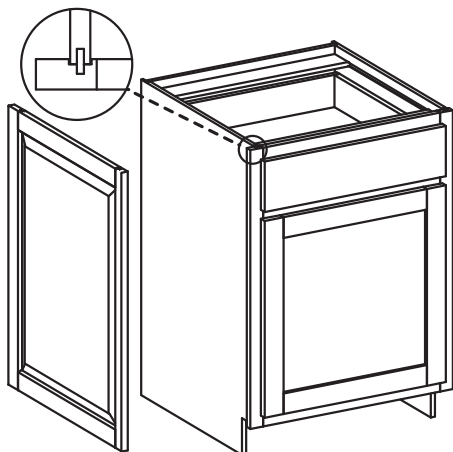
- Matching specie veneer on exposed of 3/4" thick cabinet sides.
- Specify: "L" (Left), "R" (Right) or "B" (Both).
- 1/32" reveal from edge of front frame to surface of the side.
- Hard Maple and Soft Maple cabinets have Hard Maple flush ends.
- All cabinets ordered with Colourtone, primer or Prism Paints will use a hybrid side panel.
  - ♦ Hybrid plywood side panels with Flush Ends have a paintable paper-coated MDF exterior and UV topcoated White Birch interior.
  - ♦ Hybrid plywood side panels on cabinets with both Flush Ends and Matching Interior will have a paintable MDF surface on both sides.
- Use Conestoga's online ordering system, Con-Nex or Conestoga order entry for pricing.

## Flush Unexposed Ends (FUE)



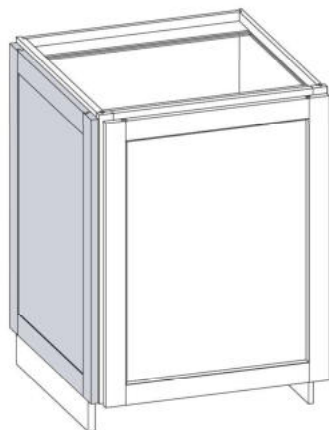
- Shop-grade veneer on exterior face of 3/4" thick cabinet sides – finishing is not available.
- Order when thicker, non-exposed sides are required for solid surface and stone countertops.
- Matching interior not available.
- Specify: "L" (Left), "R" (Right) or "B" (Both).
- 1/32" reveal from edge of front frame to surface of the side.
- Use Conestoga's online ordering system, Con-Nex or Conestoga order entry for pricing.

### Prep for False Door Side Option (PFD)



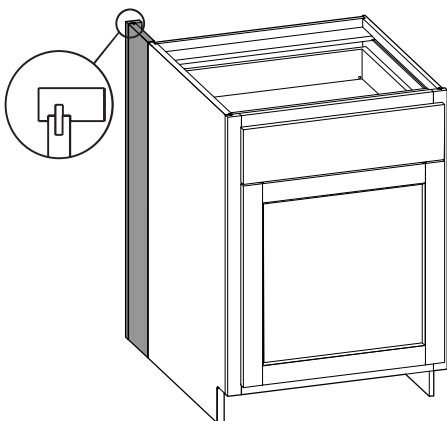
- Prepares the sides of Wall, Base, Tall or Vanity cabinets to accept 3/4" thick doors as decorative, integral cabinet sides.
- False doors not included, must be ordered separately.
- Cabinet carcass width is reduced to provide a 13/16" extension of the front frame on left, right or both sides. Overall cabinet front width remains unchanged.
- Left and right stiles are 1-1/2" wide.
- Specify: "L" (Left), "R" (Right) or "B" (Both).
- Available on most Wall, Base and Tall cabinets.
- Concealed Inset Hinges and Pull-Out Trays (POT's) are not available with Prepare for False Door Side Option.
- Order false door width 3/4" less than overall cabinet depth. Height of false door equals cabinet height.
- Use Conestoga's online ordering system, Con-Nex or Conestoga order entry for pricing.

### False Door Side (FDS)



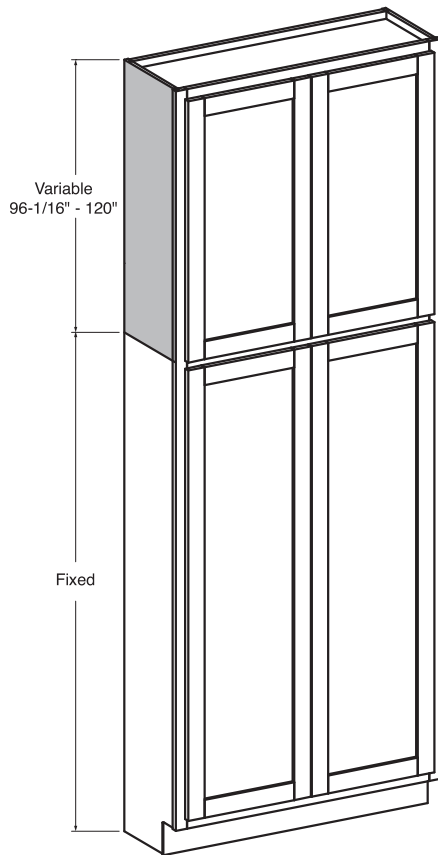
- Option calculates false door for decorative side appliques based on the overlay selected.
- Available in 1-1/4" and 1-3/8" overlays only.
- Minimum cabinet depth is 12".
- Option includes Flush End.
- Available with Custom Top Reveal (CTR) and Custom Bottom Reveal (CBR) Options. Calculation rules apply.
- Specify FDS "L" (Left), "R" (Right) or "B" (Both).
- Available on most Wall, Base and Tall cabinets.
- Option pricing is available when quoting/ordering through Con-Nex only.

### Extend Side Back (ESB)



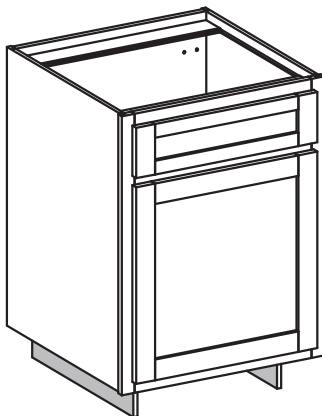
- Option extends cabinet side(s) to create island back seating space on most Base cabinets.
- Extension is customizable in 1/16" increments between 1" to 15" in depth.
- Maximum extension depth is 15".
- Extension edge can be ordered with end treatment options. Specify 1-1/2" to 3" width. The extension edge will receive a spline groove and a 3/4" thick stile will be grooved for standard Cabinet Systems spline assembly.
- Order 1/4" cut-to-size plywood to finish the inside of the extension and or the back of the island configuration.
- Use Conestoga's online ordering system, Con-Nex or Conestoga order entry for pricing.

## Extended Height Option - Tall Cabinets



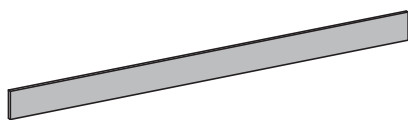
- Extended Height Option - Tall Cabinets
- Choose to extend height of Custom Size Tall Cabinets from 96-1/16" to 120".
- Available in Cherry and Hard Maple only.
- Flush ends only.
- Matching interiors not available. White Birch UV topcoated material will be used.
- Fixed section is based on cabinet configuration chosen.
- Separate 4" high toe platform is available in all heights and is strongly recommended for the extended height option.
- When cabinet height changes, top opening height changes accordingly.
- Maximum overall height is 120".
- 96-1/16" to 108" tall cabinet has eight shelves.
- 108-1/16" to 120" tall cabinet has nine shelves.
- Use Conestoga's online ordering system, Con-Nex or Conestoga order entry for pricing.

## Toe Space Side Option (TSS)



- Places standard toe space depth on the left, right or both sides of most base cabinets.
- Specify "TSS" – "L" (Left), "R" (Right) or "B" (Both).
- Toe Space Side Option is not available on the following cabinets: BCP, BCPLS, BSC, BCFD, BAE, BEAL/R, RTB, RTR, RTL, TCH, DB, DBFD, DB2D, DB3D, LF2D, ORS, DWEP, REP, BFC, WSUD and FS.
- Minimum cabinet width and depth is 15". TSS on both sides requires minimum depth of 18".
- Use Conestoga's online ordering system, Con-Nex or Conestoga order entry for pricing.

## Plywood Toeboard Strips

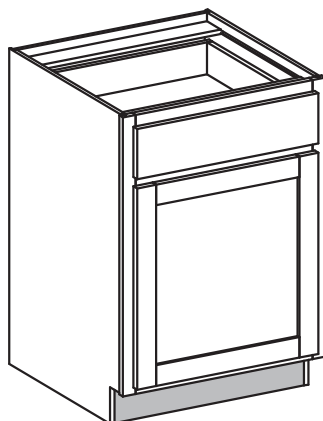


**Plywood Toeboard Strips  
TE5003 (96" x 4")**

Specie
Cherry
Maple
Oak, Red

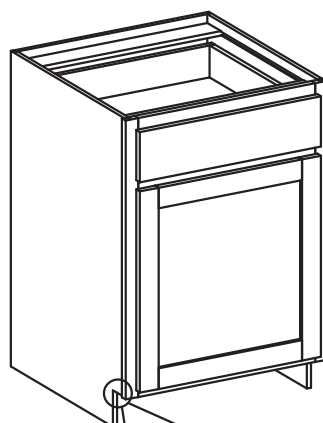
- 1/2" thick 96" x 4" plywood strips available in Cherry, Hard Maple or Red Oak.
- Order as a loose part; specify specie.
- Moulding Cut-Down Option is available on plywood Toeboard Strips to combat the exorbitant fees freight carriers are charging for packages 96" or longer.
- Option cuts down toestrip to 90".
- To order specify "Cut-Down to 90 Inch" Option.
- Upcharge applies; use Conestoga's online ordering system, Con-Nex or Conestoga order entry for pricing.

## Plywood Toeboard Backer (PTB)



- 1/2" thick unfinished plywood strips.
- Designed to fully enclose Base, Tall and Vanity toe spaces and provide a backer for finished toeboards or mouldings.
- Backers are 4-15/16" high, sized to fit between cabinet sides in the toe space notch.
- To order, select Toeboard Backer Option.
- Use Conestoga's online ordering system, Con-Nex or Conestoga order entry for pricing.

## Square Toe Kick Notch Option (STN)

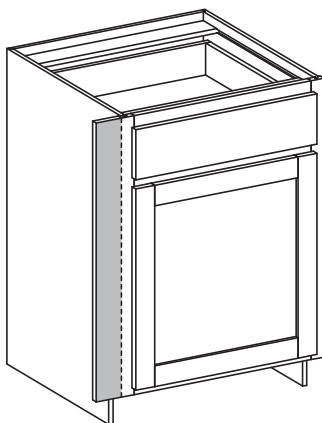


Standard 1/4" radius

90° square toe notch

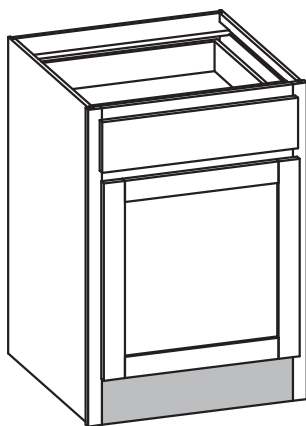
- Intersecting corner of Square Toe Kick Notch is 90°.
- Aids in Toeboard moulding installation.
- Available on most Base, Tall and Vanity cabinets.
- Not available with Flush Toe or Shaped Bottom Rail Options.
- Use Conestoga's online ordering system, Con-Nex or Conestoga order entry for pricing.

## Extended Stiles (EXT)/Custom Extended Stiles (CSEXT)



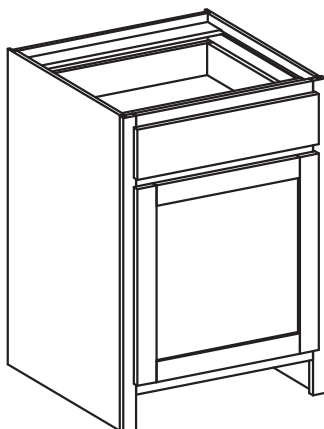
- Provides 3" wide frame extension (standard) for field trimming or custom width stile extensions to avoid cutting at installation.
- If CSEXT is ordered, stile width can be specified between 1/4" and 3" in 1/16" increments.
- For standard 3" extension specify: EXL (Extended Left), EXR (Extended Right) or EXB (Extended Both).
- For custom extension specify: CSEXL (Custom Extended Left), CSEXR (Custom Extended Right) or CSEXB (Custom Extended Both) followed by the width required.
- Available on most Wall, Base, Tall, Vanity and Home Office units.
- Use Conestoga's online ordering system, Con-Nex or Conestoga order entry for pricing.

## Flush Toe (FT)



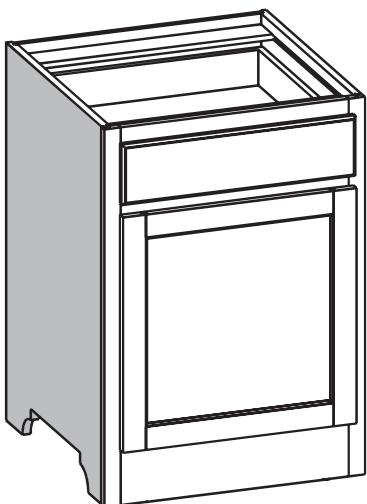
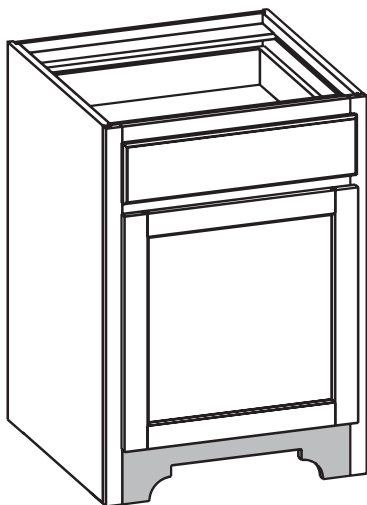
- Bottom rail height is 5-1/2".
- Specify: "FT" (Flush Toe).
- Cabinet side is manufactured without toe notch.
- 96" Tall cabinets do not use a toe platform.
- Available on most Base and Tall cabinets.
- Use Conestoga's online ordering system, Con-Nex or Conestoga order entry for pricing.

## Leg Extension (LE)



- Option extends exterior frame stiles to the floor into toe space for furniture "leg" styling.
- Specify "LE" – "L" (Left), "R" (Right) or "B" (Both).
- When "LE"-"B" is ordered with beaded inset, bottom opening will be beaded.
- Stile width is 1-1/2".
- Not available with loose toe platform or shaped bottom rail.
- Toe Space Side Option is available, not on the same side as the extension.
- Available on most Base, Tall and Vanity cabinets.
- Minimum cabinet width is 9".
- Toeboard Backer Option available. Install prior to final cabinet installation
- Use Conestoga's online ordering system, Con-Nex or Conestoga order entry for pricing.

## Shaped Bottom Rail (SBR)/Shaped Side Option (SS)



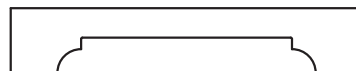
**CWS6**  
Elegant Arch shown on both

- Rail height is 5-1/2". Flush toe is standard; cabinet side is constructed without toe notch.
- Roman, Elegant, Classic and Traditional Arch designs are centered on bottom rail and length of cabinet side.
- To order specify using CWS designations associated with the design – see shape options below.
- Not available with Loose Toe Platform (LTP) or Toe Space Side (TSS).
- Available on most Base, Tall and Vanity cabinets.
- Minimum cabinet width and depth is 15".
- **Shaped Side (SS)**
  - ♦ Specify "SS" – "L" (Left), "R" (Right) or "B" (Both).
  - ♦ Not available with Extended Stiles (EXT) or Flush Unexposed Ends (FUE).
- **Shaped Bottom Rail (SBR)**
  - ♦ Elegant 2 and Traditional 2 designs are available on the Left only, Right only or Both sides of the bottom rail.
  - ♦ Elegant 2 and Traditional 2 designs rise to 1-1/2" framing. These designs will not match Elegant or Traditional Arch designs.
  - ♦ Elegant 2 and Traditional 2 designs are not available with the Shaped Side Option.
- Use Conestoga's online ordering system, Con-Nex or Conestoga order entry for pricing.

### Shape Bottom Rail / Shaped Side



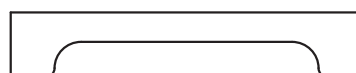
**CWS4 – Roman Arch**



**CWS6 – Elegant Arch**

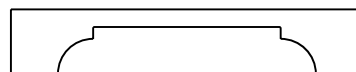


**CWS5 – Classic Arch**

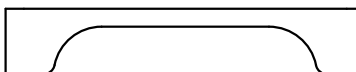


**CWS7 – Traditional Arch**

### Shape Bottom Rail Only



**Elegant 2:**  
**AB1B – Both**  
**AB1L – Left**  
**AB1R – Right**



**Traditional 2:**  
**AB2B – Both**  
**AB2L – Left**  
**AB2R – Right**

## Shelf Options

### Omit Shelving (OS)

- Choose to omit interior shelving in Wall, Base and Tall cabinets.
- Wall and Base Omit Shelving Option deletes all shelves.
- Tall cabinets: specify top, bottom or all shelves.
- Omits shelving only if shelf holes are not required, specify No Shelf Hole Option.
- Use Conestoga's online ordering system, Con-Nex or Conestoga order entry for pricing.

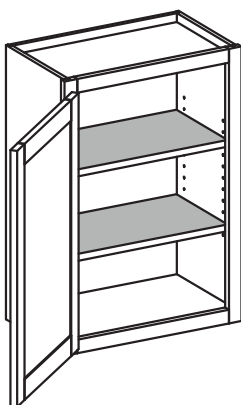
### No Shelf Hole Option (NSH)

- Choose to omit line boring for shelf rests in Wall, Base and Tall cabinets.
- Most Wall and all Base No Shelf Hole Option deletes all holes.
- Two Tiered Wall (TTW) cabinets and Tall cabinets: specify Top, Bottom or All holes.
- Select No Shelf Holes Option only if shelves are not required, also specify Omit Shelving Option.
- No upcharge.

### Extra Deep Shelf Option (EDS)

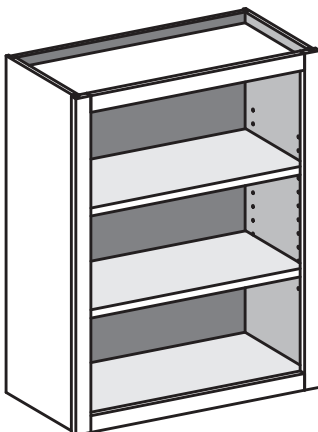
- Option increases shelf depth as cabinet depth is increased.
- Shelf depth is approximately 2" less than the overall cabinet depth.
- Plywood shelves only; not available with Solid Wood Shelf upgrade.
- Use Conestoga's online ordering system, Con-Nex or Conestoga order entry for pricing.

### Solid Wood Shelf Upgrade (WS)



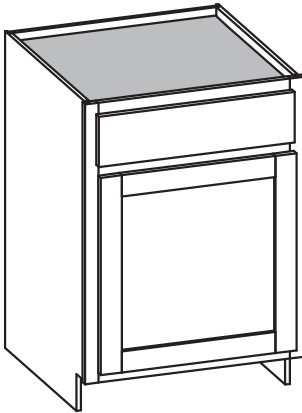
- Replaces 3/4" thick prefinished plywood shelving with 3/4" thick, prefinished solid wood shelving with a bullnose on front edge.
- Solid Wood Shelves available up to 18" deep.
- Solid Wood Shelf upgrade is not available with Matching Interior.
- Use Conestoga's online ordering system, Con-Nex or Conestoga order entry for pricing.

### Matching Interior (MI)



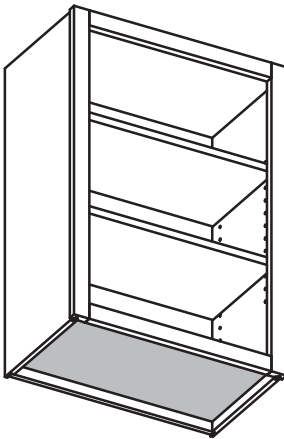
- Cabinets will have unfinished matching specie interior sides, tops, bottoms, shelves and backs.
- Specify: "MI" (Matching Interior).
- Flush unexposed ends are not available.
- Shelves are matching specie 3/4" plywood with veneer edgebanding on front edge.
- Matching specie available in Cherry, Hard Maple, Red Oak.
- Hard Maple and Soft Maple cabinets have Hard Maple veneered interior components.
- Cabinets with Matching Interior standard do not have the Matching Interior upcharge included in the cabinet price.

### Dust Top (DT)



- Full top in place of front and back top strips.
- Use Conestoga's online ordering system, Con-Nex or Conestoga order entry for pricing.

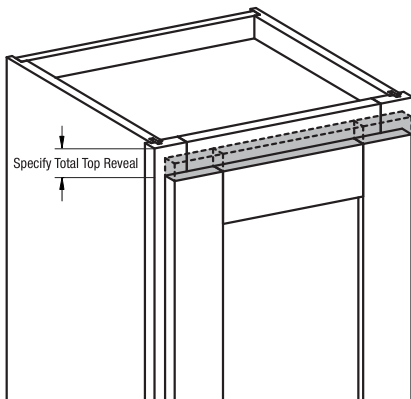
### Natural Finished Bottom (NB)



- Clear UV topcoated finish on White Birch veneer on top and bottom of Wall cabinets.
- To order, specify Natural finished bottom.
- Use Conestoga's online ordering system, Con-Nex or Conestoga order entry for pricing.

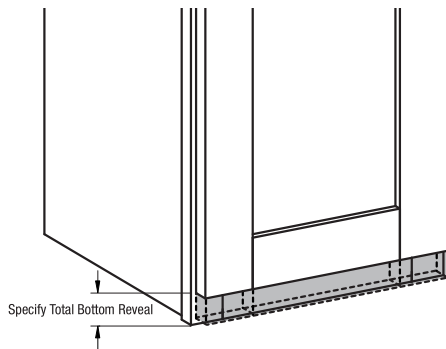


### Custom Top Reveal (CTR)



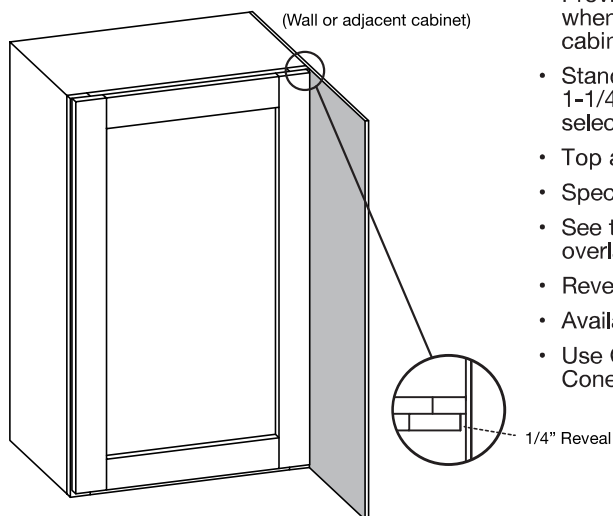
- Reduces door height to provide additional space to attach decorative mouldings directly to a cabinet front frame.
- Left, right and bottom reveal remain unchanged.
- Available with 1-1/4" and 1-3/8" overlay only.  
1-1/4" overlay – 1/2" top reveal is standard, CTR available – 9/16" – 1-1/4". 1-3/8" overlay – 1/4" top reveal is standard, CTR available – 5/16" – 1-1/4".
- Reveal can be specified in 1/16" increments.
- Specify: "CTR" followed by the total amount of top reveal required.
- Maximum reveal is 1-1/4".
- See the Doors/Overlay Options Section for standard overlay rules.
- Use Conestoga's online ordering system, Con-Nex or Conestoga order entry for pricing.

### Custom Bottom Reveal (CBR)



- Reduces door height to provide additional space to attach light rail or decorative mouldings directly to the bottom rail of the cabinet front frame.
- Left, right and top reveal remain unchanged.
- Available with 1-1/4" and 1-3/8" overlay only.
- Reveal can be specified in 1/16" increments.
- Specify: "CBR" followed by the total amount of bottom reveal required.
- Maximum reveal is 1-1/4".
- See the Doors/Overlay Options Section for standard overlay rules.
- Use Conestoga's online ordering system, Con-Nex or Conestoga order entry for pricing.

### Increase Side Reveal (ISR)



- Provides additional door clearance for 1-3/8" overlay when cabinets are installed adjacent to walls or deeper cabinetry.
- Standard reveal is changed from 1/8" to 1/4" and 1-1/4" overlay hinges will be provided when hinges are selected.
- Top and bottom reveal remain unchanged.
- Specify: "ISR" Left, Right or Both.
- See the Doors/Drawer Fronts Section for standard overlay rules.
- Reveal increased on the hinged side of doors.
- Available on most Wall, Base, Tall and Vanity cabinets.
- Use Conestoga's online ordering system, Con-Nex or Conestoga order entry for pricing.