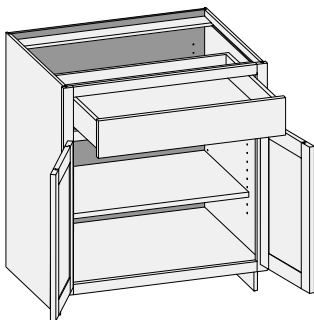
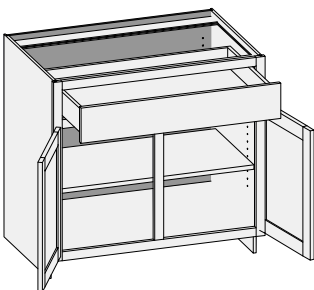


B/CSB - Base

Custom Size Ranges
 Single Door Width: 12" – 24"
 Butt Door Width: 24" – 36"
 Height: 31-1/2" – 42"
 Depth: 12", 15", 18", 21", 24",
 27", 30"

- When height changes, lower opening height changes. Drawer opening height fixed at 5".
- Specify single or butt doors on custom size cabinets 24" wide.

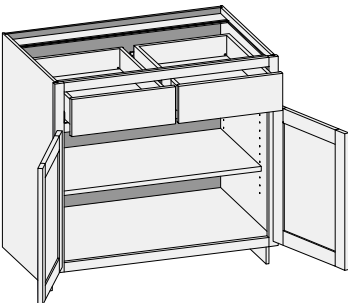
24" Deep			
Single Door Cabinets		Butt Door Cabinets	
B1234.5	B2134.5	B2434.5BD	B3334.5BD
B1534.5	B2434.5	B2734.5BD	B3634.5BD
B1834.5		B3034.5BD	

B/CSB2D1D - Base Two Door One Drawer

Custom Size Ranges
 Width: 27" – 36"
 Height: 31-1/2" – 42"
 Depth: 12", 15", 18", 21", 24",
 27", 30"

- When height changes, lower opening height changes. Drawer opening height fixed at 5".

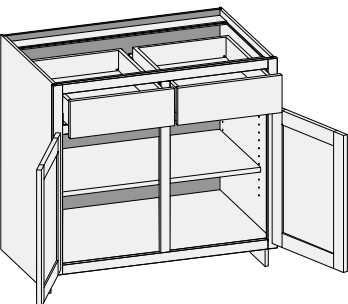
24" Deep
B2734.5

B/CSBBD2D - Base Butt Door Two Drawer

Custom Size Ranges
 Width: 30" – 36"
 Height: 31-1/2" – 42"
 Depth: 12", 15", 18", 21", 24",
 27", 30"

- When height changes, lower opening height changes. Drawer opening height fixed at 5".

24" Deep
B3034.5BD2D
B3334.5BD2D
B3634.5BD2D

B/CSB2D2D - Base Two Door Two Drawer

Custom Size Ranges
 Width: 30" – 48"
 Height: 31-1/2" – 42"
 Depth: 12", 15", 18", 21", 24",
 27", 30"

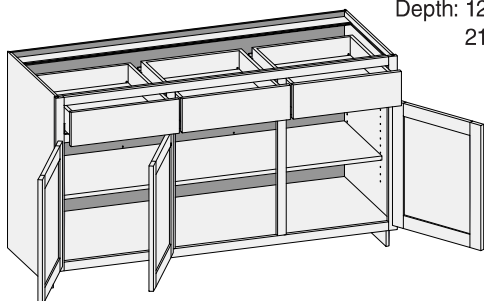
- When height changes, lower opening height changes. Drawer opening height fixed at 5".

24" Deep	
B3034.5	B4234.5
B3334.5	B4534.5
B3634.5	B4834.5
B3934.5	

Base Options Key: EXP = Exposed End(s) FL = Flush End(s) FUE = Flush Unexposed End(s) SS = Shaped Side PFD = Prep for False Door
 EXT = Extended Stile(s) FT = Flush Toe SBR = Shaped Bottom Rail LE = Leg Extension TSS = Toe Space Side OS = Omit Shelving
 NSH = No Shelf Holes WS = Solid Wood Shelves MI = Matching Interior DT = Dust Top PTB = Plywood Toe Backer

Framed | Summer 2025

B/CSB3D3D - Base Three Door Three Drawer

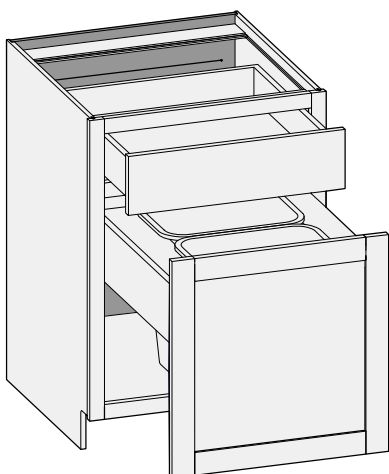


Custom Size Ranges
Width: 48" – 72"
Height: 31-1/2" – 42"
Depth: 12", 15", 18",
21", 24", 27", 30"

- Additional shelf holes are provided on cabinet back to support wide shelves.
- Doors hinged on center stile require 1/2" overlay hinges for 1-1/4" or 1-3/8" overlay.
- When height changes, lower opening height changes. Drawer opening height fixed at 5".
- Unavailable Option: WS.

24" Deep	
B5134.5	B6334.5
B5434.5	B6634.5
B5734.5	B6934.5
B6034.5	B7234.5

BTCP/CSBTCP - Base w/Trash Can Pull-Out

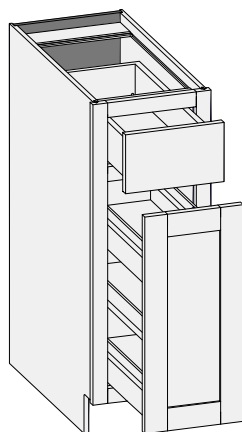


Custom Size Ranges
Width: 18" – 27"
Height: 31-1/2" – 34-1/2"
Depth: 24"

- Cabinet depth is 24". Depth customization is not available due to Trash Can Pull-Out and hardware requirements.
- Trash Can Pull-Out unit is prefinished Natural Birch with a Hard Maple plywood top.
- Single can, double cans or units with no cut-outs are available.
- Pull-out unit is 6" high to accommodate door mounting.
- Units include 28 quart grey waste cans.
- Units 18" – 23-15/16" have one can; units 24" – 27" includes 2 cans. When ordering custom size cabinets within these ranges specify single can, double cans or no cut-outs.
- When cabinet height changes, lower opening height changes. Drawer opening height fixed at 5".
- Not available in inset applications.
- Unavailable Option: PFD.

24" Deep	
BTCP1834.5	BTCP2434.5
BTCP2134.5	BTCP2734.5

BPO/CSBPO Base Pull Out



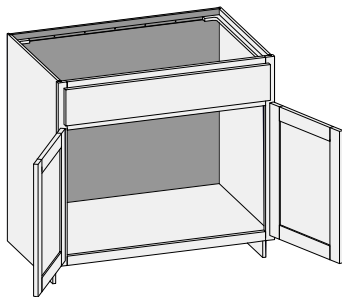
Custom Size Ranges
Width: 9" and 12"
Height: 34-1/2"
Depth: 24"

- Cabinet depth is 24". Depth customization is not available due to pull-out and hardware requirements.
- Unit includes a fully assembled pull-out unit with full extension drawer slides and a mounting cleat for quick and easy installation.
- Pull-out is constructed from Natural Birch solids and plywood finished with a durable, clear UV topcoat and includes two fixed shelves and one adjustable shelf.
- Integrated 6-way adjustable door mounting hardware allows for easy installation for all overlays.
- Unavailable Option: SBR.

24" Deep	
BPO0934.5	BPO1234.5

Base Options Key: EXP = Exposed End(s) FL = Flush End(s) FUE = Flush Unexposed End(s) SS = Shaped Side PFD = Prep for False Door
EXT = Extended Stile(s) FT = Flush Toe SBR = Shaped Bottom Rail LE = Leg Extension TSS = Toe Space Side OS = Omit Shelving
NSH = No Shelf Holes WS = Solid Wood Shelves MI = Matching Interior DT = Dust Top PTB = Plywood Toe Backer

BS/CSBS - Base Sink w/Butt Doors

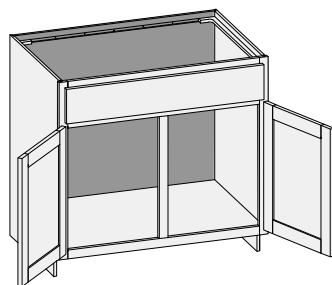


Custom Size Ranges
 Width: 24" – 36"
 Height: 31-1/2" – 42"
 Depth: 18" – 30"

- False drawer front.
- When height changes, lower opening height changes. Drawer opening height fixed at 5".
- Specify single or butt doors on custom size cabinets 24" wide.

24" Deep	
BS2434.5BD	BS3334.5BD
BS2734.5BD	BS3634.5BD
BS3034.5BD	

BS/CSBS2D1D - Base Sink Two Door One Drawer

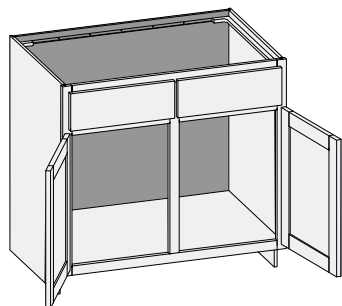


Custom Size Ranges
 Width: 27" – 36"
 Height: 31-1/2" – 42"
 Depth: 18" – 30"

- False drawer front.
- When height changes, lower opening height changes. Drawer opening height fixed at 5".

24" Deep
BS2734.5

BS/CSBS2D2D - Base Sink Two Door Two Drawer

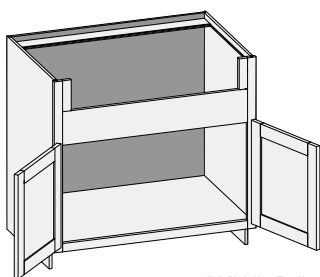


Custom Size Ranges
 Width: 30" – 48"
 Height: 31-1/2" – 42"
 Depth: 18" – 30"

- Two false drawer fronts.
- When height changes, lower opening height changes. Drawer opening height fixed at 5".

24" Deep	
BS3034.5	BS4234.5
BS3334.5	BS4534.5
BS3634.5	BS4834.5
BS3934.5	

ASB/CSASB - Apron Sink Base w/Butt Doors



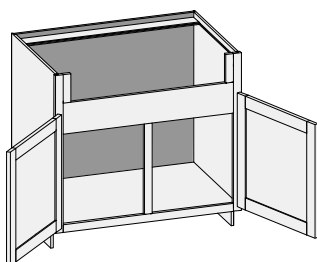
6" Middle Rail

Custom Size Ranges
Width: 24" – 36"
Height: 31-1/2" – 42"
Depth: 18" – 30"

- Sink bowl opening is 5-1/2" high, width is 6" less than cabinet width.
- Sink opening is trimmable to 4-1/2" in height and 3" in width.
- When height changes, lower opening height changes.
- Specify single or butt doors on custom size cabinets 24" wide.

24" Deep	
ASB2434.5BD	ASB3334.5BD
ASB2734.5BD	ASB3634.5BD
ASB3034.5BD	

ASB/CSASBCS - Apron Sink Base w/Center Stile



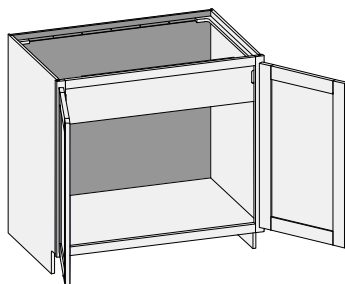
6" Middle Rail

Custom Size Ranges
Width: 27" – 48"
Height: 31-1/2" – 42"
Depth: 18" – 30"

- Sink bowl opening is 5-1/2" high, width is 6" less than cabinet width.
- Sink opening is trimmable to 4-1/2" in height and 3" in width.
- When height changes, lower opening height changes.

24" Deep	
ASB2734.5	ASB3934.5
ASB3034.5	ASB4234.5
ASB3334.5	ASB4534.5
ASB3634.5	ASB4834.5

BSFD/CSBSFD - Base Sink Full Door w/Butt Doors

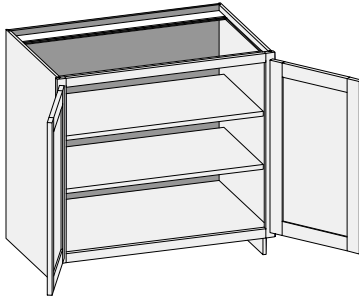


Custom Size Ranges
Width: 24" – 36"
Height: 31-1/2" – 34-1/2"
Depth: 18" – 30"

- 6-3/4" high apron conceals sink bowl, accommodates hinges and matches cabinet interior.
- Specify single or butt doors on custom size cabinets 24" wide.

24" Deep	
BSFD2434.5BD	BSFD3334.5BD
BSFD2734.5BD	BSFD3634.5BD
BSFD3034.5BD	

Base Options Key: EXP = Exposed End(s) FL = Flush End(s) FUE = Flush Unexposed End(s) SS = Shaped Side PFD = Prep for False Door
EXT = Extended Stile(s) FT = Flush Toe SBR = Shaped Bottom Rail LE = Leg Extension TSS = Toe Space Side OS = Omit Shelving
NSH = No Shelf Holes WS = Solid Wood Shelves MI = Matching Interior DT = Dust Top PTB = Plywood Toe Backer

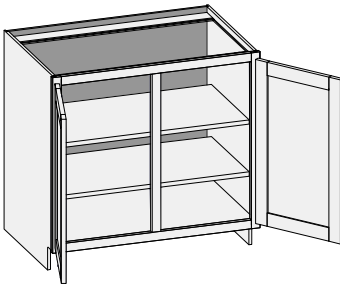
BFD/CSBFD - Base Full Door


Custom Size Ranges
 Single Door Width: 9" – 24"
 Butt Door Width: 24" – 36"
 Height: 10" – 48"
 Depth: 5-1/2" – 30"

- BFD0934.5 does not include shelves.
- 10" – 22" high has no shelves.
- 22-1/16" – 28" high has one shelf.
- 28-1/16" – 40" high has two shelves.
- 40-1/16" – 48" high has three shelves.
- Specify single or butt doors on custom size cabinets 24" wide.

Single Door Cabinets – 24" Deep		Butt Door Cabinets – 24" Deep	
BFD0934.5	BFD1834.5	BFD2434.5BD	BFD3334.5BD
BFD1234.5	BFD2134.5	BFD2734.5BD	BFD3634.5BD
BFD1534.5	BFD2434.5	BFD3034.5BD	

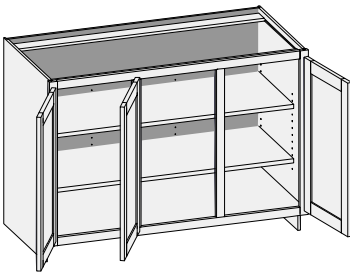
Single Door Cabinets – 12-1/2" Deep		Butt Door Cabinets – 12-1/2" Deep	
BWD1234.5	BWD2134.5	BWD2434.5BD	BWD3334.5BD
BWD1534.5	BWD2434.5	BWD2734.5BD	BWD3634.5BD
BWD1834.5		BWD3034.5BD	

BFD/CSBFDCS - Base Full Door w/Center Stile


Custom Size Ranges
 Width: 27" – 48"
 Height: 10" – 48"
 Depth: 5-1/2" – 30"

- 10" – 22" high has no shelves.
- 22-1/16" – 28" high has one shelf.
- 28-1/16" – 40" high has two shelves.
- 40-1/16" – 48" high has three shelves.

24" Deep		12-1/2" Deep	
BFD2734.5	BFD3934.5	BWD2734.5	BWD3934.5
BFD3034.5	BFD4234.5	BWD3034.5	BWD4234.5
BFD3334.5	BFD4534.5	BWD3334.5	BWD4534.5
BFD3634.5	BFD4834.5	BWD3634.5	BWD4834.5

BFD/CSBFD2CS - Base Full Door w/Two Center Stiles


Custom Size Ranges
 Width: 48" – 72"
 Height: 10" – 42"
 Depth: 5-1/2" – 30"

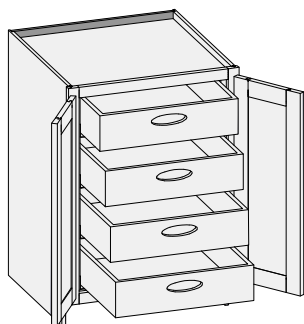
- Additional shelf holes are provided on cabinet back to support wide shelves.
- Doors hinged on center stile require 1/2" overlay hinges for 1-1/4" or 1-3/8" overlay.
- 10" – 22" high has no shelves.
- 22-1/16" – 28" high has one shelf.
- 28-1/16" – 40" high has two shelves.
- 40-1/16" – 48" high has three shelves.
- Unavailable Option: WS.

24" Deep	
BFD5134.5	BFD6334.5
BFD5434.5	BFD6634.5
BFD5734.5	BFD6934.5
BFD6034.5	BFD7234.5

Base Options Key: EXP = Exposed End(s) FL = Flush End(s) FUE = Flush Unexposed End(s) SS = Shaped Side PFD = Prep for False Door
 EXT = Extended Stile(s) FT = Flush Toe SBR = Shaped Bottom Rail LE = Leg Extension TSS = Toe Space Side OS = Omit Shelving
 NSH = No Shelf Holes WS = Solid Wood Shelves MI = Matching Interior DT = Dust Top PTB = Plywood Toe Backer

Framed | Summer 2025

BFDRO/CSBFDRO - Base Full Door Roll-Out

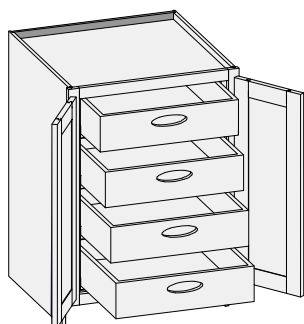


Custom Size Ranges
 Single Door Width: 12" – 24"
 Butt Door Width: 24" – 36"
 Height: 31-1/2" – 34-1/2"
 Depth: 12", 15", 18",
 21", 24", 27", 30"

- Units are configured with four 5" high drawer boxes. Interior panels are pre-drilled for drawer slide placement and installation.
- Roll-out drawers include hand pulls. Specify Standard, Circle or Ellipse (shown) pull.
- Specify single or butt doors on custom size cabinets 24" wide.

Single Door Cabinets – 24" Deep		Butt Door Cabinets – 24" Deep	
BFDRO1234.5	BFDRO2134.5	BFDRO2434.5BD	BFDRO3334.5BD
BFDRO1534.5	BFDRO2434.5	BFDRO2734.5BD	BFDRO3634.5BD
BFDRO1834.5		BFDRO3034.5BD	

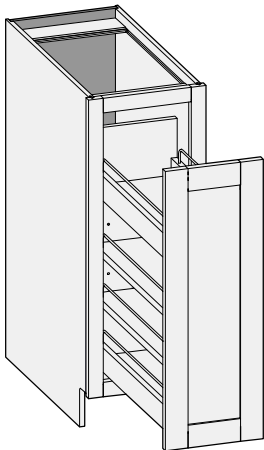
BFDROI/CSBFDROI - Base Full Door Roll-Out Inset



Custom Size Ranges
 Single Door Width: 15" – 24"
 Butt Door Width: 24" – 36"
 Height: 31-1/2" – 34-1/2"
 Depth: 12", 15", 18",
 21", 24", 27", 30"

- Specifically designed for inset application.
- Units are configured with four 5" high drawer boxes. Interior panels are pre-drilled for drawer slide placement and installation.
- Drawer slides are 3" less than the depth of the cabinet to accommodate inset doors and hardware.
- Roll-out drawers include hand pulls. Specify Standard, Circle or Ellipse (shown) pull.
- Specify single or butt doors on custom size cabinets 24" wide.

Single Door Cabinets – 24" Deep		Butt Door Cabinets – 24" Deep	
BFDROI1534.5	BFDROI2134.5	BFDROI2434.5BD	BFDROI3334.5BD
BFDROI1834.5	BFDROI2434.5	BFDROI2734.5BD	BFDROI3634.5BD
		BFDROI3034.5BD	

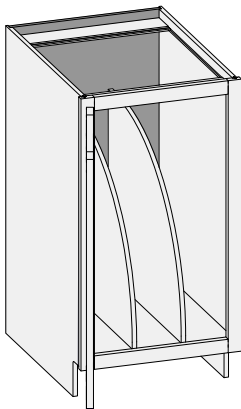
BFDPO/CSBFDPO Base Full Door Pull Out


Custom Size Ranges
 Width: 9", 12", 15"
 and 18"
 Height: 34-1/2"
 Depth: 24"

- Cabinet depth is 24". Depth customization is not available due to pull-out and hardware requirements.
- Unit includes a fully assembled pull-out that includes full extension drawer slides and a mounting cleat for quick and easy installation.
- Pull-out is constructed from Natural Birch solids and plywood finished with a durable, clear UV topcoat and includes two fixed shelves and two adjustable shelves.
- Integrated 6-way adjustable door mounting hardware allows for easy installation for all overlays.
- Unavailable Option: WS.

24" Deep

BFDPO0934.5	BFDPO1234.5	BFDPO1534.5	BFDPO1834.5
-------------	-------------	-------------	-------------

BFDTD/CSBFTD Base Full Door Tray Divider


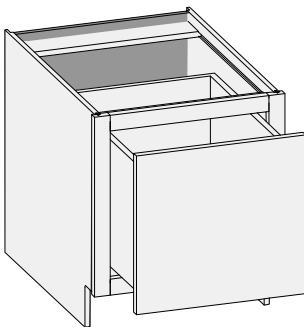
Not available prefit: Overlay only

Custom Size Ranges
 Width: 9" - 18"
 Height: 34-1/2"
 Depth: 24"

- Cabinet depth is 24". Depth customization and inset doors and drawer fronts are not available due to tray divider design and installation requirements.
- Dividers are constructed from 1/2" Natural Birch UV topcoat plywood with an edgebanded front edge.
- Cabinet floor is dovetailed and back includes pilot holes to install dividers.
- Units 9" - 12" have 1 divider centered; units 12-1/16" - 18" have 2 dividers. As cabinet width increases, space between dividers increases equally.
- Unavailable Option: WS.

24" Deep

BFTD0934.5	BFTD1234.5	BFTD1534.5	BFTD1834.5
------------	------------	------------	------------

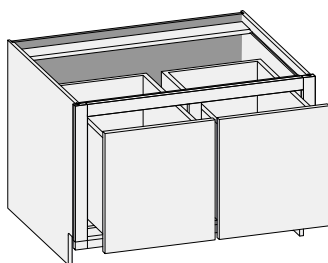
CSB1D - Base One Drawer


Custom Size Ranges
 Width: 12" - 36"
 Height: 12" - 21"
 Depth: 12", 15", 18",
 21", 24", 27",
 30"

- When height changes, drawer box height changes proportionately.

Base Options Key: EXP = Exposed End(s) FL = Flush End(s) FUE = Flush Unexposed End(s) SS = Shaped Side PFD = Prep for False Door
 EXT = Extended Stile(s) FT = Flush Toe SBR = Shaped Bottom Rail LE = Leg Extension TSS = Toe Space Side OS = Omit Shelving
 NSH = No Shelf Holes WS = Solid Wood Shelves MI = Matching Interior DT = Dust Top PTB = Plywood Toe Backer

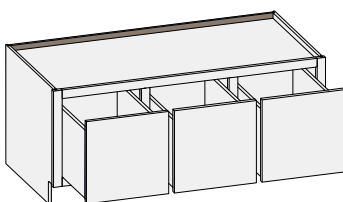
CSB1DCS - Base One Drawer w/Center Stile



Custom Size Ranges
Width: 30" – 48"
Height: 12" – 21"
Depth: 12", 15", 18",
21", 24", 27", 30"

- When height changes, drawer box height changes proportionately.

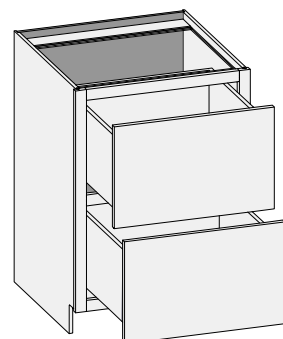
CSB1D2CS - Base One Drawer w/ 2 Center Stiles



Custom Size Ranges
Width: 36" – 96"
Height: 12" – 21"
Depth: 12", 15", 18",
21", 24", 27", 30"

- When height changes, drawer box height changes proportionately.
- The width of the drawer fronts are equal. Front frame opening widths are adjusted accordingly based on selected door overlay to maintain published reveals.

B2D/CSB2D - Base Two Drawer

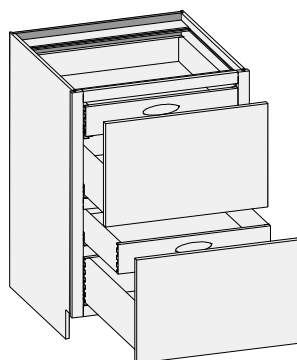


Custom Size Ranges
Width: 12" – 39"
Height: 31-1/2" – 34-1/2"
Depth: 12", 15", 18", 21",
24", 27", 30"

- When height changes, both drawer heights are equal.

24" Deep	
B2D1234.5	B2D2734.5
B2D1534.5	B2D3034.5
B2D1834.5	B2D3334.5
B2D2134.5	B2D3634.5
B2D2434.5	B2D3934.5

B2DRO/CSB2DRO - Base Two Drawer Roll-Out

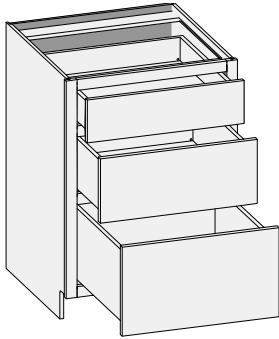


Custom Size Ranges
Width: 12" – 39"
Height: 31-1/2" – 34-1/2"
Depth: 12", 15", 18", 21",
24", 27", 30"

- Units are configured with 4" high roll-out drawers over 6" high conventional drawer box in each opening.
- Roll-out drawers include hand pulls. Specify Standard, Circle or Ellipse (shown) pull.
- When height changes, both drawer heights are equal.

24" Deep	
B2DRO1234.5	B2DRO2734.5
B2DRO1534.5	B2DRO3034.5
B2DRO1834.5	B2DRO3334.5
B2DRO2134.5	B2DRO3634.5
B2DRO2434.5	B2DRO3934.5

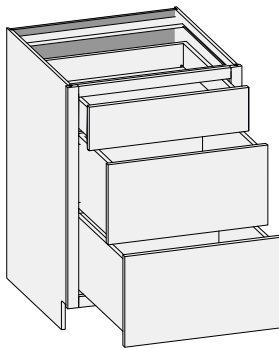
Base Options Key: EXP = Exposed End(s) FL = Flush End(s) FUE = Flush Unexposed End(s) SS = Shaped Side PFD = Prep for False Door
EXT = Extended Stile(s) FT = Flush Toe SBR = Shaped Bottom Rail LE = Leg Extension TSS = Toe Space Side OS = Omit Shelving
NSH = No Shelf Holes WS = Solid Wood Shelves MI = Matching Interior DT = Dust Top PTB = Plywood Toe Backer

B3D/CSB3D - Base Three Drawer


Custom Size Ranges
 Width: 12" – 39"
 Height: 31-1/2" – 34-1/2"
 Depth: 12", 15", 18", 21",
 24", 27", 30"

- When height changes, lower opening height changes. Upper and middle opening heights fixed at 5" and 8".

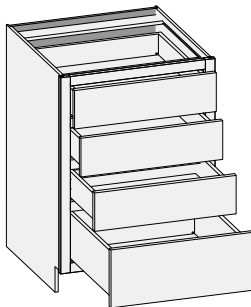
24" Deep	
B3D1234.5	B3D2734.5
B3D1534.5	B3D3034.5
B3D1834.5	B3D3334.5
B3D2134.5	B3D3634.5
B3D2434.5	B3D3934.5

B3DEH/CSB3DEH - Base Three Drawer w/Two Equal Height Lower Drawers


Custom Size Ranges
 Width: 12" – 39"
 Height: 31-1/2" – 34-1/2"
 Depth: 12", 15", 18",
 21", 24", 27", 30"

- When height changes, both lower opening heights change. Upper opening height fixed at 5".
- Lower drawer front heights are equal.

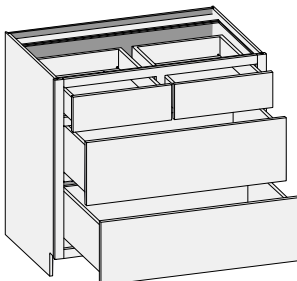
24" Deep	
B3DEH1234.5	B3DEH2734.5
B3DEH1534.5	B3DEH3034.5
B3DEH1834.5	B3DEH3334.5
B3DEH2134.5	B3DEH3634.5
B3DEH2434.5	B3DEH3934.5

B4D/CSB4D - Base Four Drawer


Custom Size Ranges
 Width: 12" – 39"
 Height: 31-1/2" – 34-1/2"
 Depth: 12", 15", 18", 21",
 24", 27", 30"

- When height changes, lower opening height changes. Upper opening height fixed at 5".
- Top 3 drawer front heights are equal.

24" Deep	
B4D1234.5	B4D2134.5
B4D1534.5	B4D2434.5
B4D1834.5	B4D2734.5

B4D2S2EH/CSB4D2S2EH - Base Four Drawer w/Two Side by Side Equal Height Lower Drawers


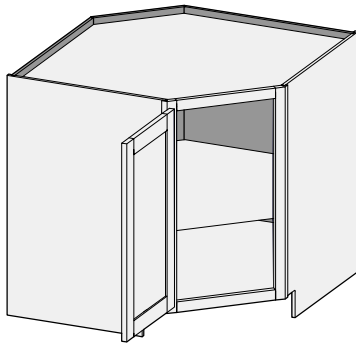
Custom Size Ranges
 Width: 30" – 39"
 Height: 31-1/2" – 34-1/2"
 Depth: 12", 15", 18",
 21", 24", 27", 30"

- When height changes, both lower opening heights change. Upper opening height fixed at 5".
- Lower drawer front heights are equal.

24" Deep	
B4D2S2EH3034.5	B4D2S2EH3634.5
B4D2S2EH3334.5	B4D2S2EH3934.5

Base Options Key: EXP = Exposed End(s) FL = Flush End(s) FUE = Flush Unexposed End(s) SS = Shaped Side PFD = Prep for False Door
 EXT = Extended Stile(s) FT = Flush Toe SBR = Shaped Bottom Rail LE = Leg Extension TSS = Toe Space Side OS = Omit Shelving
 NSH = No Shelf Holes WS = Solid Wood Shelves MI = Matching Interior DT = Dust Top PTB = Plywood Toe Backer

BCFD/CSBCFD - Base Corner Full Door



17" Face
18-3/32" Frame Width

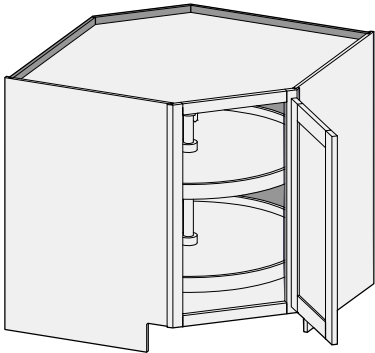
Custom Size Ranges
Width: 36"
Height: 31-1/2" – 42"
Depth: 36"

- Shelf standard.
- Shelf mounted wood susan shelves are available. See Section 11 – Accessories.
- Minimum entry opening width required is 35" (doorways, hallways, etc.).
- When ordered in 1-1/4" and 1-3/8" overlay applications (with or without hinges), cabinets will have their door sized as 1/2" overlay in width only to ensure adequate clearance.
- Use filler or extended stiles accordingly.
- Unavailable Options: SS, PFD, EXT, LE, TSS, WS.

24" Deep Side

BCFD3634.5

BCFDLS - Base Corner Full Door w/ Lazy Susan



17" Face
18-3/32" Frame Width

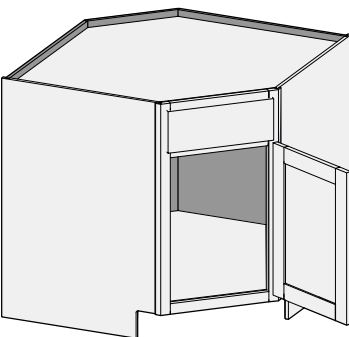
Custom Size Ranges
Width: 36"
Height: 34-1/2"
Depth: 36"

- Cabinet top and bottom are pre-drilled to accept hub assembly.
- Cabinet includes 32" diameter entry level plastic susan with two independently rotating shelves mounted on a center pole.
- White susan shelves feature a self-lubricating nylon bearing and tool-free height adjustment.
- Size customization is not available due to susan size constraints.
- Minimum entry opening width required is 35" (doorways, hallways, etc.).
- When ordered in 1-1/4" and 1-3/8" overlay applications (with or without hinges), cabinets will have their door sized as 1/2" overlay in width only to ensure clearance.
- Not available with inset applications.
- Unavailable Options: SS, PFD, EXT, LE, TSS.

24" Deep Side

BCFDLS 3634.5

BSC/CSBSC - Base Sink Corner



17" Face
18-3/32" Frame Width

Custom Size Ranges
Width: 36"
Height: 31-1/2" – 42"
Depth: 36"

- False drawer front.
- Minimum entry opening width required is 35" (doorways, hallways, etc.).
- When ordered in 1-1/4" and 1-3/8" overlay applications (with or without hinges), cabinets will have their door sized as 1/2" overlay in width only to ensure adequate clearance.
- Unavailable Options: SS, PFD, EXT, LE, TSS.

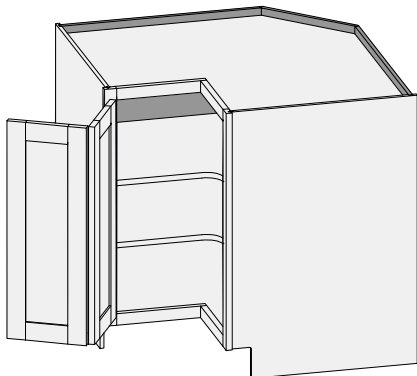
24" Deep Side

BSC3634.5

Base Options Key: EXP = Exposed End(s) FL = Flush End(s) FUE = Flush Unexposed End(s) SS = Shaped Side PFD = Prep for False Door
EXT = Extended Stile(s) FT = Flush Toe SBR = Shaped Bottom Rail LE = Leg Extension TSS = Toe Space Side OS = Omit Shelving
NSH = No Shelf Holes WS = Solid Wood Shelves MI = Matching Interior DT = Dust Top PTB = Plywood Toe Backer

BCP/CSBCP – Base Corner Pie Cut

Custom Size Ranges
 Width: 33" – 42"
 Height: 31-1/2" – 42"
 Depth: 33" – 42"



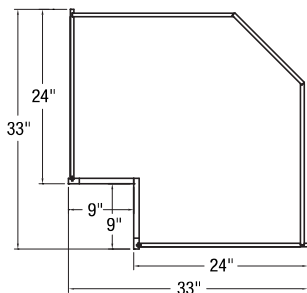
- Plywood shelf standard; wood shelf upgrade available on BCP3634.5 only.
- Shelf mounted wood susan shelves are available. See Section 11 – Accessories.
- CSBCP available with custom size legs. Specified width (left dimension) and depth (right dimension). Side dimension remains fixed; front frame pie cut opening adjusts as size changes.
- Minimum entry opening width required for BCP3634.5 is 35" (doorways, hallways etc.).
- When hinges are ordered in 1-1/4" and 1-3/8" overlay applications, cabinets will have their door sized as 1/2" overlay in width only.
- If hinges are not specified, 1-1/4" and 1-3/8" overlay sizing rules apply. These overlays require adequate clearance for door functionality between corner and adjacent cabinets. Use filler or extended stiles accordingly.
- Optional Soss hinges available.
- Unavailable Options: SS, PFD, EXT, LE, TSS, WS.

24" Deep Side

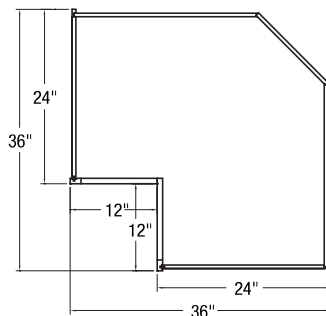
BCP3334.5

BCP3634.5

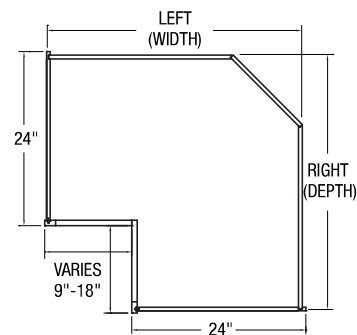
BCP3334.5



BCP3634.5

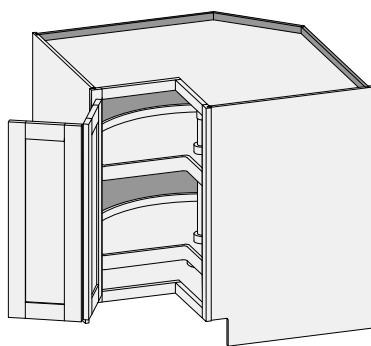


CSBCP



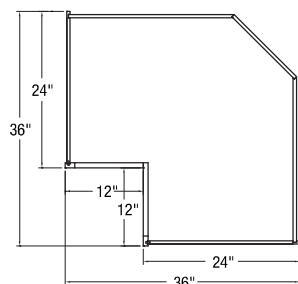
Base Options Key: EXP = Exposed End(s) FL = Flush End(s) FUE = Flush Unexposed End(s) SS = Shaped Side PFD = Prep for False Door
 EXT = Extended Stile(s) FT = Flush Toe SBR = Shaped Bottom Rail LE = Leg Extension TSS = Toe Space Side OS = Omit Shelving
 NSH = No Shelf Holes WS = Solid Wood Shelves MI = Matching Interior DT = Dust Top PTB = Plywood Toe Backer

BCPLS – Base Corner Pie Cut Lazy Susan



Custom Size Ranges
Width: 36"
Height: 34-1/2"
Depth: 36"

BCPLS3634.5

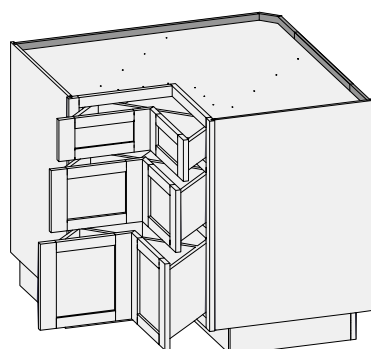


- Cabinet top and bottom is pre-drilled to accept hub assembly.
- Cabinet includes 32" diameter entry level plastic susan with two independently rotating kidney shelves mounted on a center pole.
- White susan shelves feature a self-lubricating nylon bearing and tool-free height adjustment.
- Height customization is not available due to susan size constraints.
- Minimum entry opening width required is 35" (doorways, hallways, etc.).
- When hinges are ordered in 1-1/4" and 1-3/8" overlay applications, cabinets will have their door sized as 1/2" overlay in width only.
- If hinges are not specified, 1-1/4" and 1-3/8" overlay sizing rules apply. These overlays require adequate clearance for door functionality between corner and adjacent cabinets. Use filler or extended stiles accordingly.
- Not available with inset applications.
- Optional Soss hinges available.
- Unavailable Options: SS, PFD, EXT, LE, TSS, WS.

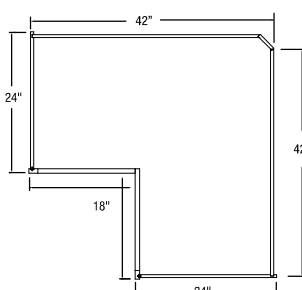
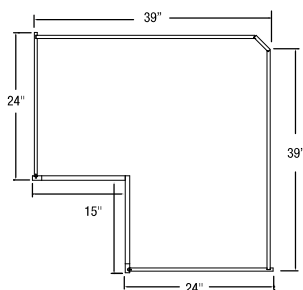
24" Deep Side

BCPLS3634.5

BCP3D/CSBCP3D – Base Corner Pie Cut Three Drawer



Custom Size Ranges
Width: 39", 42"
Height: 31-1/2" – 34-1/2"
Depth: 39", 42"



- 1-1/4" and 1-3/8" overlay applications will have their drawer fronts sized as 1/2" overlay in width only.
- Not available with inset applications.
- Not available with miter drawer front.
- Cabinet includes corner drawer boxes with back extensions.
- Each drawer front comes as two separate pieces using edge profile L-151 (45 degrees) standard to form the mitered inside corner.
- 5-piece drawer fronts, one stile on each will be 3/4" wider on the mitered edge to form the inside corner. Wide framing upcharges will apply.
- Exterior edge profiles can be specified to match adjacent cabinetry.
- Customizable in height only.
- When height changes, lower opening height changes. Upper and middle opening heights fixed at 5" and 8".
- Separate 4" high toe platform is standard to aid in passing through doorways.
- Minimum entry opening with width required is 35" (doorways, hallways, etc.).
- Unavailable Options: SS, PFD, EXT, LE, TSS, WS.

24" Deep Side

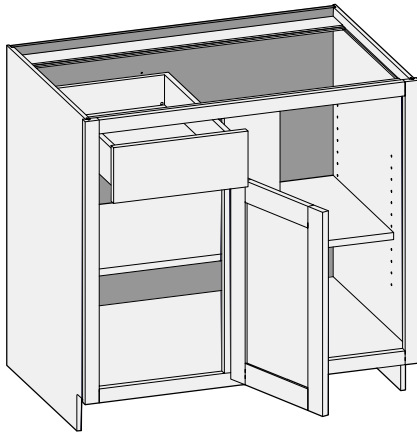
BCP3D3934.5

BCP3D4234.5

Base Options Key: EXP = Exposed End(s) FL = Flush End(s) FUE = Flush Unexposed End(s) SS = Shaped Side PFD = Prep for False Door
EXT = Extended Stile(s) FT = Flush Toe SBR = Shaped Bottom Rail LE = Leg Extension TSS = Toe Space Side OS = Omit Shelving
NSH = No Shelf Holes WS = Solid Wood Shelves MI = Matching Interior DT = Dust Top PTB = Plywood Toe Backer

BBCR/CSBBCR – Base Blind Cabinet Blind Right

Custom Size Ranges
 Width: 36" – 48"
 Height: 31-1/2" - 42"
 Depth: 12", 15", 18", 21", 24",
 27", 30"
 Functional opening: 12" – 21"



6" Center Stile

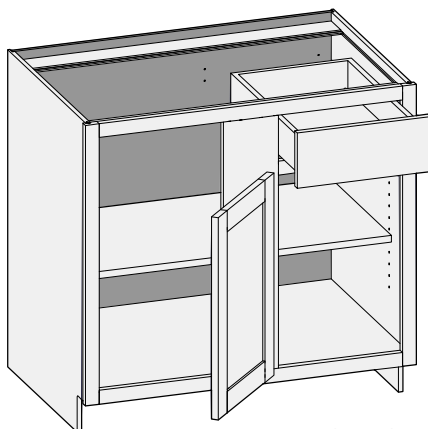
- Overall cabinet size is the actual width specified.
- Blind section is on the right.
- Specify functional opening width between 12" and 21".
- Door is always hinged on center stile for all overlays.
- When height changes, lower opening height changes. Drawer height fixed at 5".
- 1-1/4" and 1-3/8" overlay use 1/2" overlay hinges.
- Door height and adjacent reveal will follow overlay specified.
- Minimum exposed blind amount for all overlays is 2-1/2" to ensure adequate clearance for adjacent door and drawer function.
- Excessive hardware projection may require a greater amount of exposed blind. Design and install accordingly.
- Unavailable Options: SS and TSS.

24" Deep

BBCR3634.5	BBCR4534.5
BBCR3934.5	BBCR4834.5
BBCR4234.5	

BBCL/CSBBCL – Base Blind Cabinet Blind Left

Custom Size Ranges
 Width: 36" – 48"
 Height: 31-1/2" - 42"
 Depth: 12", 15", 18", 21", 24",
 27", 30"
 Functional opening: 12" – 21"



6" Center Stile

- Overall cabinet size is the actual width specified.
- Blind section is on the left.
- Specify functional opening width between 12" and 21".
- Door is always hinged on center stile for all overlays.
- When height changes, lower opening height changes. Drawer height fixed at 5".
- 1-1/4" and 1-3/8" overlay use 1/2" overlay hinges.
- Door height and adjacent reveal will follow overlay specified.
- Minimum exposed blind amount for all overlays is 2-1/2" to ensure adequate clearance for adjacent door and drawer function.
- Excessive hardware projection may require a greater amount of exposed blind. Design and install accordingly.
- Unavailable Options: SS and TSS.

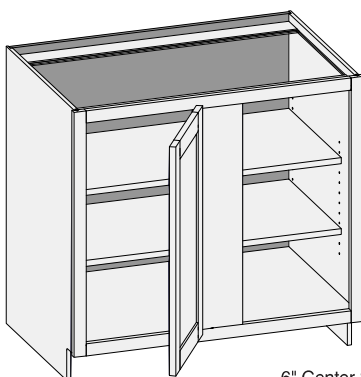
24" Deep

BBCL3634.5	BBCL4534.5
BBCL3934.5	BBCL4834.5
BBCL4234.5	

Base Options Key: EXP = Exposed End(s) FL = Flush End(s) FUE = Flush Unexposed End(s) SS = Shaped Side PFD = Prep for False Door
 EXT = Extended Stile(s) FT = Flush Toe SBR = Shaped Bottom Rail LE = Leg Extension TSS = Toe Space Side OS = Omit Shelving
 NSH = No Shelf Holes WS = Solid Wood Shelves MI = Matching Interior DT = Dust Top PTB = Plywood Toe Backer

BFDBCR/CSBFDBCR – Base Full Door Blind Cabinet Blind Right

Custom Size Ranges
Width: 36" – 48"
Height: 31-1/2" - 42"
Depth: 12" – 30"
Functional opening: 12" – 21"



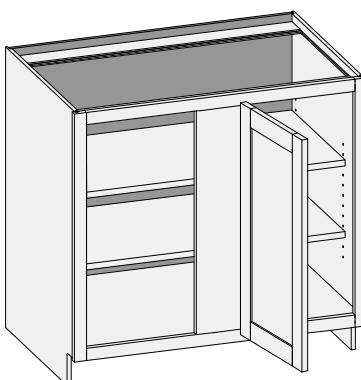
6" Center Stile

- Overall cabinet size is the actual width specified.
- Blind section is on the right.
- Specify functional opening width between 12" and 21".
- Door is always hinged on center stile for all overlays.
- 1-1/4" and 1-3/8" overlay use 1/2" overlay hinges.
- Door height and adjacent reveal will follow overlay specified.
- Minimum exposed blind amount for all overlays is 2-1/2" to ensure adequate clearance for adjacent door and drawer function.
- Excessive hardware projection may require a greater amount of exposed blind. Design and install accordingly.
- Unavailable Options: SS and TSS.

24" Deep	
BFDBCR3634.5	BFDBCR4534.5
BFDBCR3934.5	BFDBCR4834.5
BFDBCR4234.5	

BFDBCL/CSBFDBCL – Base Full Door Blind Cabinet Blind Left

Custom Size Ranges
Width: 36" – 48"
Height: 31-1/2" - 42"
Depth: 12" – 30"
Functional opening: 12" – 21"



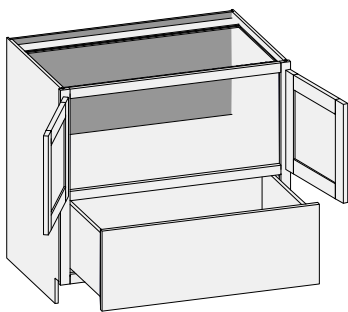
6" Center Stile

- Overall cabinet size is the actual width specified.
- Blind section is on the left.
- Specify functional opening width between 12" and 21".
- Door is always hinged on center stile for all overlays.
- 1-1/4" and 1-3/8" overlay use 1/2" overlay hinges.
- Door height and adjacent reveal will follow overlay specified.
- Minimum exposed blind amount for all overlays is 2-1/2" to ensure adequate clearance for adjacent door and drawer function.
- Excessive hardware projection may require a greater amount of exposed blind. Design and install accordingly.
- Unavailable Options: SS and TSS.

24" Deep	
BFDBCL3634.5	BFDBCL4534.5
BFDBCL3934.5	BFDBCL4834.5
BFDBCL4234.5	

Base Options Key: EXP = Exposed End(s) FL = Flush End(s) FUE = Flush Unexposed End(s) SS = Shaped Side PFD = Prep for False Door
EXT = Extended Stile(s) FT = Flush Toe SBR = Shaped Bottom Rail LE = Leg Extension TSS = Toe Space Side OS = Omit Shelving
NSH = No Shelf Holes WS = Solid Wood Shelves MI = Matching Interior DT = Dust Top PTB = Plywood Toe Backer

BCT/CSBCT - Base Cook Top w/Butt Doors

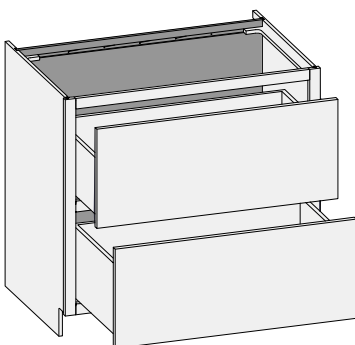


Custom Size Ranges
 Width: 30" – 42"
 Height: 31-1/2" – 42"
 Depth: 12", 15", 18",
 21", 24", 27", 30"

- When height changes, upper opening height changes, lower opening height fixed at 11-1/2".

24" Deep	
BCT3034.5BD	BCT3934.5BD
BCT3334.5BD	BCT4234.5BD
BCT3634.5BD	

CSBCT2D - Base Cook Top Two Drawer



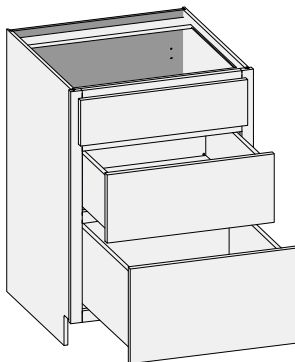
Custom Size Ranges
 Width: 36" – 48"
 Height: 34-1/2"
 Depth: 24", 27", 30"

- Designed for countertop mounted professional-style cooktops (non-downdraft ventilation units).
- Cabinet back recessed 3" to accommodate and conceal supply lines. Drawer box depth is 3" less due to the recessed back.
- Top drawer box is 8" high to accommodate appliance housing. Bottom drawer box is 10" high.

7

Advantage Base Cabinets

BR3D/CSBR3D - Base Range Three Drawer



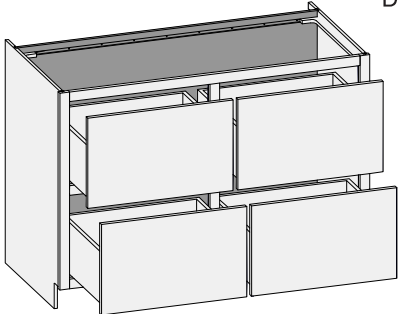
Custom Size Ranges
 Width: 30" – 39"
 Height: 31-1/2" – 34-1/2"
 Depth: 12", 15", 18",
 21", 24", 27", 30"

- False top drawer front.
- When height changes, lower opening height changes. Upper drawer and middle opening heights fixed at 5" and 8".

24" Deep
BR3D3034.5
BR3D3634.5

Base Options Key: EXP = Exposed End(s) FL = Flush End(s) FUE = Flush Unexposed End(s) SS = Shaped Side PFD = Prep for False Door
 EXT = Extended Stile(s) FT = Flush Toe SBR = Shaped Bottom Rail LE = Leg Extension TSS = Toe Space Side OS = Omit Shelving
 NSH = No Shelf Holes WS = Solid Wood Shelves MI = Matching Interior DT = Dust Top PTB = Plywood Toe Backer

CSBCT4D - Base Cook Top Four Drawer



Custom Size Ranges

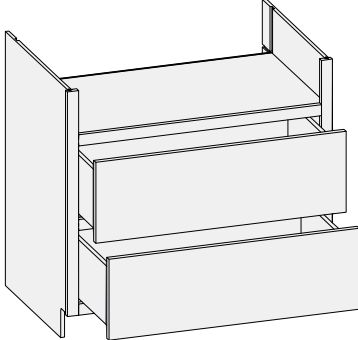
Width: 36" – 60"

Height: 34-1/2"

Depth: 24", 27", 30"

- Designed for countertop mounted professional-style cooktops (non-downdraft ventilation units).
- When cabinet width changes, drawer front widths remain equal.
- Cabinet back recessed 3" to accommodate and conceal supply lines. Drawer box depth is 3" less due to the recessed back.
- Top drawer box is 8" high to accommodate appliance housing. Bottom drawer box is 10" high.

BRT2D/CSBRT2D - Base Range Top Two Drawer



Custom Size Ranges

Width: 36" – 48"

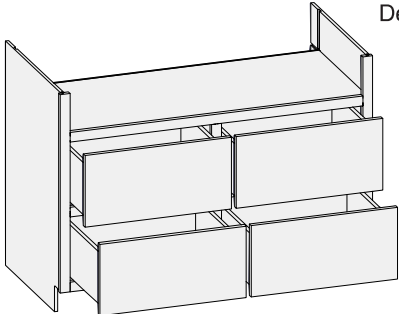
Height: 34-1/2"

Depth: 24", 27", 30"

- Designed for professional-style cooktop units.
- 6" high standard opening includes full floor to support appliance. Opening height is customizable from 5" to 8" in 1/16" increments.
- Cabinet back recessed 3" to accommodate and conceal supply lines. Drawer box depth is 3" less due to the recessed back.
- Both drawer boxes are 8" high.

24" Deep	
BRT2D3634.5	BRT2D4534.5
BRT2D3934.5	BRT2D4834.5
BRT2D4234.5	

CSBRT4D - Base Range Top Four Drawer



Custom Size Ranges

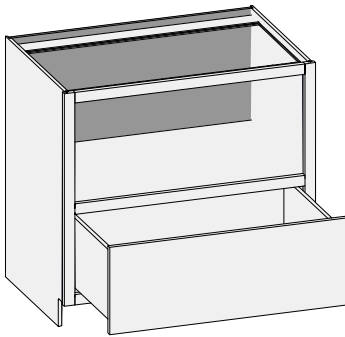
Width: 36" – 60"

Height: 34-1/2"

Depth: 24", 27", 30"

- Designed for professional-style cooktop units.
- 6" high standard opening includes full floor to support appliance. Opening height is customizable from 5" to 8" in 1/16" increments.
- When cabinet width changes, all drawer widths remain equal.
- Cabinet back is recessed 3" to conceal supply lines. Drawer box depth is also 3" less due to the recessed back.
- All drawer boxes are 8" high.

Base Options Key: EXP = Exposed End(s) FL = Flush End(s) FUE = Flush Unexposed End(s) SS = Shaped Side PFD = Prep for False Door
 EXT = Extended Stile(s) FT = Flush Toe SBR = Shaped Bottom Rail LE = Leg Extension TSS = Toe Space Side OS = Omit Shelving
 NSH = No Shelf Holes WS = Solid Wood Shelves MI = Matching Interior DT = Dust Top PTB = Plywood Toe Backer

BUCM/CSBUM - Base Under Counter Microwave


Custom Size Ranges
 Width: 24" – 36"
 Height: 31-1/2" – 42"
 Depth: 12", 15", 18",
 21", 24", 27", 30"

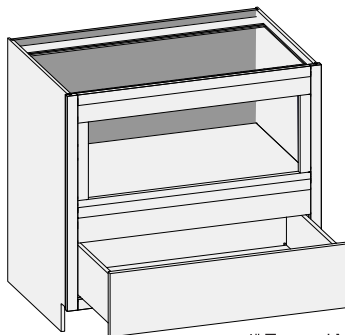
- For 34-1/2" high cabinets, top opening height is 15-3/4".
- When height changes, upper opening height changes. Lower opening height fixed at 10-1/4".

24" Deep

BUCM2434.5

BUCM2734.5

BUCM3034.5

BIUCM/CSBIUCM - Built-In Under Counter Microwave


4" Top and Middle Rails

Custom Size Ranges
 Width: 24" – 36"
 Height: 31-1/2" – 42"
 Depth: 12", 15", 18",
 21", 24", 27", 30"

- Microwave opening is 13" high, width is 6" less than cabinet width.
- Microwave opening is trimmable up to 5" in height and 3" in width.
- For 34-1/2" high cabinets, top opening height is 13".
- When height changes, upper opening height changes. Lower opening height fixed at 8".

24" Deep

BIUCM2734.5

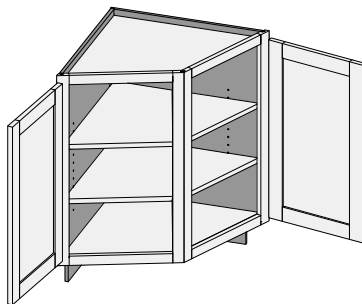
BIUCM3334.5

BIUCM3034.5

BIUCM3634.5

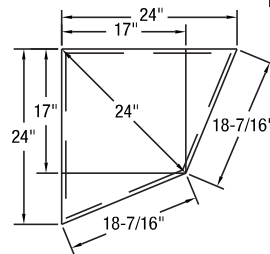
7

Advantage Base Cabinets

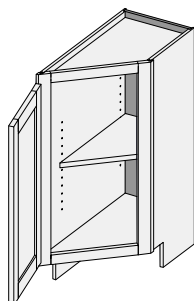
BAE/CSBAE - Base Angle End


Custom Size Ranges
 Width: 24"
 Height: 31-1/2" – 42"
 Depth: 24"

- Two 15" wide openings.
- 1-13/16" wide stiles outside, 1-5/8" wide stiles inside.
- Unavailable Options: EXP, FL, FUE, SS, PFD, EXT, SBR, LE, TSS.


24" Deep

BAE2434.5

BEAR(L)/CSBEAR(L) - Base End Angle Right (or Left)


Custom Size Ranges
 Width: 12"
 Height: 31-1/2" – 42"
 Depth: 24"

- Units are reversible right or left (right shown).
- 1-13/16" stile face width.
- Flush end available on 12-1/2" deep side.
- Exposed end available on 24" deep side.
- Unavailable Options: SS, PFD, EXT, SBR, LE, TSS.

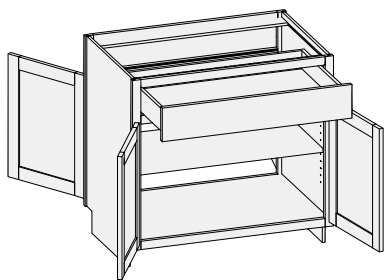
24" Deep

BEAL1234.5

BEAR1234.5

Base Options Key: EXP = Exposed End(s) FL = Flush End(s) FUE = Flush Unexposed End(s) SS = Shaped Side PFD = Prep for False Door
 EXT = Extended Stile(s) FT = Flush Toe SBR = Shaped Bottom Rail LE = Leg Extension TSS = Toe Space Side OS = Omit Shelving
 NSH = No Shelf Holes WS = Solid Wood Shelves MI = Matching Interior DT = Dust Top PTB = Plywood Toe Backer

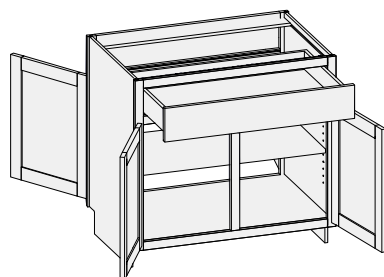
CSBDE - Base Double Entry w/Butt Doors



Custom Size Ranges
Width: 24" – 36"
Height: 31-1/2" – 42"
Depth: 12", 15", 18",
21", 24", 27", 30"

- One false drawer front on one side, functional top drawer on opposite side.
- When height changes, lower opening height changes. Drawer height fixed at 5".
- Specify single or butt doors on custom size cabinets 24" wide.
- Unavailable Options: LE and WS.

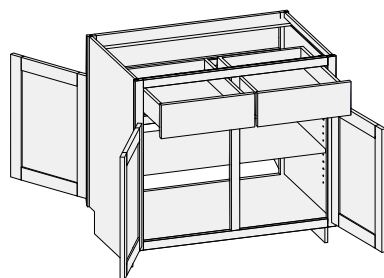
CSBDE2D1D - Base Double Entry Two Door One Drawer



Custom Size Ranges
Width: 27" – 36"
Height: 31-1/2" – 42"
Depth: 12", 15", 18",
21", 24", 27", 30"

- One false drawer front on one side, functional top drawer on opposite side.
- When height changes, lower opening height changes. Drawer height fixed at 5".
- Unavailable Options: LE and WS.

BDE/CSBDECS - Base Double Entry w/Center Stile

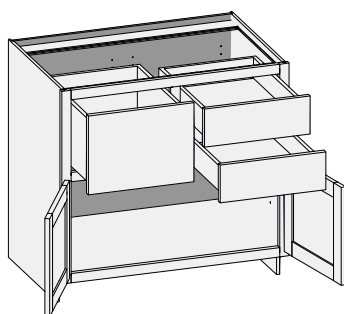


Custom Size Ranges
Width: 30" – 48"
Height: 31-1/2" – 42"
Depth: 12", 15", 18",
21", 24", 27", 30"

- Two false drawer fronts on one side, functional top drawers on opposite side.
- When height changes, lower opening height changes. Drawer height fixed at 5".
- Unavailable Options: LE and WS.

24" Deep	
BDE3034.5	BDE4234.5
BDE3634.5	BDE4834.5

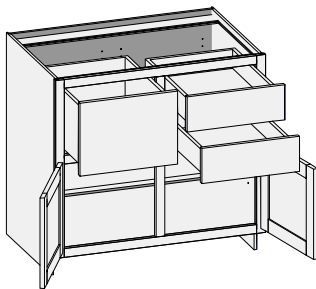
CSBC3DL - Base Combo Three Drawer Left w/Butt Doors



Custom Size Ranges
Width: 24" – 36"
Height: 31-1/2" – 42"
Depth: 12", 15", 18",
21", 24", 27", 30"

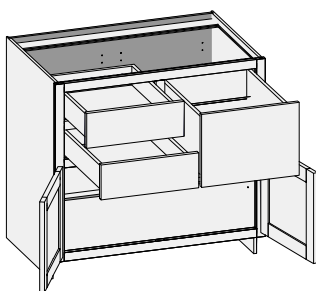
- When height changes, lower opening height changes. Drawer opening height fixed at 5" and 11-1/2".
- When width changes, drawer opening widths remain equal.

Base Options Key: EXP = Exposed End(s) FL = Flush End(s) FUE = Flush Unexposed End(s) SS = Shaped Side PFD = Prep for False Door
EXT = Extended Stile(s) FT = Flush Toe SBR = Shaped Bottom Rail LE = Leg Extension TSS = Toe Space Side OS = Omit Shelving
NSH = No Shelf Holes WS = Solid Wood Shelves MI = Matching Interior DT = Dust Top PTB = Plywood Toe Backer

CSBC3DLCS - Base Combo Three Drawer Left w/Center Stile


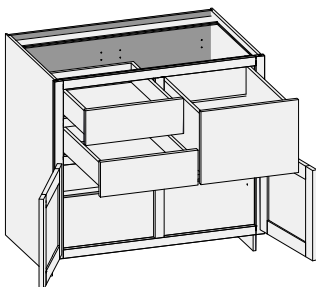
Custom Size Ranges
 Width: 27" – 48"
 Height: 31-1/2" – 42"
 Depth: 12", 15", 18",
 21", 24", 27", 30"

- When height changes, lower opening height changes. Drawer opening height is fixed at 5" and 11-1/2".
- When width changes, drawer opening widths remain equal.

CSBC3DR - Base Combo Three Drawer Right w/Butt Doors


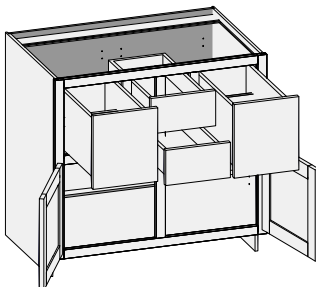
Custom Size Ranges
 Width: 24" – 36"
 Height: 31-1/2" – 42"
 Depth: 12", 15", 18",
 21", 24", 27", 30"

- When height changes, lower opening height changes. Drawer opening height is fixed at 5" and 11-1/2".
- When width changes, drawer opening widths remain equal.

CSBC3DRCS - Base Combo Three Drawer Right w/Center Stile


Custom Size Ranges
 Width: 27" – 48"
 Height: 31-1/2" – 42"
 Depth: 12", 15", 18",
 21", 24", 27", 30"

- When height changes, lower opening height changes. Drawer opening height is fixed at 5" and 11-1/2".
- When width changes, drawer opening widths remain equal.

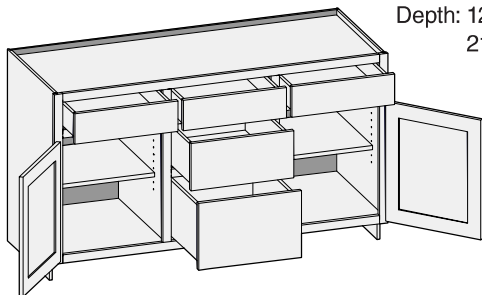
CSBC4DCS - Base Combo Four Drawer


Custom Size Ranges
 Width: 36" – 48"
 Height: 31-1/2" – 42"
 Depth: 12", 15", 18",
 21", 24", 27", 30"

- When height changes, lower opening height changes. Drawer opening height is fixed at 5" and 11-1/2".
- When width changes, drawer opening widths remain equal.

Base Options Key: EXP = Exposed End(s) FL = Flush End(s) FUE = Flush Unexposed End(s) SS = Shaped Side PFD = Prep for False Door
 EXT = Extended Stile(s) FT = Flush Toe SBR = Shaped Bottom Rail LE = Leg Extension TSS = Toe Space Side OS = Omit Shelving
 NSH = No Shelf Holes WS = Solid Wood Shelves MI = Matching Interior DT = Dust Top PTB = Plywood Toe Backer

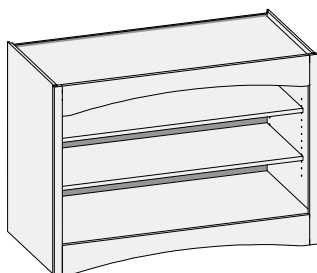
CSB2D5D - Base Two Door Five Drawer



Custom Size Ranges
Width: 48" – 96"
Height: 31-1/2" – 34-1/2"
Depth: 12", 15", 18"
21", 24", 27", 30"

- Cabinet widths 48" to 72" have two doors; widths 60" to 96" have four butt doors.
- When height changes, lower opening heights change. Top drawer opening height fixed at 5". Middle drawer opening height fixed at 8".
- Doors hinged on center stile require 1/2" overlay hinges for 1-1/4" or 1-3/8" overlays.
- When width changes, all openings are configured equally.
- Fixed vertical partitions with independently adjustable shelves.
- Unavailable Option: PFD

CSBOU - Base Open Unit



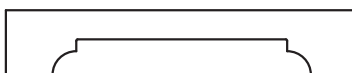
CWS4 – Roman Arch shown

Custom Size Ranges
Width: 15" – 48"
Height: 31-1/2" – 48"
Depth: 5-1/2" – 30"

- Available with valance designs on top and bottom rails. To order specify using CWS designations associated with the valance design.
- Top and bottom rails are 5-1/2" high for all valance designs and Flush Toe Option.
- If no valance design is selected, top rail is 1-1/2" high.
- When a toe kick is selected, bottom rail is 1-1/2" high.
- Minimum width is 15".
- Unavailable Option: WS.



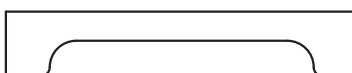
CWS4 – Roman Arch



CWS6 – Elegant Arch

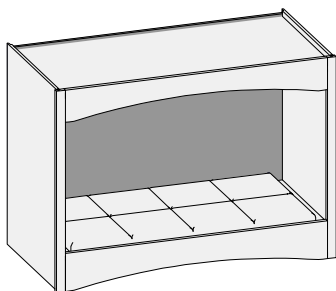


CWS5 – Classic Arch



CWS7 – Traditional Arch

CSBPU - Base Pet Unit



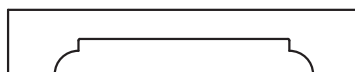
CWS4 – Roman Arch shown

Custom Size Ranges
 Width: 30" – 48"
 Height: 31-1/2" – 48"
 Depth: 15" – 24"

- Available with valance designs on top and bottom rails. To order specify using CWS designations associated with the valance design.
- Top rail is 5-1/2" for all valance designs.
- If no valance design is selected, top rail is 1-1/2" high.
- Bottom rail is 6-1/2" high for all valance designs and Flush Toe Option. 1" rail extension provides a lip to keep pet bed in place (pet bed not included).
- When a toe kick is selected, bottom rail is 2-1/2" high.
- Minimum width is 15".



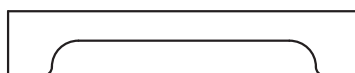
CWS4 – Roman Arch



CWS6 – Elegant Arch

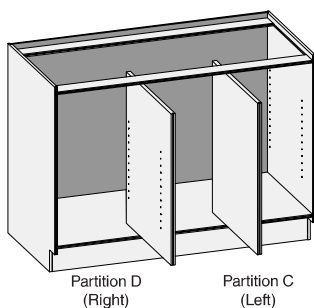


CWS5 – Classic Arch



CWS7 – Traditional Arch

CSBCO - Base Case Only Cabinet

Partition D
(Right)Partition C
(Left)

Custom Size Ranges
 Width: 9" – 96"
 Height: 8" – 48"
 Depth: 8" – 30"

- Customizable cabinet case for custom base applications.
- Sides are machined with shelf holes.
- Optional partitions are sized to fit between top stringers and bottom of cabinet. Self-tapping screws are provided to secure partition into place. Specify quantity of each style partition required.
 - Partition A has no shelf holes.
 - Partition B has thru holes.
 - Partition C has shelf holes on the left side. (Pairs with the right cabinet side).
 - Partition D has shelf holes on the right side. (Pairs with the Left cabinet side).
- Specify shelf quantity per cabinet and length of each shelf. Up to 4 different shelf lengths can be specified. Shelf depth is calculated automatically by the system.
- Order 1/2 overlay hinge kit #2100150A when mounting doors on a center stile.