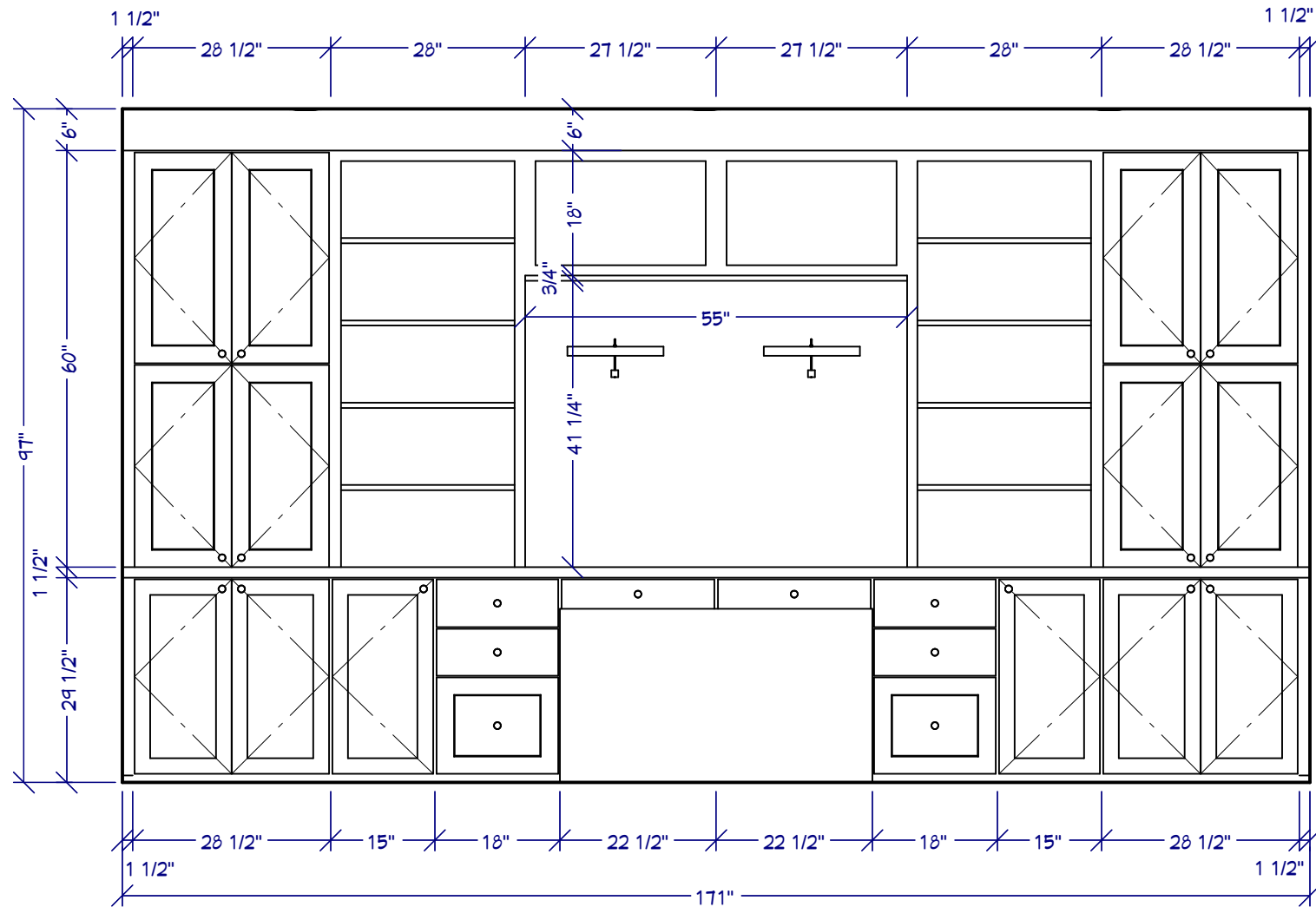


Schedule A: Full Overlay, Albany Door & Drawer Front, MDF, Arctic White Colourtone

	ITEM CODE	WIDTH	HEIGHT	DEPTH	CABINET DESCRIPTION	CABINET OPTIONS/ACCESSORIES
A1	CSWAC_BD	28 1/2"	60"	16"	wall appliance cabinet butt doors	EXTL
A2	CSWOBS	28"	60"	16"	wall open book shelf	FLR, MI
A3	CSWOU	27 1/2"	18"	16"	wall open unit	MI
A4	CSWOU	27 1/2"	18"	16"	wall open unit	MI
A5	CSWOBS	28"	60"	16"	wall open book shelf	FLL, MI
A6	CSWAC_BD	28 1/2"	60"	16"	wall appliance cabinet butt doors	EXTR
A7	CSDBFD_BD	28 1/2"	29 1/2"	24"	desk base full door butt doors	EXTL
A8	CSDBFD	15"	29 1/2"	24"	desk base full door	
A9	CSDB3D	18"	29 1/2"	24"	desk base three drawer	FLR
A10	CSDD	22 1/2"	4 1/2"	24"	desk drawer	
A11	CSDD	22 1/2"	4 1/2"	24"	desk drawer	
A12	CSDB3D	18"	29 1/2"	24"	desk base three drawer	FLL
A13	CSDBFD	15"	29 1/2"	24"	desk base full door	
A14	CSDBFD_BD	28 1/2"	29 1/2"	24"	desk base full door butt doors	EXTR
A15	Plywood	55"	3/4"	16 1/4"	finished bottom plywood panel	edgebanding
A16					6" Slab for Crown Moulding	lengths TBD by Cabinet Coach

Cabinet Options/Accessories Abbreviation Key: BPO(Base Pull Out) - CF(Custom Frame) - CTR(Custom Top Reveal) - CBR(Custom Bottom Reveal) - DT(Dust Top) - EXTL(Extended Stile Left) - EXTR(Extended Stile Right) - EXTB(Extended Stile Both) - FLL(Flush End Left) - FLR(Flush End Right) - FLB(Flush End Both) - F/O(Frame Only) - FT(Flush Toe) - LEL(Leg Extension Left) - LER(Leg Extension Right) - LEB(Leg Extension Both) - MI(Matching Interior) - ND(No Doors) - OS(Omit Shelves) - NSH(No Shelf Holes) - POT(Pull out Tray) - PFDL(Prep False Door Left) - PFDR(Prep False Door Right) - PFDB (Prep False Door Both) - TPO(Trash Pull-Out) - TSS(Toe Space Side) - SBR(Shaped Bottom Rail)



Thank you for your interest in our design services! We look forward to completing this project with you!

Step 1: Review your design and compile a list of questions to discuss with your Cabinet Coach.

Some things to do/consider as you review your layout:

- Measure your space again to ensure proper room dimensions were shown on the drawing.
- Double-check your measurements for ALL window and door openings. Be sure to account for the width of trim in your window/door measurements.
- Which cabinet sides will be visible and therefore require a finished end?
- Do you have uneven floors or ceilings? If so, be sure to account for those differences as you determine your cabinet heights.
- Are there room obstructions? (i.e. soffits, plumbing, vents, duct work, etc.) Be sure to note them on your drawing.

Step 2: After your questions have been answered by your Cabinet Coach, please submit a numbered list of changes for updating your design/quote.

Example list of revisions:

1. Change Cabinet #4 from a B18 to a B3D18
2. Change the wall cabinet height to 36"
3. Make Cabinet #12 a Trash Pull-Out
4. Please add a 30" pantry to the right of Cabinet #2
5. Add lightrail B11

IMPORTANT: Your first set of revisions are complimentary. Additional revisions will result in an automatic upgrade from a Basic Design to a Premium Design for an additional fee (\$150 minimum). Subsequent revisions will be invoiced at \$80/hour.

For customers interested in speaking directly with a designer, we now offer a Design Consultation. Rates are \$150 for 30-minutes or \$300 for 60-minutes. Ask your Cabinet Coach how to get started.

Disclaimer: This design is the result of information that you, the customer, have provided to Cabinet Joint for the purpose of visualizing your cabinet layout before placing an order. It is the sole responsibility of the customer to verify all room dimensions, cabinet sizes, and appliance openings before placing that order. If you would prefer to consult with a designer for a more detailed and customized drawing, we suggest you speak with your cabinet coach about our Design Consultation or Pro Design services.