

Schedule A - Kitchen Perimeter: Flush Inset; Albany Doors & Drawer Fronts (top Slab); Antique White Colourtone						
	CWS CODE	WIDTH	HEIGHT	DEPTH	DESCRIPTION	COMMENTS
A1	CSEP	1 1/2"	84"	24"	end panel	FLL
A2	CSW2CS	67 1/2"	29 1/2"	24"	wall butt doors	FLL
A3	CSW_BD	16 1/2"	29 1/2"	24"	wall butt doors	EXTR
A4	CSUC (carcass only)	16 1/2"	84"	24"	utility cabinet single door	CF, FT, EXTR
A5	CSW_BD	33"	18 3/4"	15"	wall butt doors	FLB, F/O Doors
A6	CSWAC BD (carcass only)	33"	59"	15"	wall appliance cabinet butt doors	CF, FLB
A7	CSTTW	15"	60"	12 1/2"	two-tiered wall	FLR, F/O Top Door
A8	CSW2CS (carcass only)	54"	47"	15"	custom rangehood	CF, MI, NS, NSH, FLB
A9	CSTTW	15"	60"	12 1/2"	two-tiered wall	FLL, F/O Top Door
A10	CSW_BD	33"	18 3/4"	24"	wall butt doors	FLB, F/O Doors
A11	CSCO	33"	94 3/4"	24"	custom oven cabinet	CF, FLB
A12	CSB3D	33"	34 1/2"	24"	base three drawer	FLL
A13	CSB_BD	18"	34 1/2"	24"	standard base butt doors	
A14	CSCO	48"	34 1/2"	24"	rangetop cabinet	CF
A15	CSB_BD	18"	34 1/2"	24"	standard base butt doors	
A16	CSW_BD	30"	18 3/4"	18"	wall butt doors	FLR, F/O Doors
A17	CSWOBS BD (carcass only)	30"	59"	18"	custom pocket door cabinet	CF, FLR
A18	CSW_BD	30"	18 3/4"	18"	wall butt doors	FLL, F/O Doors
A19	CSWOBS BD (carcass only)	30"	59"	18"	custom pocket door cabinet	CF, FLL
A20	CSB2D5D	60"	34 1/2"	24"	base two door 5 drawer	FLB
A21					Crown 1524	lengths TBD by Cabinet Coach
A22					4" Slab Crown Backer	lengths TBD by Cabinet Coach
A23					Toekick Material	lengths TBD by Cabinet Coach

Schedule B - Island: Flush Inset; Albany Door & Drawerfront (top Slab); Quartersawn White Oak; Clearcoat, 10% Sheen						
	CWS CODE	WIDTH	HEIGHT	DEPTH	DESCRIPTION	COMMENTS
B1	DWEP	1 1/2 "	34 1/2"	24"	dish washer end panel	flipped to receive island end panel
B2	Custom Door				beverage refrigerator panel	sized to specifications
B3	DWEP	1 1/2"	34 1/2"	24"	dish washer end panel	
B4	Custom Door				ice maker panel	sized to specifications
B5	CSASB CS	39"	34 1/2"	24"	apron sink base center stile	
B6	Custom Door				dishwasher panel	sized to specifications
B7	CSB3DEH	24"	34 1/2"	24"	base three drawer equal height	1/2" EXTR, LER
B8	Custom Frame/Doors	46 1/2"	34 1/2"	3/4 "	integrated end panel	
B10	CSBFD_BD	32 3/16"	34 1/2"	24"	base full door butt doors	FT
B11	CSBFD_BD	32 3/16"	34 1/2"	24"	base full door butt doors	FT
B12	CSBFD_BD	32 3/16"	34 1/2"	24"	base full door butt doors	FT
B13	CSBFD_BD	32 3/16"	34 1/2"	24"	base full door butt doors	1/2" EXTR, FT
B14	Custom Frame/Doors	46 1/2"	34 1/2"	3/4 "	integrated end panel	
B15	(Qty.02) Floating Shelves	60"	2 1/2"	10"	quartersawn white oak shelving	pantry
B16					Toekick Material	lengths TBD by Cabinet Coach

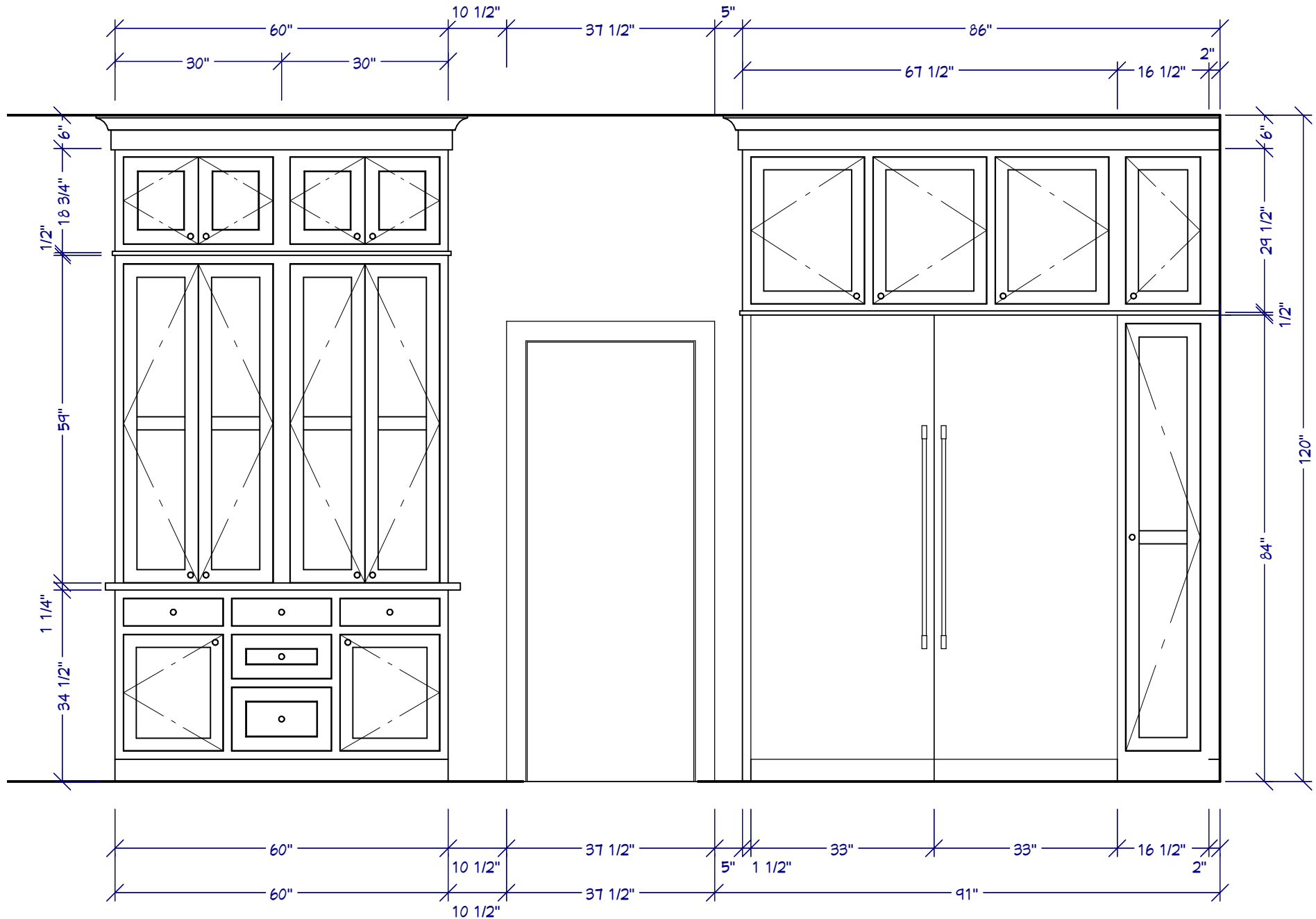
Schedule C - Pantry: Flush Inset; Albany Door & Drawer Front (top Slab);MDF; Fern Colourtone						
	CWS CODE	WIDTH	HEIGHT	DEPTH	DESCRIPTION	COMMENTS
C1	CSTTW CS	37"	60"	12 1/2"	two-tiered wall center stile	EXTL, FLR, F/O Top Doors
C2	CSTTW CS	37"	60"	12 1/2"	two-tiered wall center stile	EXTR, FLL, F/O Top Doors
C3	CSBFD CS	37"	34 1/2"	18"	base full door center stile	FT, EXTL
C4	CSBFD CS	37"	34 1/2"	18"	base full door center stile	FT
C5	CSBFD CS	37"	34 1/2"	18"	base full door center stile	FT
C6	CSBFD CS	37"	34 1/2"	18"	base full door center stile	FT, EXTR
C7					Crown 1524	lengths TBD by Cabinet Coach
C8					4" Slab Crown Backer	lengths TBD by Cabinet Coach
C9					Toekick Material	lengths TBD by Cabinet Coach

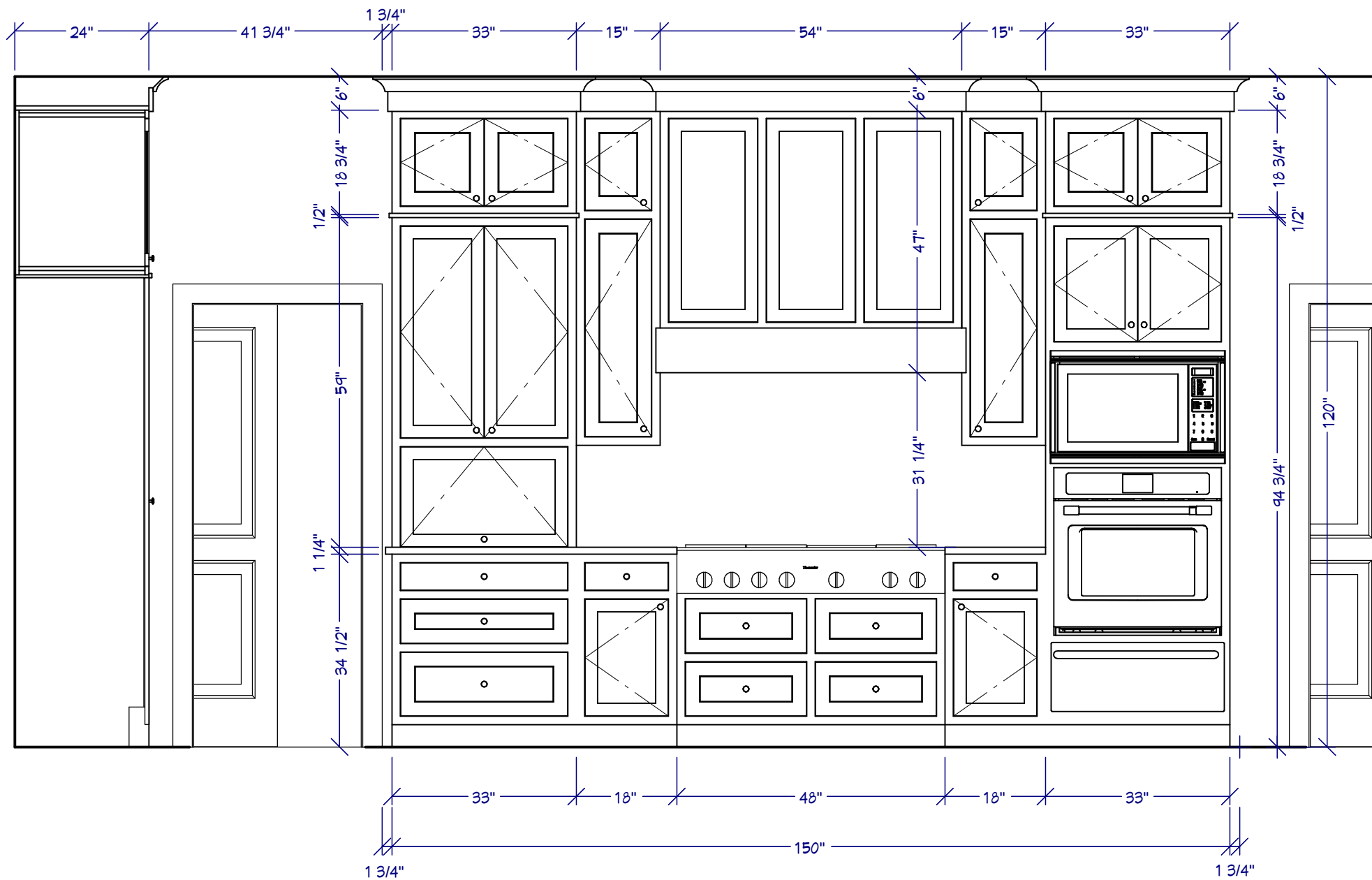
Schedule D - Laundry: Flush Inset; Albany Door & Drawer Front (top Slab); MDF; Hearthstone Grey Colourtone						
	CWS CODE	WIDTH	HEIGHT	DEPTH	DESCRIPTION	COMMENTS
D1	CSRTBBD top cabinet 20 1/4"h	30"	94 3/4"	30"	refrigerator tall both butt doors	EXTL, FLR
D2	CSW_BD	30"	18 3/4"	30"	wall_butt doors	EXTL, FLR
D3	CSTTW BD	25 7/8"	60"	12 1/2"	two-tiered wall butt doors	FLL
D4	CSTTW BD	25 7/8"	60"	12 1/2"	two-tiered wall butt doors	
D5	CSBS BD	26"	34 1/2"	24"	base sink butt doors	EXTR
D6	CSBFD BD	25 7/8"	34 1/2"	12 1/2"	base full door butt doors	EXTL
D7	CSBFD BD	25 7/8"	34 1/2"	12 1/2"	base full door butt doors	
D8	(Qty.03) Floating Shelf	40"	2 1/2"	10"	shelving	
D9	(Qty.03) Floating Shelf	15 1/2"	2 1/2"	10"	shelving	
D10					Crown 1524	lengths TBD by Cabinet Coach
D11					4" Slab Crown Backer	lengths TBD by Cabinet Coach
D12					Toekick Material	lengths TBD by Cabinet Coach

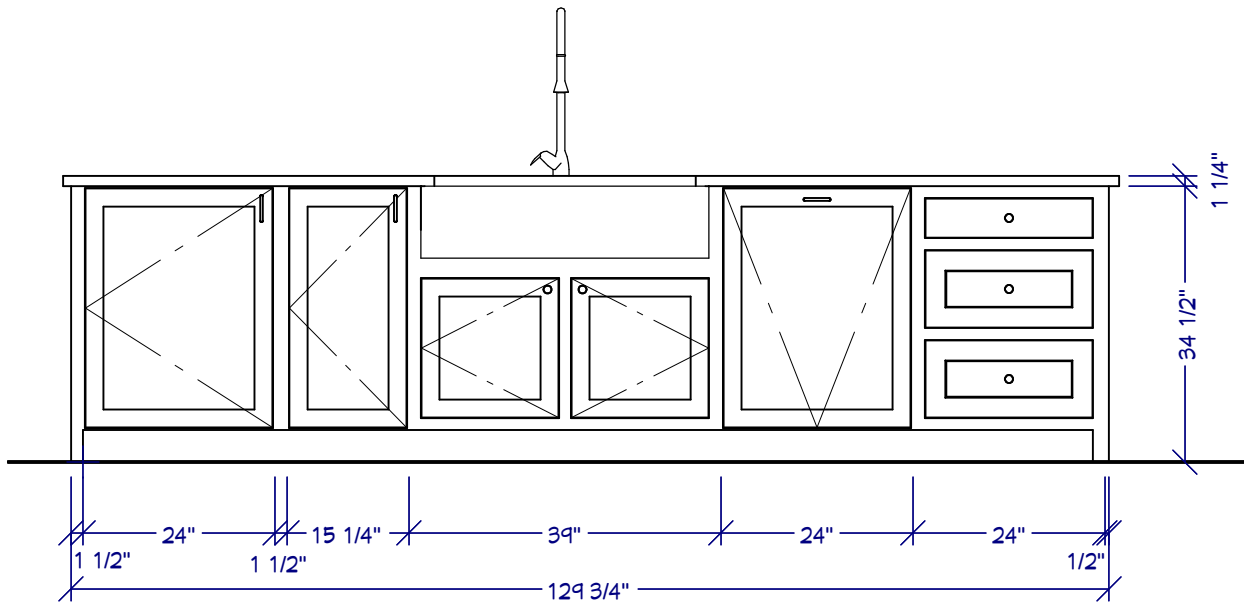
Cabinet Options/Accessories Abbreviation Key: BPO(Base Pull Out) - CF(Custom Frame) - CTR(Custom Top Reveal) - CBR(Custom Bottom Reveal) - DT(Dust Top) - EXTL(Extended Stile Left) - EXTR(Extended Stile Right) - EXTB(Extended Stile Both) - FLL(Flush End Left) - FLR(Flush End Right) - FLB(Flush End Both) - F/O(Frame Only) - FT(Flush Toe) - LEL(Leg Extension Left) - LER(Leg Extension Right) - LEB(Leg Extension Both) - MI(Matching Interior) - ND(No Doors) - OS(Omit Shelves) - NSH(No Shelf Holes) - POT(Pull out Tray) - PFDL(Prep False Door Left) - PFDR(Prep False Door Right) - PFDB (Prep False Door Both) - TPO(Trash Pull-Out) - TSS(Toe Space Side) - SBR(Shaped Bottom Rail)

ELEVATION 1

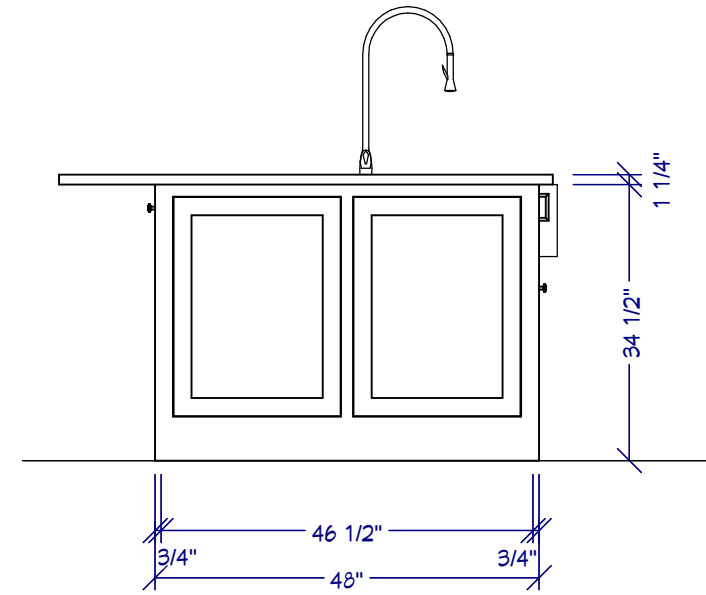
Refrigerator Wall



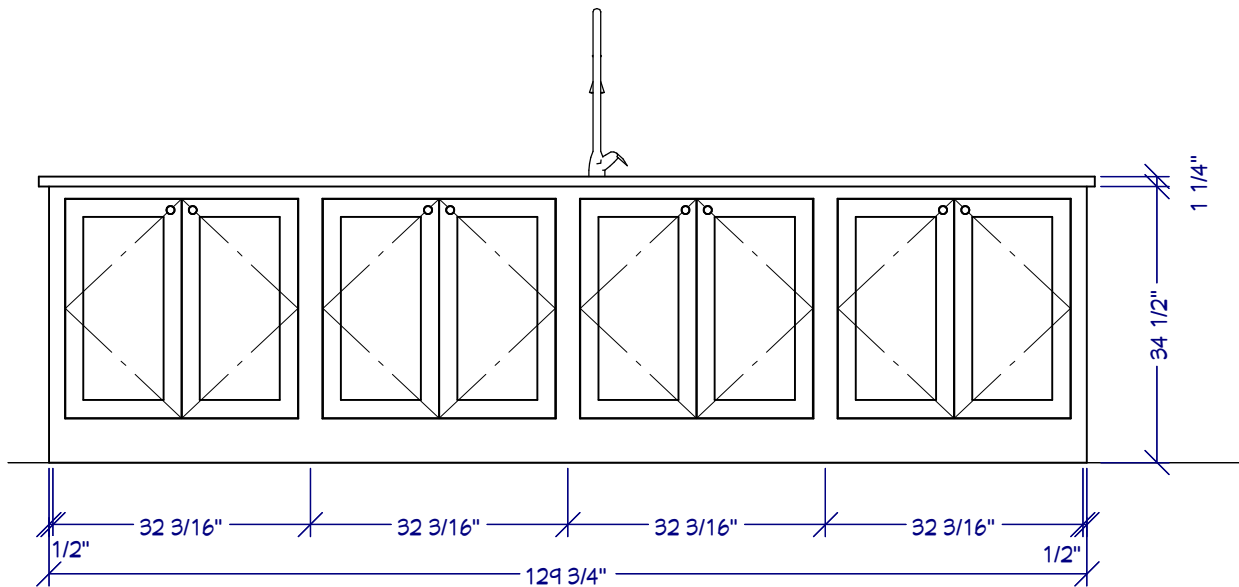
ELEVATION 2
Range Wall



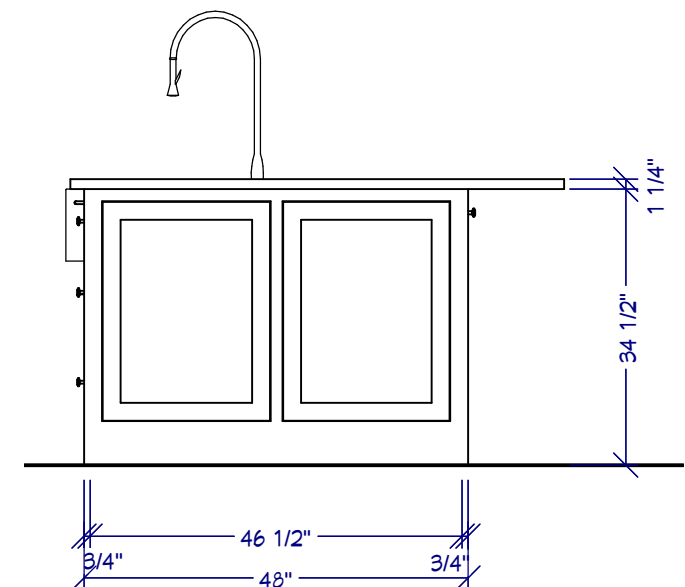
ELEVATION 3



ELEVATION 5

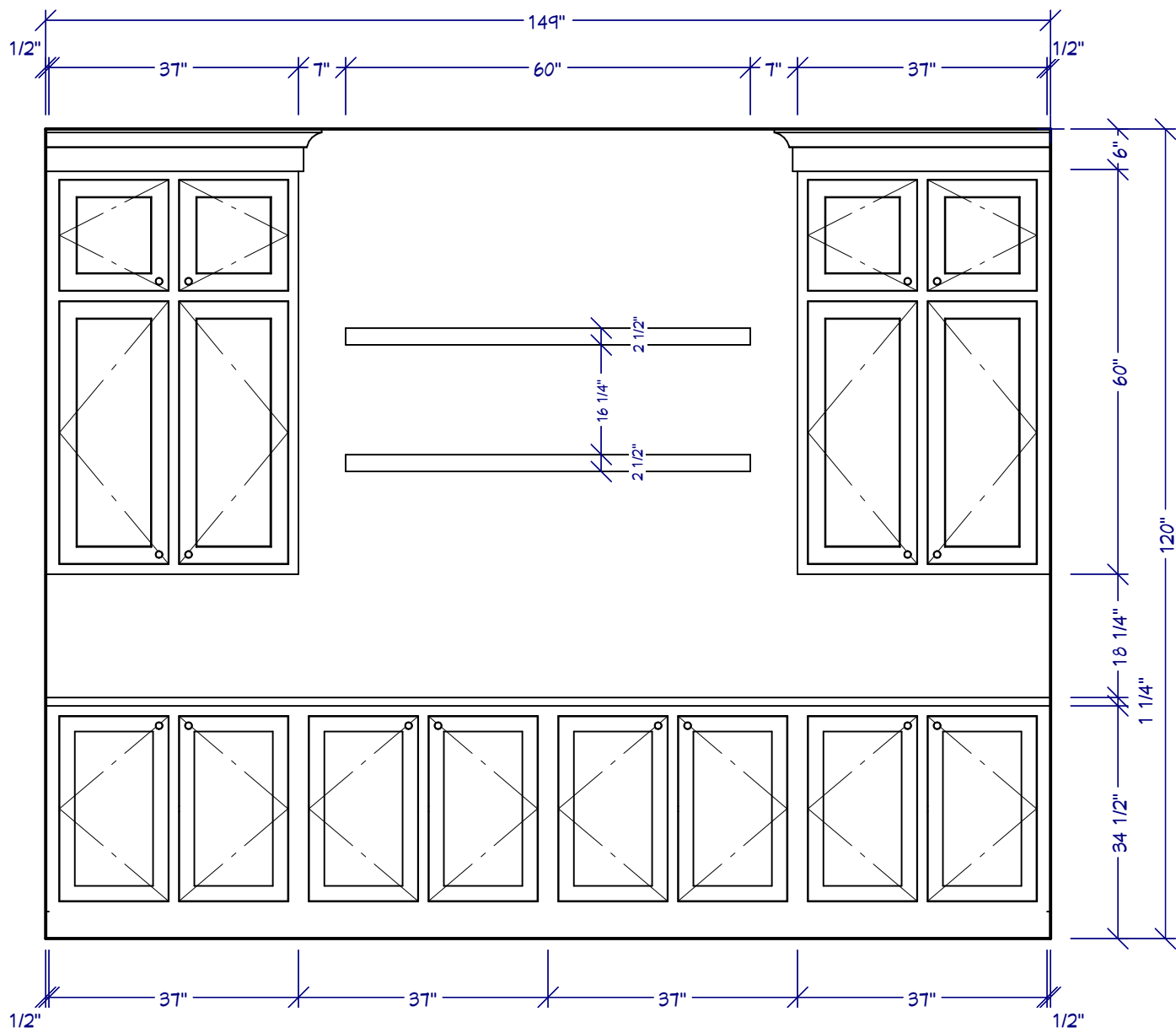


ELEVATION 4



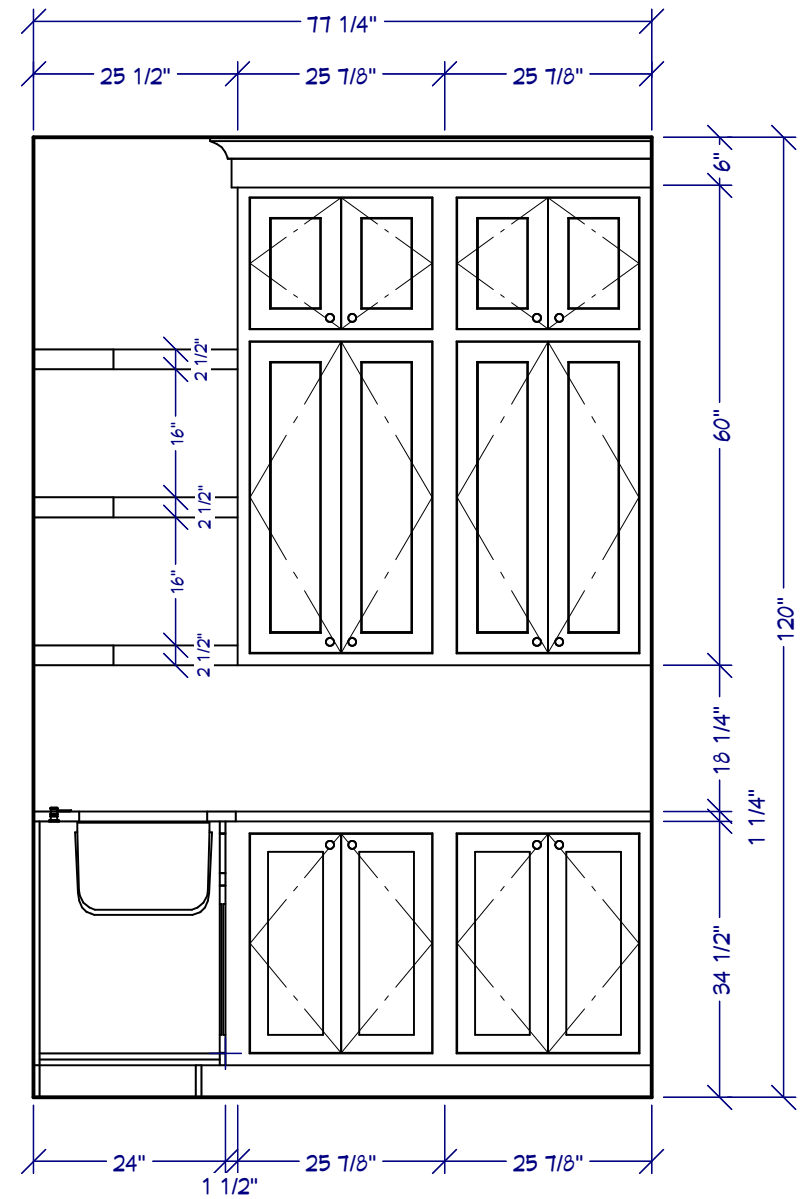
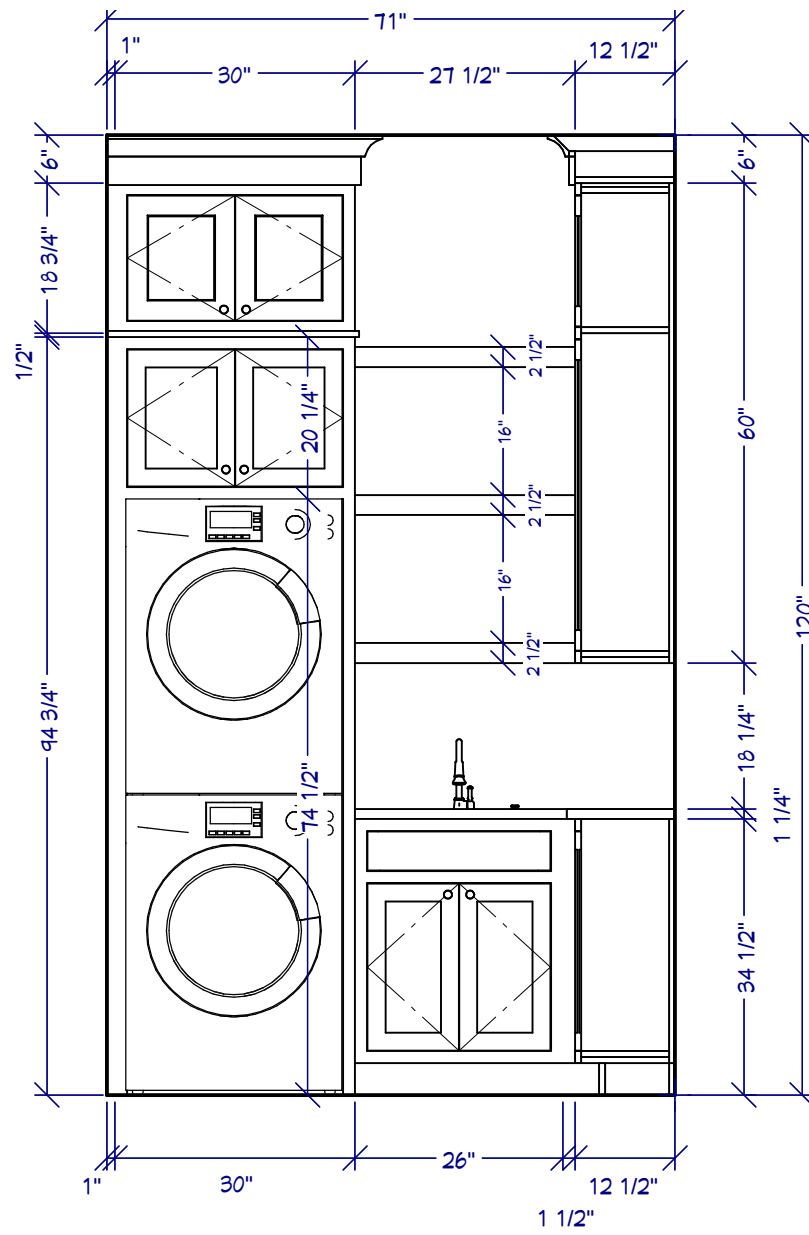
ELEVATION 6

ELEVATION 7
Pantry



ELEVATIONS 8 & 9

Laundry



Thank you for your interest in our design services! We look forward to completing this project with you!

Step 1: Review your design and compile a list of questions to discuss with your Cabinet Coach.

Some things to do/consider as you review your layout:

- Measure your space again to ensure proper room dimensions were shown on the drawing.
- Double-check your measurements for ALL window and door openings. Be sure to account for the width of trim in your window/door measurements.
- Which cabinet sides will be visible and therefore require a finished end?
- Do you have uneven floors or ceilings? If so, be sure to account for those differences as you determine your cabinet heights.
- Are there room obstructions? (i.e. soffits, plumbing, vents, duct work, etc.) Be sure to note them on your drawing.

Step 2: After your questions have been answered by your Cabinet Coach, please submit a numbered list of changes for updating your design/quote.

Example list of revisions:

1. Change Cabinet #4 from a B18 to a B3D18
2. Change the wall cabinet height to 36"
3. Make Cabinet #12 a Trash Pull-Out
4. Please add a 30" pantry to the right of Cabinet #2
5. Add lightrail B11

IMPORTANT: Your first set of revisions are complimentary. Additional revisions will result in an automatic upgrade from a Basic Design to a Premium Design for an additional fee (\$150 minimum). Subsequent revisions will be invoiced at \$80/hour.

For customers interested in speaking directly with a designer, we now offer a Design Consultation. Rates are \$150 for 30-minutes or \$300 for 60-minutes. Ask your Cabinet Coach how to get started.

Disclaimer: This design is the result of information that you, the customer, have provided to Cabinet Joint for the purpose of visualizing your cabinet layout before placing an order. It is the sole responsibility of the customer to verify all room dimensions, cabinet sizes, and appliance openings before placing that order. If you would prefer to consult with a designer for a more detailed and customized drawing, we suggest you speak with your cabinet coach about our Design Consultation or Pro Design services.