

Cabinet, Door & Drawer Front Specifications:

Flush Inset

CRP-10 (F1223 bead) Door

Slab Drawer-Front

Finish varies (see cabinet schedules)

Additional Items Needed:

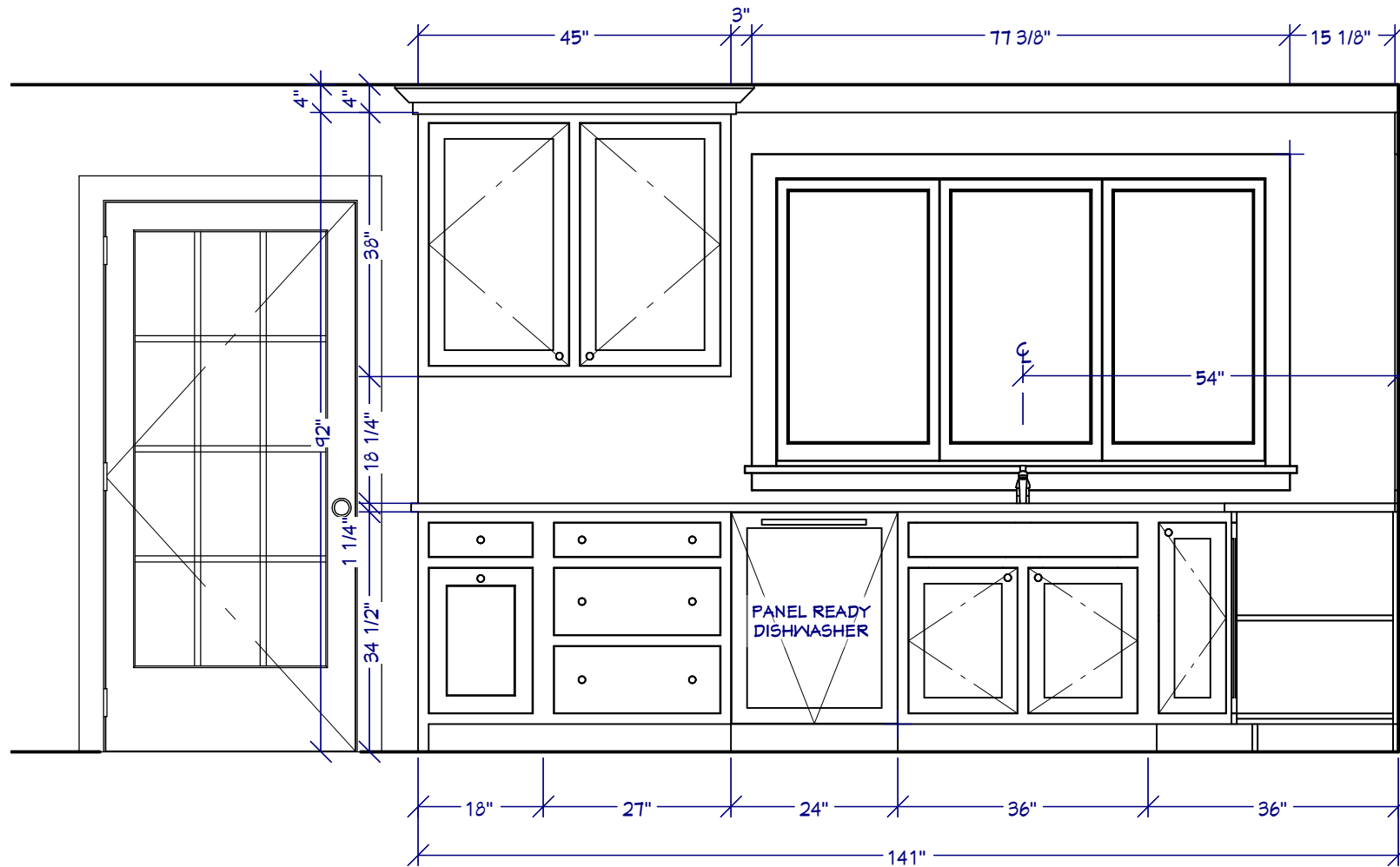
Crown 1529A w/ Slab Riser

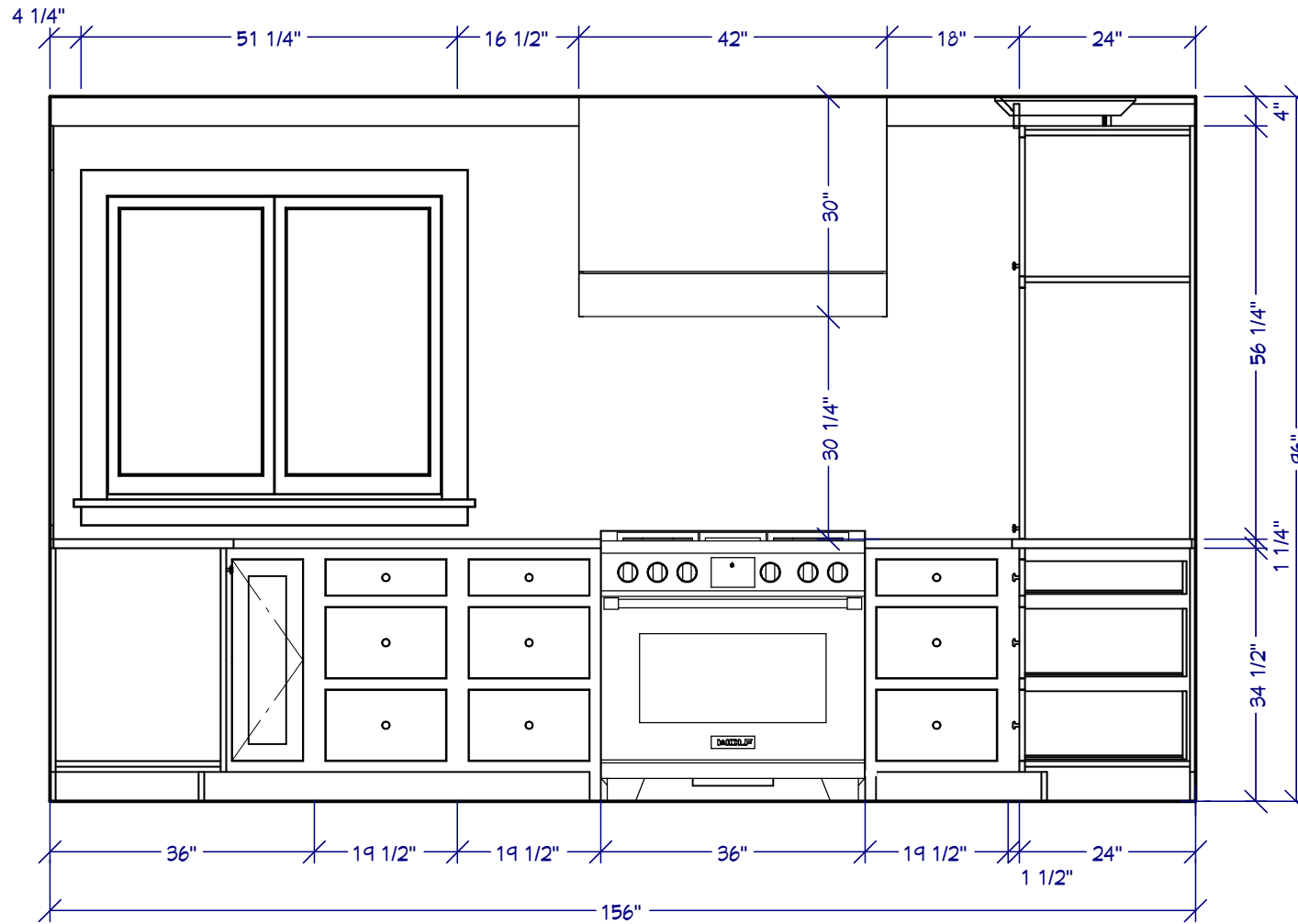
Toe Kick Material

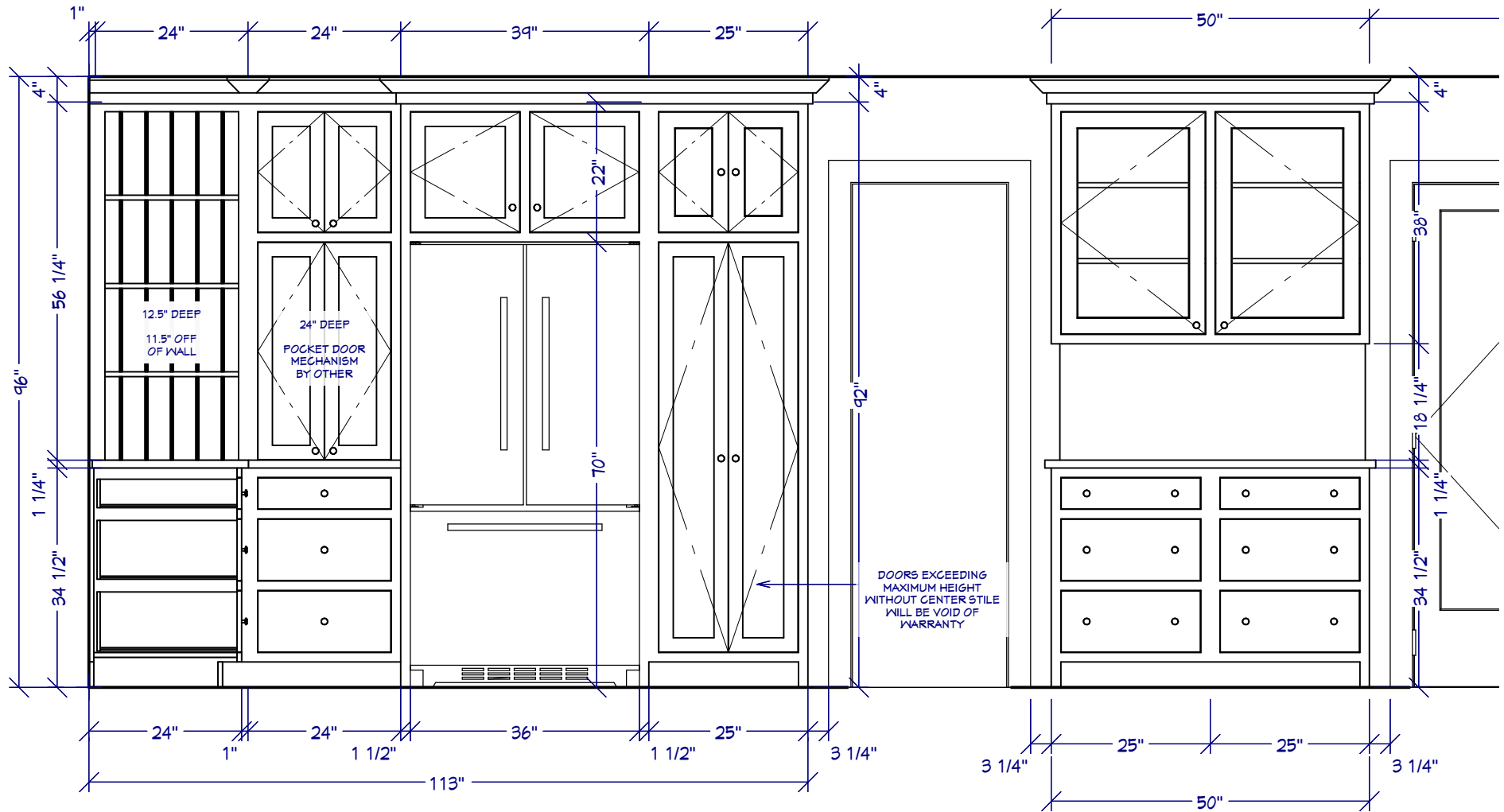
Schedule A - Perimeter & Coffee Cabinets: MDF Antique White						
	CABINET CODE	WIDTH	HEIGHT	DEPTH	DESCRIPTION	CABINET OPTIONS/ACCESSORIES
A1	CSW CS	45"	38"	12 1/2"	wall center stile	FLB
A2	CSWOBS	24"	56 1/4"	12 1/2"	wall open book shelf	EXTL, FLR
A3	CSWAC BD (carcass only)	24"	56 1/4"	24"	waal appliance garage butt doors	CF, FLL
A4	CSRTBCS top cabinet 20"h	39"	92"	25"	refrigerator tall both center stile	FLB
A5	CSCO	25"	92"	25"	utility cabinet reverse butt doors	CFFLR, FT
A6	CSW2CS (carcass only)	50"	38"	12 1/2"	wall center stile	CF, FLB, FO doors, MI
A7	CSB TPO	18"	34 1/2"	24"	trash cabinet	FLL, TPO, NSH, NS, LEL
A8	CSB3DEH	27"	34 1/2"	24"	base three drawer equal height	
A9	CSBS2D1D	36"	34 1/2"	24"	base sink two door one drawer	
A10	CSBCP	36"	34 1/2"	36"	base corner pie	
A11	CSB3DEH	19 1/2"	34 1/2"	24"	base three drawer equal height	utensil organizer top drawer
A12	CSB3DEH	19 1/2"	34 1/2"	24"	base three drawer equal height	cutlery organizer top drawer, LER
A13	CSB3DEH	19 1/2"	34 1/2"	24"	base three drawer equal height	EXTR, spice organizer top drawer, LEL
A14	CSB3DEH	24"	34 1/2"	24"	base three drawer equal height	EXTL
A15	CSB3DEH	25"	34 1/2"	24"	base three drawer equal height	LEL, FLL
A16	CSB3DEH	25"	34 1/2"	24"	base three drawer equal height	FLR, LER
A17	beadboard panel	24"	60 1/4"	1/4"	pantry beadboard	

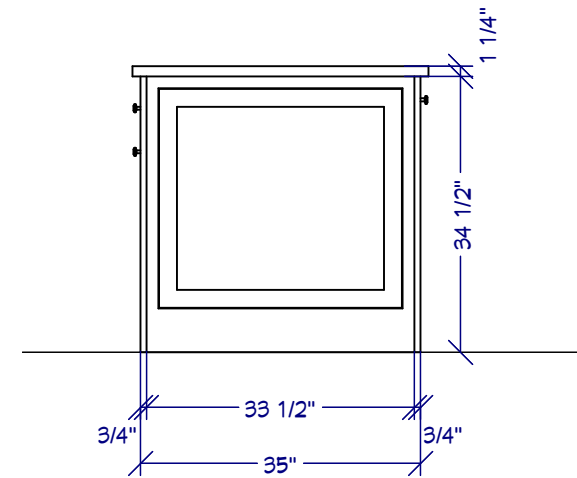
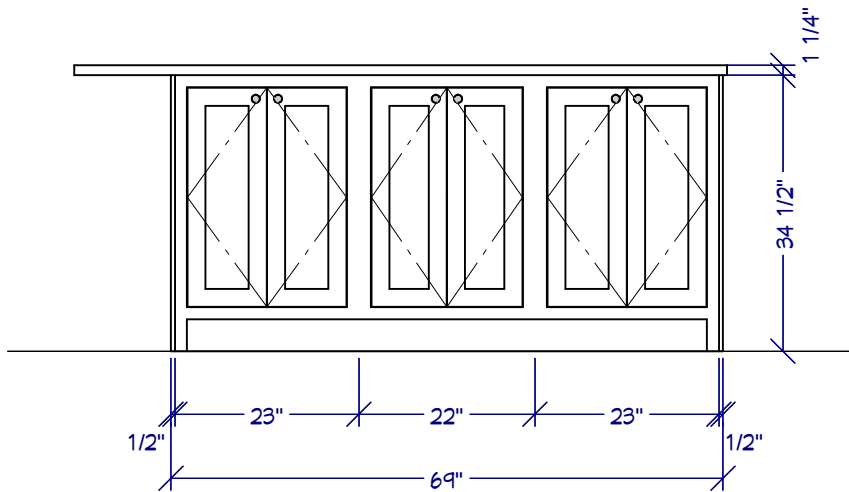
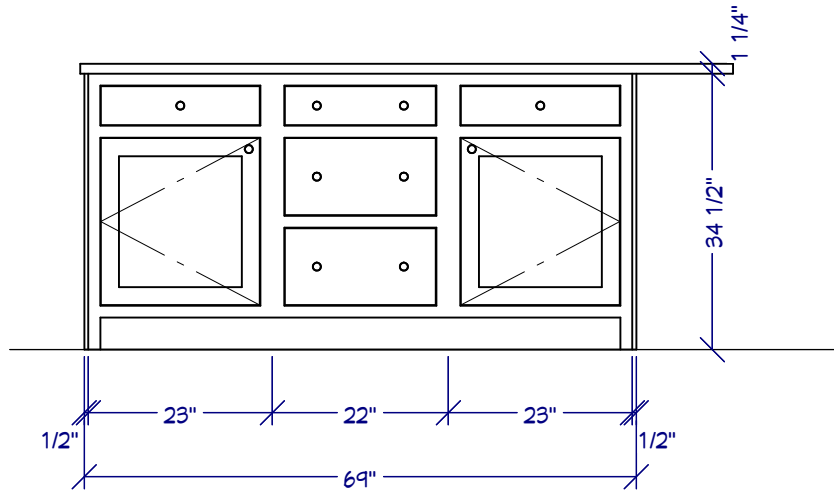
Schedule B - Island Cabinets: MDF Prism Anonymous						
	CABINET CODE	WIDTH	HEIGHT	DEPTH	DESCRIPTION	CABINET OPTIONS/ACCESSORIES
B1	CSB	23"	34 1/2"	18"	base with single door	EXTL 1/2", LEL, Tray organizer
B2	CSB3DEH	22"	34 1/2"	18"	base three drawer equal height	
B3	CSB	23"	34 1/2"	18"	base with single door	EXTR 1/2", LER, POT2
B4	CSBFD BD	23"	34 1/2"	17"	base full door butt doors	EXTL 1/2", FLL
B5	CSBFD BD	22"	34 1/2"	17"	base full door butt doors	
B6	CSBFD BD	23"	34 1/2"	17"	base full door butt doors	LER, EXTR 1/2"

Cabinet Options/Accessories Abbreviation Key: BPO(Base Pull Out) - CF(Custom Frame) - CTR(Custom Top Reveal) - CBR(Custom Bottom Reveal) - DT(Dust Top) - EXTL(Extended Stile Left) - EXTR(Extended Stile Right) - EXTB(Extended Stile Both) - FLL(Flush End Left) - FLR(Flush End Right) - FLB(Flush End Both) - F/O(Frame Only) - FT(Flush Toe) - LEL(Leg Extension Left) - LER(Leg Extension Right) - LEB(Leg Extension Both) - MI(Matching Interior) - ND(No Doors) - NS(No Shelves) - NSH(No Shelf Holes) - PFDL(Prep False Door Left) - PFDR(Prep False Door Right) - PFDB (Prep False Door Both) - TPO(Trash Pull-Out) - TSS(Recessed Toe Space Side) - SBR(Shaped Bottom Rail)









Thank you for your interest in our design services! We look forward to completing this project with you!

Step 1: Review your design and compile a list of questions to discuss with your Cabinet Coach.

Some things to do/consider as you review your layout:

- Measure your space again to ensure proper room dimensions were shown on the drawing.
- Double-check your measurements for ALL window and door openings. Be sure to account for the width of trim in your window/door measurements.
- Which cabinet sides will be visible and therefore require a finished end?
- Do you have uneven floors or ceilings? If so, be sure to account for those differences as you determine your cabinet heights.
- Are there room obstructions? (i.e. soffits, plumbing, vents, duct work, etc.) Be sure to note them on your drawing.

Step 2: After your questions have been answered by your Cabinet Coach, please submit a numbered list of changes for updating your design/quote.

Example list of revisions:

1. Change Cabinet #4 from a B18 to a B3D18
2. Change the wall cabinet height to 36"
3. Make Cabinet #12 a Trash Pull-Out
4. Please add a 30" pantry to the right of Cabinet #2
5. Add lightrail B11

IMPORTANT: Your first set of revisions are complimentary. Additional revisions will result in an automatic upgrade from a Basic Design to a Premium Design for an additional fee (\$150 minimum). Subsequent revisions will be invoiced at \$80/hour.

For customers interested in speaking directly with a designer, we now offer a Design Consultation. Rates are \$150 for 30-minutes or \$300 for 60-minutes. Ask your Cabinet Coach how to get started.

Disclaimer: This design is the result of information that you, the customer, have provided to Cabinet Joint for the purpose of visualizing your cabinet layout before placing an order. It is the sole responsibility of the customer to verify all room dimensions, cabinet sizes, and appliance openings before placing that order. If you would prefer to consult with a designer for a more detailed and customized drawing, we suggest you speak with your cabinet coach about our Design Consultation or Pro Design services.