

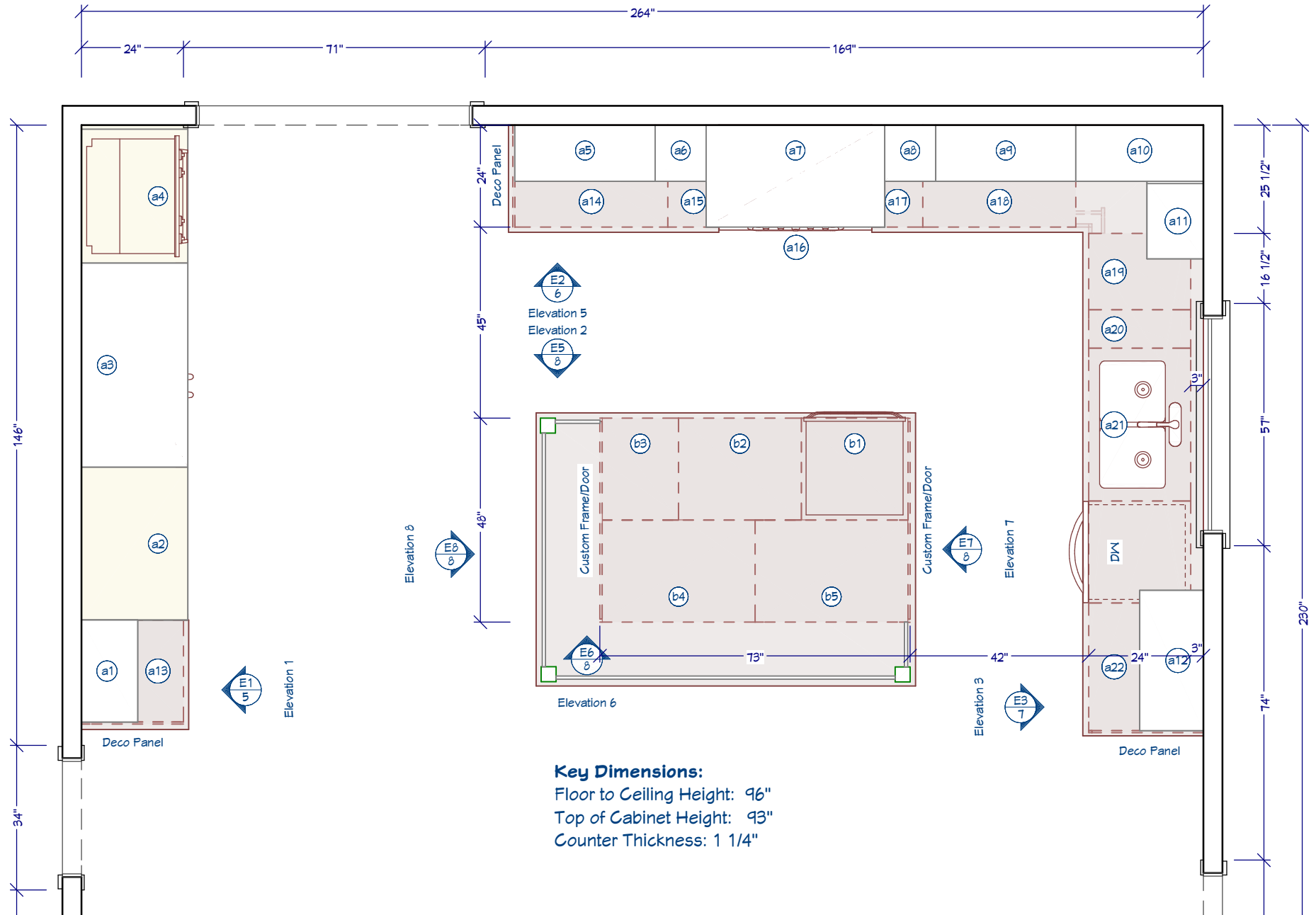
VALUE DESIGN PACKET



RENDERINGS



FLOOR PLAN



Key Dimensions:

Floor to Ceiling Height: 96"
 Top of Cabinet Height: 93"
 Counter Thickness: 1 1/4"

CABINET SCHEDULE

Cabinet/Door/Drawer Specifications:

Flush Inset

Door: Albany

Drawer: Albany; Slab top drawer

Finish Varies (see cabinet schedules)

Additional Items Needed

Crown 1524, Slab Crown Riser, Shaker Lightrail

Toe Kick Material, Hinges for custom cabinets

Deco End Panels (Qty ?)

3 1/2" Dunkirk Square Legs (Qty 3)

2 1/2" Slab - island skirt

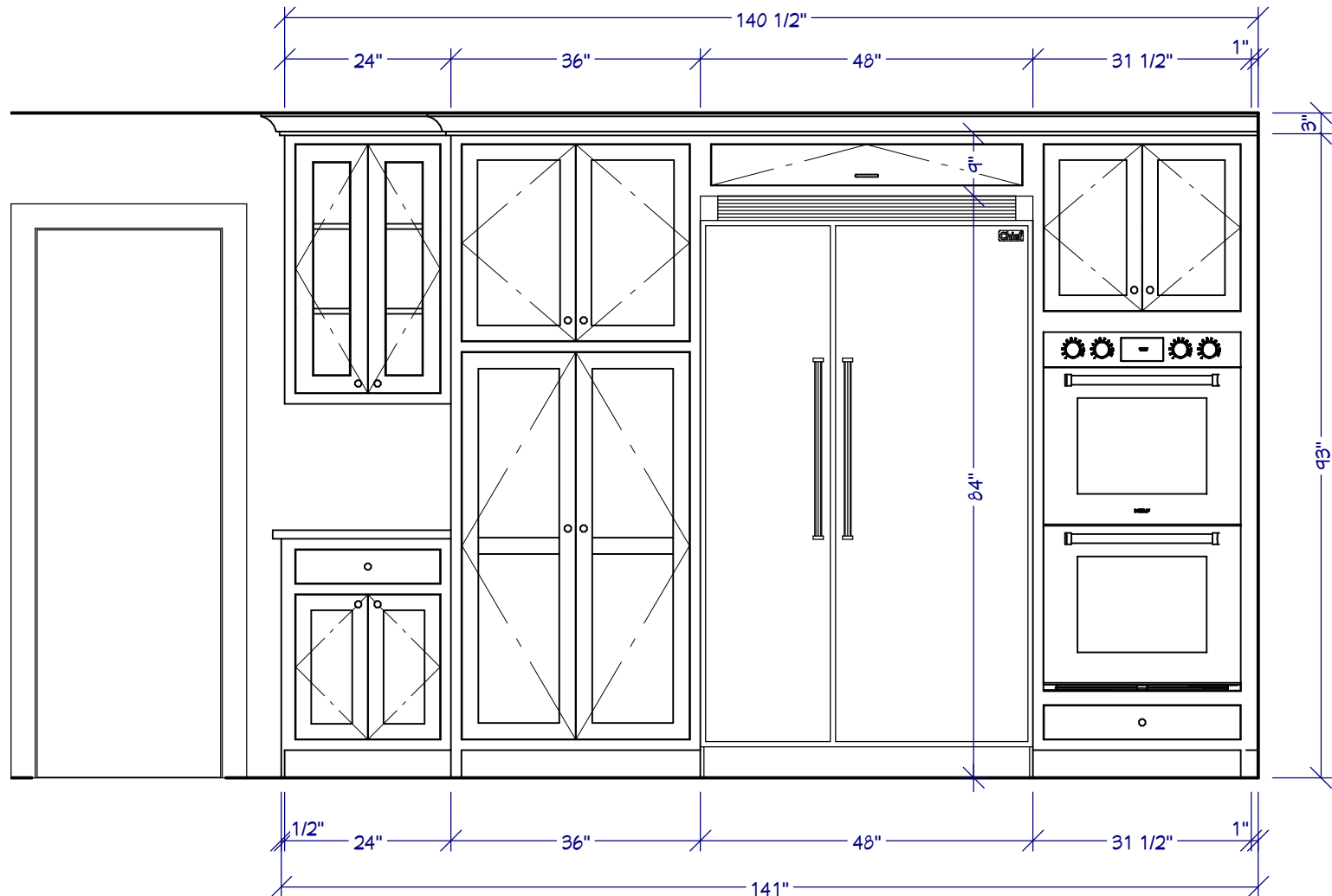
Schedule A - Perimeter Cabinet Schedule: MDF, Colourtone TBD

	CABINET CODE	WIDTH	HEIGHT	DEPTH	DESCRIPTION	CABINET OPTIONS/ACCESSORIES
a1	CSW_BD	24"	39"	13 1/4"	wall_butt doors	FLL, MI, F/O Doors
a2	CSUC_BD	36"	93"	25"	utility cabinet_butt doors	FLB, LEL
a3	CSW	48"	9"	25"	standard wall_single door	installed horizontally
a4	CSCO	31 1/2"	93"	25"	oven cabinet type B butt doors	CSFF, EXTR, LER, FLL
a5	CSW_BD	33"	39"	13 1/4"	wall_butt doors	FLL
a6	CSW	12"	39"	13 1/4"	standard wall_single door	FLR
a7	CSWCO	42"	24"	24"	wall case only	CSFF, FLB
a8	CSW	12"	39"	13 1/4"	standard wall_single door	FLL
a9	CSW_BD	33"	39"	13 1/4"	wall_butt doors	
a10	CSWCO	30"	39"	13 1/4"	custom wall blind corner	CSFF
a11	CSW	17 3/4"	39"	13 1/4"	standard wall_single door	FLR, 1/2" EXTL
a12	CSW1D_BD	33"	57 1/4"	15"	wall one drawer_butt doors	FLB
a13	CSB_BD	24"	34 1/2"	24"	standard base butt doors	1/2" EXTL, LEL
a14	CSB3DEH	36"	34 1/2"	24"	base three drawer equal height	1/2" EXTL, LEL
a15	CSBFD	12"	34 1/2"	24"	base full door_single door	
a16	CSCONH	36"	27 3/4"	24"	custom rangetop base cabinet	CSFF
a17	CSBFD	12"	34 1/2"	24"	base full door_single door	
a18	CSB3DEH	36"	34 1/2"	24"	base three drawer equal height	1 1/2" EXTR
a19	CSB	18"	34 1/2"	24"	standard base with trash pullout	NS, NSH, NH, TPO, 1 1/2" EXTL
a20	CSBFD	9"	34 1/2"	24"	base full door_single door	
a21	CSBS_BD	36"	34 1/2"	24"	base sink butt doors	
a22	CSB_BD	30"	34 1/2"	24"	standard base butt doors	1/2" EXTR, LER

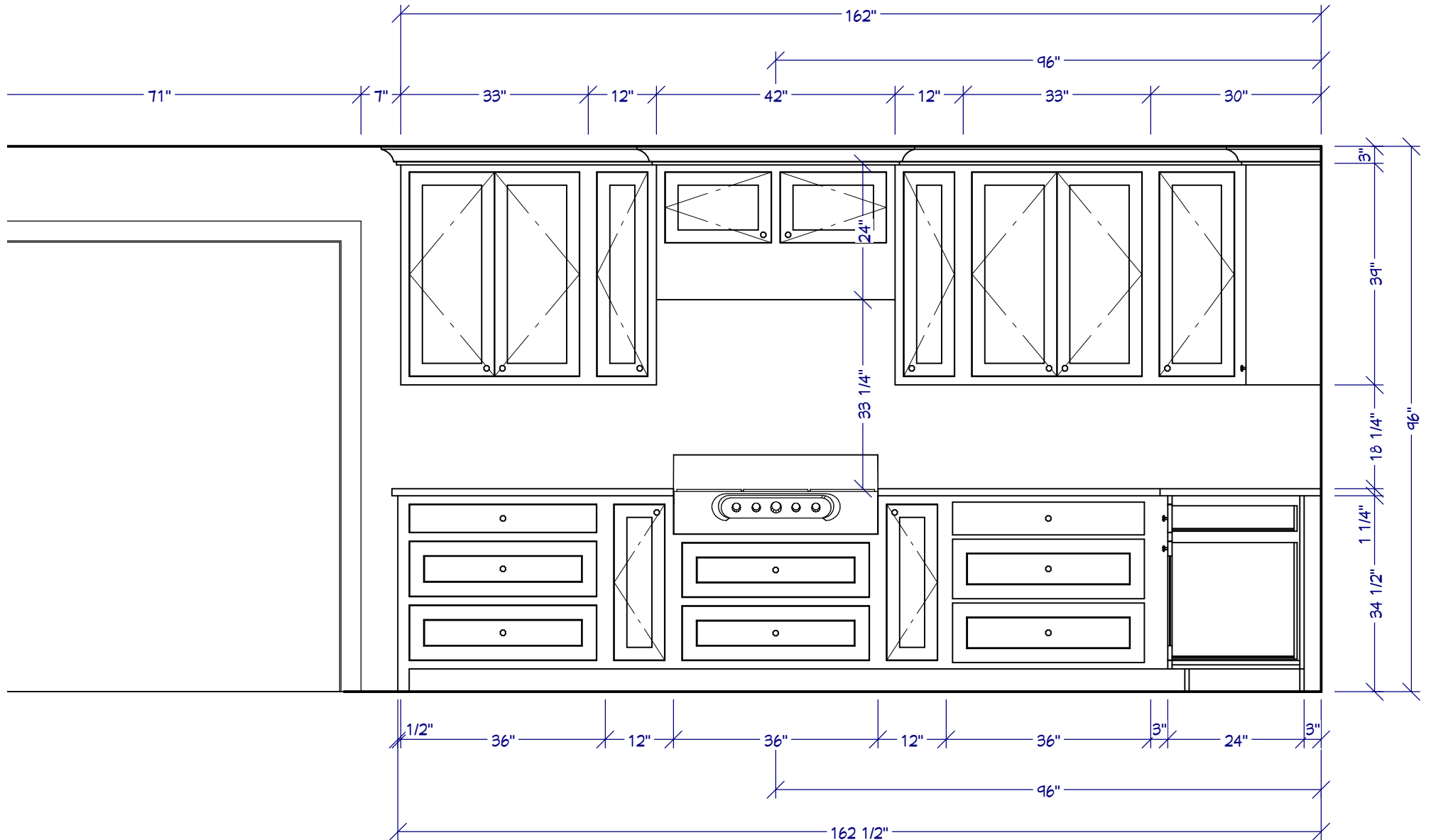
Schedule B - Island Cabinet Schedule: Wood Stain TBD

	CABINET CODE	WIDTH	HEIGHT	DEPTH	DESCRIPTION	CABINET OPTIONS/ACCESSORIES
b1	CSCONH	25 1/8"	34 1/2"	24"	custom built in microwave base	CSFF, 1/2" EXTL, LEL
b2	CSBFD_BD	28 7/8"	34 1/2"	24"	base full door_butt doors	
b3	CSBFD	18"	34 1/2"	24"	base full door_single door	1/2" EXTR, LER, mixer lift
b4	CSBFD_BD	36"	34 1/2"	24"	base full door_butt doors	1/2" EXTL, FT
b5	CSBFD_BD	36"	34 1/2"	24"	base full door_butt doors	1/2" EXTR, FT

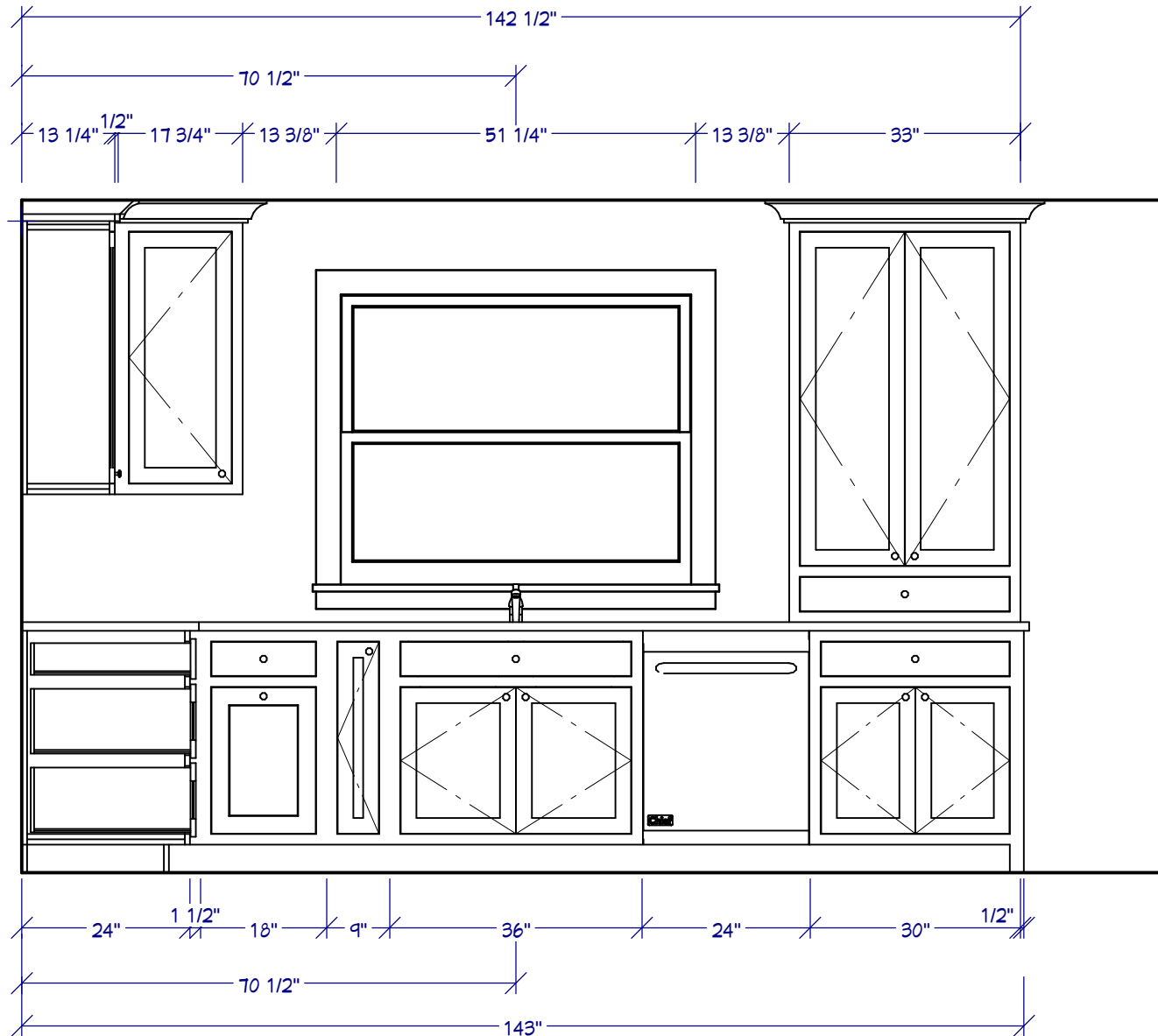
ELEVATION 1



ELEVATION 2

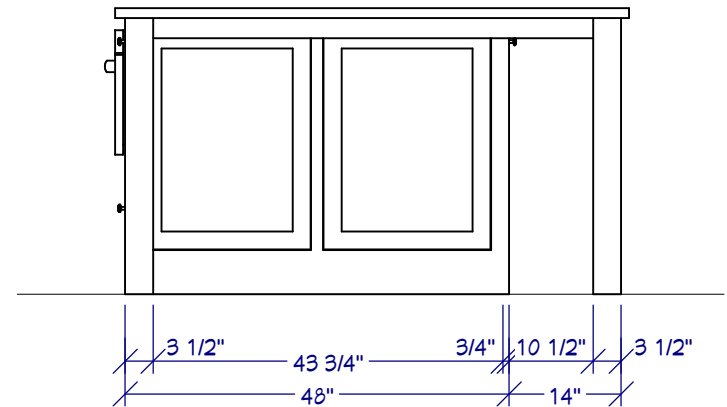
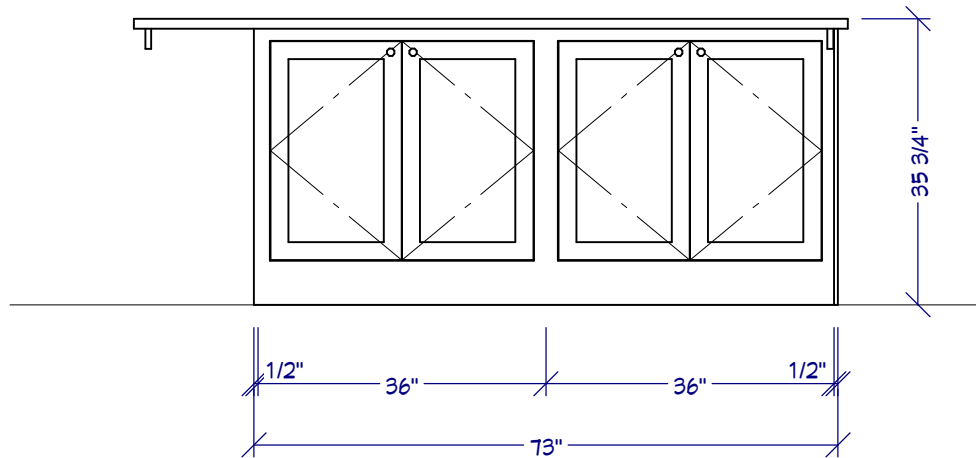
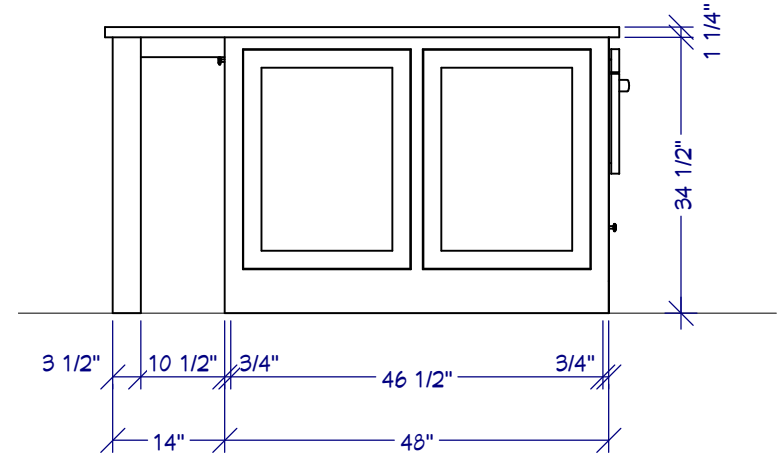
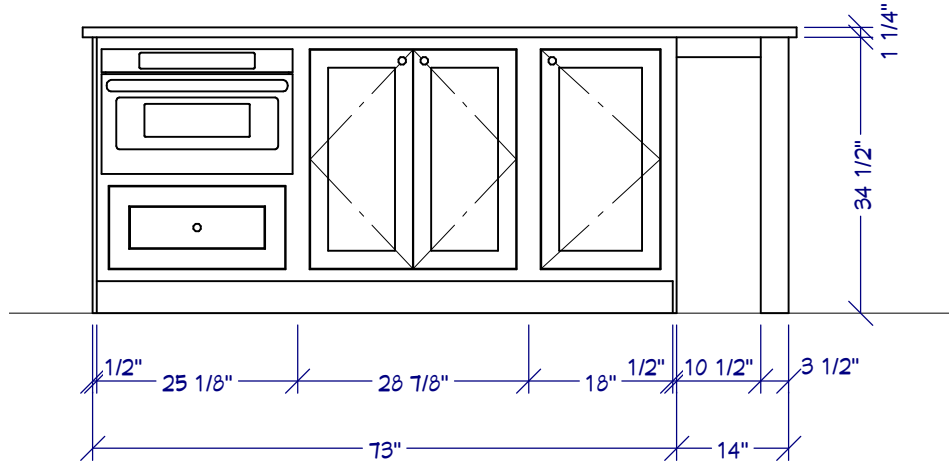


ELEVATION 3



BASE CABINETS ALONG THIS WALL INSTALLED 3" FROM WALL

ISLAND ELEVATIONS



DESIGN REVIEW PROCESS

Thank you for your interest in our design services! We look forward to completing this project with you!

Step 1: Review your design and compile a list of questions to discuss with your Cabinet Coach.

Some things to do/consider as you review your layout:

- Measure your space again to ensure proper room dimensions were shown on the drawing.
- Double-check your measurements for ALL window and door openings. Be sure to account for the width of trim in your window/door measurements.
- Which cabinet sides will be visible and therefore require a finished end?
- Do you have uneven floors or ceilings? If so, be sure to account for those differences as you determine your cabinet heights.
- Are there room obstructions? (i.e. soffits, plumbing, vents, duct work, etc.) Be sure to note them on your drawing.

Step 2: After your questions have been answered by your Cabinet Coach, please submit a numbered list of changes for updating your design/quote.

Example list of revisions:

1. Change Cabinet #4 from a B18 to a B3D18
2. Change the wall cabinet height to 36"
3. Make Cabinet #12 a Trash Pull-Out
4. Please add a 30" pantry to the right of Cabinet #2
5. Add lightrail B11

IMPORTANT: Your first set of revisions are complimentary. Additional revisions will result in an automatic upgrade from a Basic Design to a Value Design for \$150. Subsequent revisions will be invoiced at \$80/hour.

For customers interested in speaking directly with a designer, we now offer a Design Consultation. Rates are \$150 for 30-minutes or \$300 for 60-minutes. Ask your Cabinet Coach how to get started.

Disclaimer: This design is the result of information that you, the customer, have provided to Cabinet Joint for the purpose of visualizing your cabinet layout before placing an order. It is the sole responsibility of the customer to verify all room dimensions, cabinet sizes, and appliance openings before placing that order. If you would prefer to consult with a designer for a more detailed and customized drawing, we suggest you speak with your cabinet coach about our Design Consultation or Pro Design services.