

CABINET JOINT
Finely crafted, fully custom RTA cabinetry

www.cabinetjoint.com
 phone: 888-211-6482

5/18/2021

Design Disclaimer:

Your Basic Design Packet is for the purpose of spacial-planning and obtaining a bugetary quote. Some room dimensions, cabinets sizes, and appliance selections may be assumed and/or approximate. When using a "Concept-Only" drawing, it is the customer's responsibility to ensure that their cabinets and appliances fit properly within their space. It is of utmost importance that you verify the cabinet dimensions on your quote for accuracy before placing your order as changes from the prelim drawing and initial quote may have ocured. For a more detailed and customized drawing, please talk to your cabinet coach about collaborating with a designer from Cabinet Joint's Pro Design Service. Thank you for your interest in our products!

Customer Name
 Ceiling Ht: 96"
 Full-overlay; CRP-10751MT

Design Revisions:

This drawing package comes with one set of free revisions. Please take plenty of time to thoroughly review this drawing packet. Focus on your work-flows, traffic patterns, and seating clearances. Compile a list of the changes you'd like to make. Here are some things you'll want to consider as you make changes to your layout:

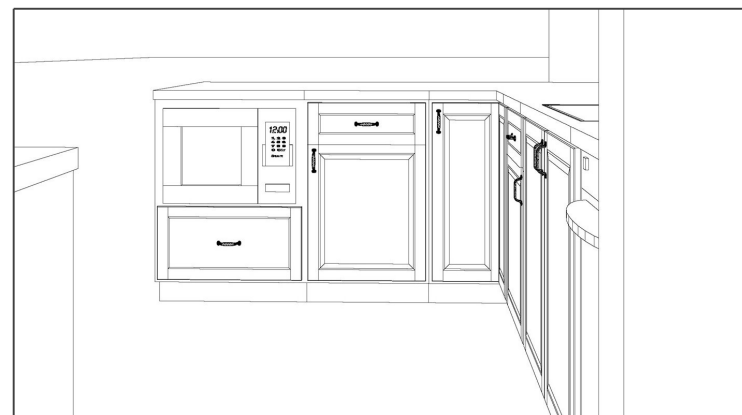
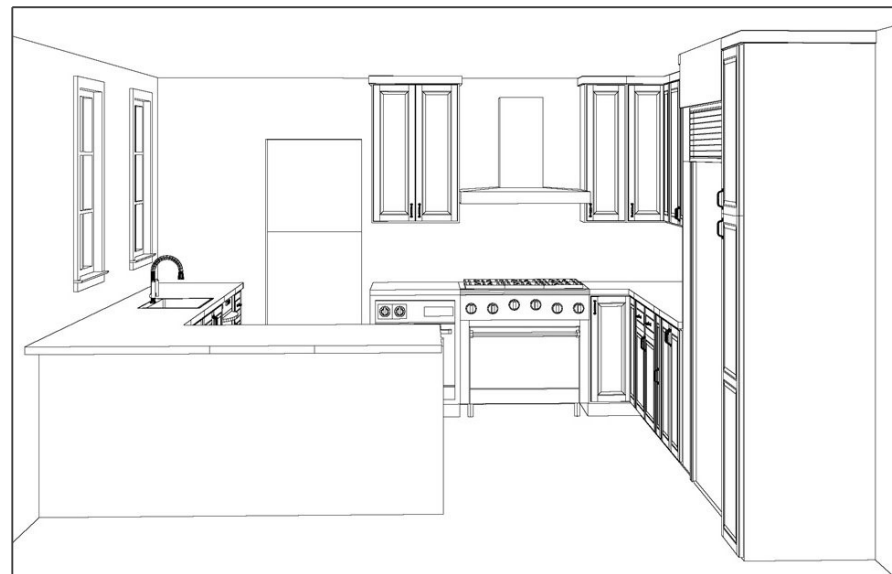
1. Measure your space again to ensure proper room dimensions were stated on the drawing.
2. Double-check your measurements for ALL window and door openings.
3. Make sure to measure from outside edge of trim to outside edge of trim on all room openings.
4. Do you have uneven floors or ceilings? If so, make sure to take into account those differences as you determine your cabinet heights.
5. Do you have any room obstructions (i.e. soffits, plumbing, vents, duct work, etc)? Make sure those areas are noted on your drawing.
6. Which cabinet sides will be visible and therefore require a finished end?

If you'd like to revise this drawing, please submit a numbered list of changes to your Cabinet Coach and discuss the changes with him. Once your Cabinet Coach has approved your list of revisions, he will forward the list on to our design services department and we will revise your drawing.

Again, the first set of revisions is complimentary. However, further revisions will be invoiced based on a rate of \$80/hr.

Example List of Revisions:

1. Change Cabinet #4 from a B18 to a B3D18.
2. Change the wall cabinet height to 36".
3. Make Cabinet #12 a Trash Pull-Out.
4. Please add a 30" pantry to the right of Cabinet #12.
5. Add lightrail B11.



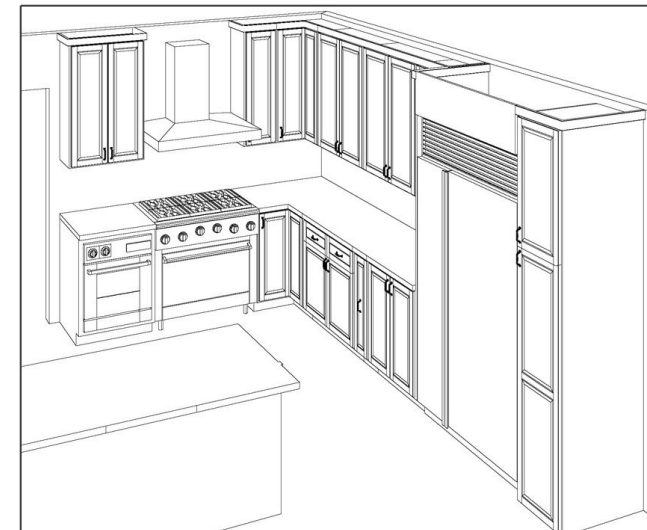
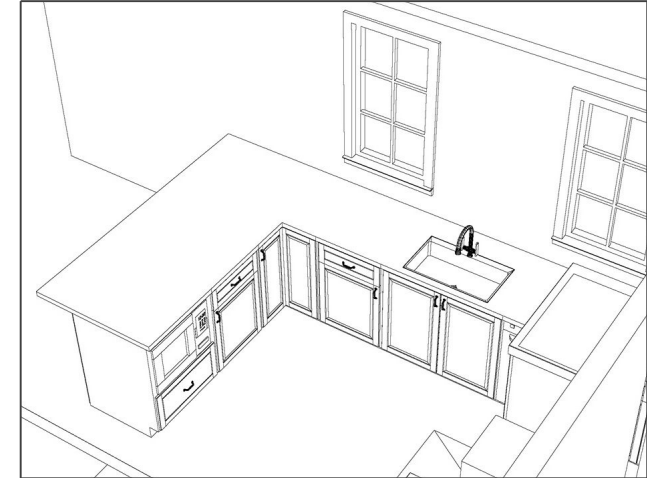
CABINET JOINT
Finely crafted, fully custom RTA cabinetry

www.cabinetjoint.com
phone: 888-211-6482

5/18/2021

Design Disclaimer:

Your Basic Design Packet is for the purpose of spacial-planning and obtaining a bugetary quote. Some room dimensions, cabinets sizes, and appliance selections may be assumed and/or approximate. When using a "Concept-Only" drawing, it is the customer's responsibility to ensure that their cabinets and appliances fit properly within their space. It is of utmost importance that you verify the cabinet dimensions on your quote for accuracy before placing your order as changes from the prelim drawing and initial quote may have ocured. For a more detailed and customized drawing, please talk to your cabinet coach about collaborating with a designer from Cabinet Joint's Pro Design Service. Thank you for your interest in our products!



CABINET JOINT
Finely crafted, fully custom RTA cabinetry

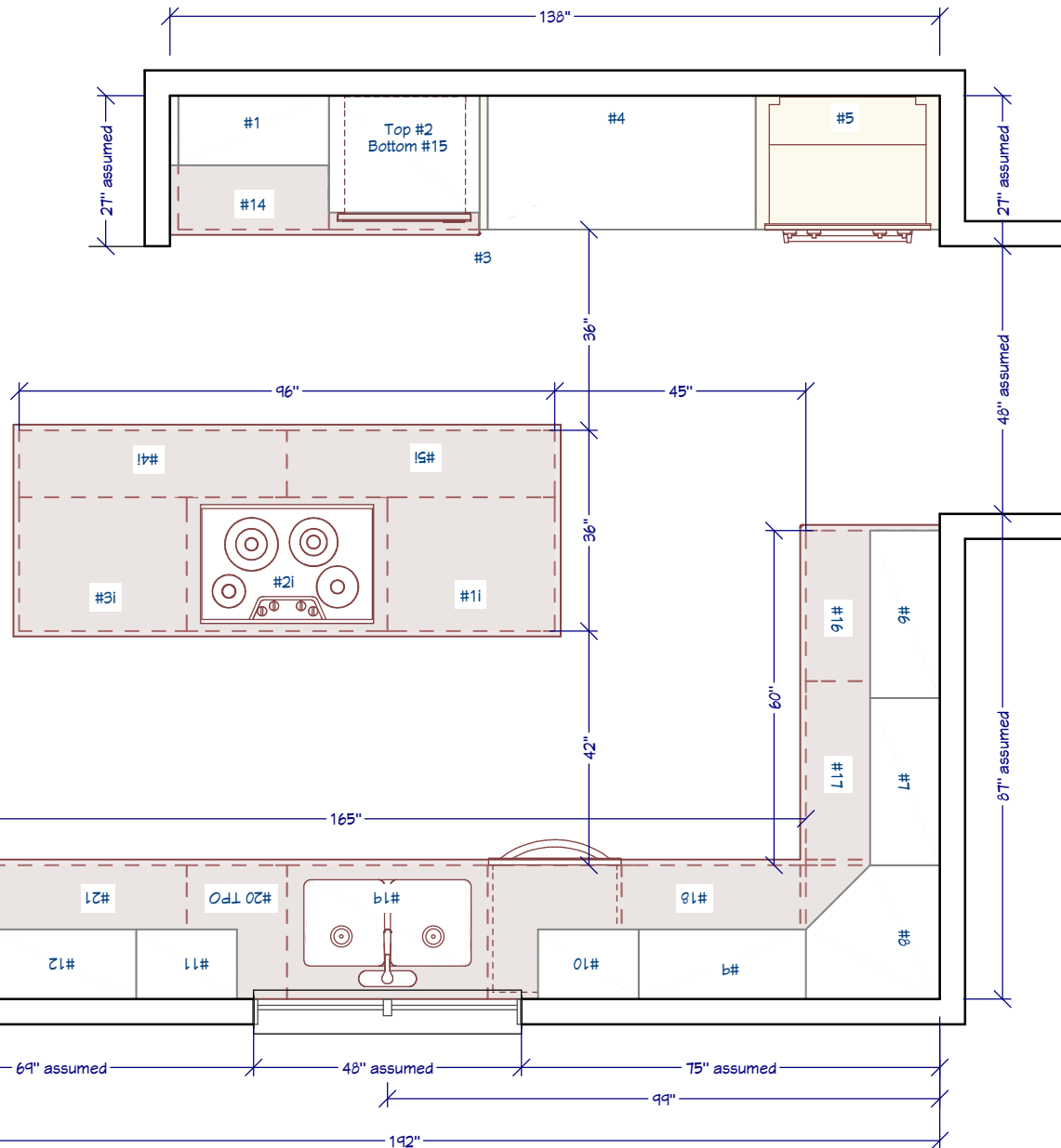
www.cabinetjoint.com
 phone: 888-211-6482

5/18/2021

Design Disclaimer:

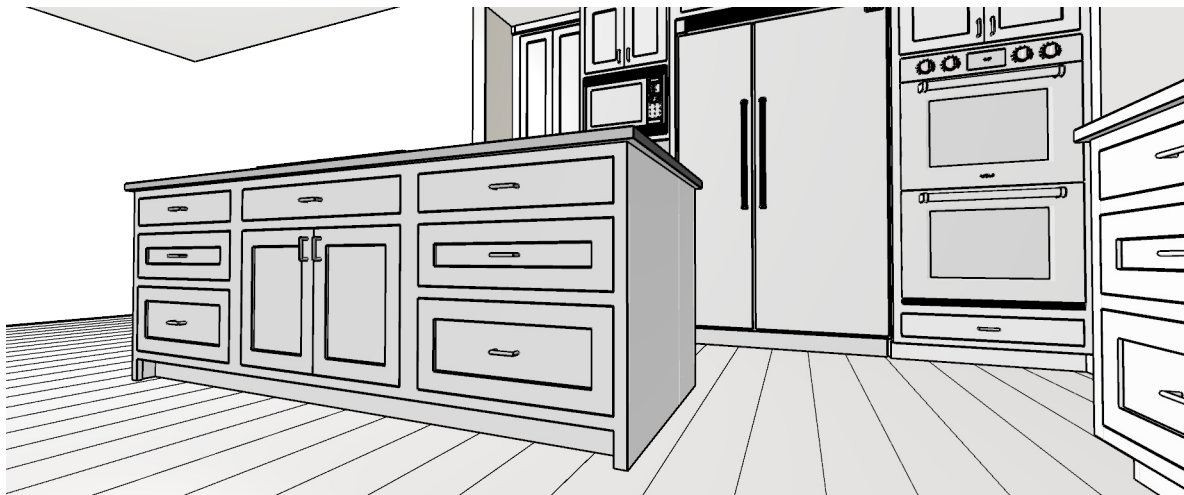
Your Basic Design Packet is for the purpose of spacial-planning and obtaining a bugetary quote. Some room dimensions, cabinets sizes, and appliance selections may be assumed and/or approximate. When using a "Concept-Only" drawing, it is the customer's responsibility to ensure that their cabinets and appliances fit properly within their space. It is of utmost importance that you verify the cabinet dimensions on your quote for accuracy before placing your order as changes from the prelim drawing and initial quote may have ocured. For a more detailed and customized drawing, please talk to your cabinet coach about collaborating with a designer from Cabinet Joint's Pro Design Service. Thank you for your interest in our products!

Ceiling Height: 108"
 Perimeter: # 1 - #22
 Island: #1i - #5i



DATE:	5/19/2021	Customer:	Customer Name
SCALE:		Designer:	Cabinet Coach:
SHEET:	1	Project/Revision:	Basic Design Packet

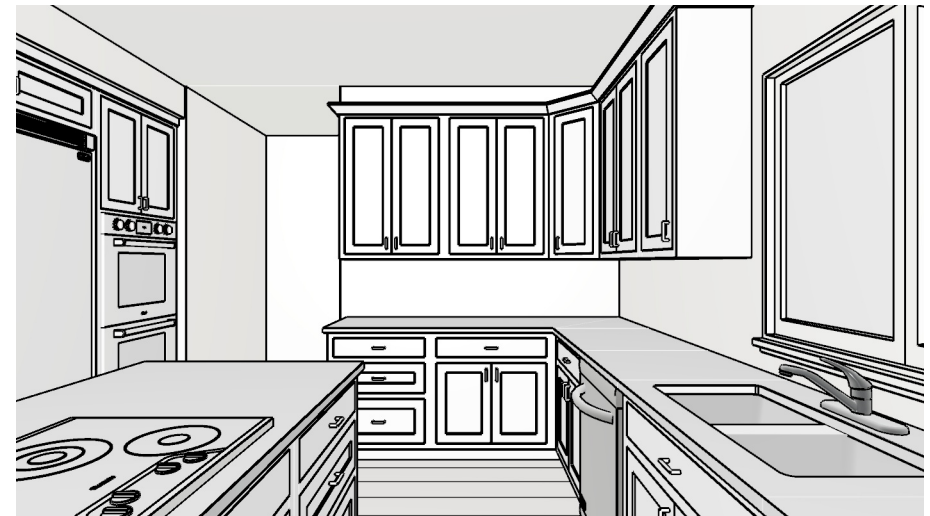
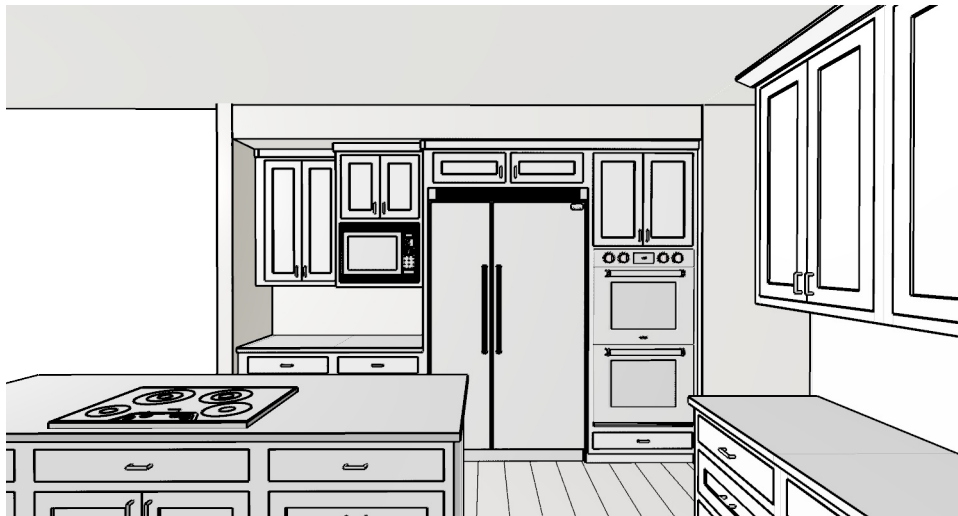
Your Basic Design is a conceptual drawing for the purpose of spacial-planning and obtaining a budgetary quote. Some room dimensions, cabinet sizes, and appliance selections may be assumed and/or approximate. It is the customer's responsibility to ensure that their cabinets and appliances fit properly within their space. It is of utmost importance that you verify the cabinet dimensions on your quote for accuracy before placing your order as changes from the initial drawing and quote may have occurred. For a more detailed and customized drawing, please talk to your cabinet coach about collaborating with a designer from Cabinet Joint's Pro Design services. Thank you for your interest in our products!



DATE:	5/19/2021	Customer:	Customer Name	
SCALE:		Designer:		Cabinet Coach:
SHEET:	2	Project/Revision:	Basic Design Packet	

Your Basic Design is a conceptual drawing for the purpose of spacial-planning and obtaining a budgetary quote. Some room dimensions, cabinet sizes, and appliance selections may be assumed and/or approximate. It is the customer's responsibility to ensure that their cabinets and appliances fit properly within their space. It is of utmost importance that you verify the cabinet dimensions on your quote for accuracy before placing your order as changes from the initial drawing and quote may have occurred. For a more detailed and customized drawing, please talk to your cabinet coach about collaborating with a designer from Cabinet Joint's Pro Design services. Thank you for your interest in our products!


CABINET JOINT
Finely crafted, fully custom RTA cabinetry
 Ph. 888.211.6482



DATE:	5/19/2021	Customer:	Customer Name	
SCALE:		Designer:		Cabinet Coach:
SHEET:	3	Project/Revision:	Basic Design Packet	

Your Basic Design is a conceptual drawing for the purpose of spacial-planning and obtaining a budgetary quote. Some room dimensions, cabinet sizes, and appliance selections may be assumed and/or approximate. It is the customer's responsibility to ensure that their cabinets and appliances fit properly within their space. It is of utmost importance that you verify the cabinet dimensions on your quote for accuracy before placing your order as changes from the initial drawing and quote may have occurred. For a more detailed and customized drawing, please talk to your cabinet coach about collaborating with a designer from Cabinet Joint's Pro Design services. Thank you for your interest in our products!

 **CABINET JOINT**
Finely crafted, fully custom RTA cabinetry
 Ph. 888.211.6482

This drawing package comes with one set of free revisions.

Please take plenty of time to thoroughly review this drawing packet. Focus on your work-flows, traffic patterns, and seating clearances. Compile a list of the changes you'd like to make. Here are some things you'll want to consider as you make changes to your layout:

1. Measure your space again to ensure proper room dimensions were stated on the drawing.
2. Double-check your measurements for ALL window and door openings .
3. Make sure to measure from outside edge of trim to outside edge of trim on all room openings.
4. Do you have uneven floors or ceilings? If so, make sure to take into account those differences as you determine your cabinet heights.
5. Do you have any room obstructions (i.e. soffits, plumbing, vents, duct work, etc)? Make sure those areas are noted on your drawing.
6. Which cabinet sides will be visible and therefore require a finished end?

If you'd like to revise this drawing, please submit a numbered list of changes to your Cabinet Coach and discuss the changes with him. Once your Cabinet Coach has approved your list of revisions, he will forward the list on to our design services department and we will revise your drawing.

Again, the first set of revisions is complimentary. However, further revisions will be invoiced based on a rate of \$80/hr.

Example List of Revisions:

1. Change Cabinet #4 from a B18 to a B3D18.
2. Change the wall cabinet height to 36".
3. Make Cabinet #12 a Trash Pull-Out.
4. Please add a 30" pantry to the right of Cabinet #12.
5. Add lightrail B11.

DATE:	5/19/2021	Customer:	Customer Name	
SCALE:		Designer:		Cabinet Coach:
SHEET:	4	Project/Revision:	Basic Design Packet	

Your Basic Design is a conceptual drawing for the purpose of spacial-planning and obtaining a budgetary quote. Some room dimensions, cabinet sizes, and appliance selections may be assumed and/or approximate. It is the customer's responsibility to ensure that their cabinets and appliances fit properly within their space. It is of utmost importance that you verify the cabinet dimensions on your quote for accuracy before placing your order as changes from the initial drawing and quote may have occurred. For a more detailed and customized drawing, please talk to your cabinet coach about collaborating with a designer from Cabinet Joint's Pro Design services. Thank you for your interest in our products!



CABINET JOINT
Finely crafted, fully custom RTA cabinetry
Ph. 888.211.6482