







































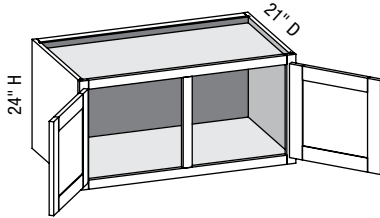








### WHV/CSWHVCS - Wall Hung Vanity w/Center Stile



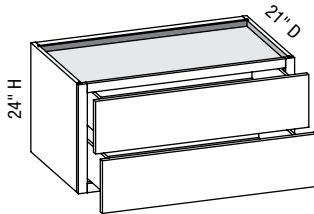
Custom Size Ranges  
 Width: 27"– 48"  
 Height: 18"– 24"  
 Depth: 18"– 21"

D	DF	DB	EXT	EXP	FL	WS	MI	FT
2			✓	✓	✓		✓	

- Advantage line only.
- Constructed with a full top.
- Includes two precut 2" x 4" installation cleats.
- The load capacity of these cabinets is greatly dependent on the quality of the installation screws and whether the cabinets are secured into the wall studs. If not secured into two or more studs, using high quality installation screws the cabinet may not support the desired weight.
- Conestoga will not be responsible for cabinet failure due to inadequate installation techniques or materials.

Cabinet Code	Advantage				Essence	Doors			Drawer Fronts		
	Price	Exposed End (ea.)	Flush End (ea.)	Shelf	Price	Inset	1/2"	1-1/4"	Inset	1/2"	1-1/4"
WHV2724				—	—	3.3	3.7	4.2	—	—	—
WHV3024				—	—	3.7	4.2	4.7	—	—	—
WHV3324				—	—	4.2	4.7	5.2	—	—	—
WHV3624				—	—	4.6	5.1	5.7	—	—	—
WHV3924				—	—	5.0	5.6	6.2	—	—	—
WHV4224				—	—	5.4	6.0	6.7	—	—	—
WHV4524				—	—	5.9	6.5	7.2	—	—	—
WHV4824				—	—	6.3	7.0	7.8	—	—	—

### WHV2D/CSWHV2D - Wall Hung Vanity Two Drawers



Custom Size Ranges  
 Width: 21"– 36"  
 Height: 18"– 24"  
 Depth: 18", 21"

D	DF	DB	EXT	EXP	FL	WS	MI	FT
	2	2	✓	✓	✓		✓	

- Advantage line only.
- Tandem slides only.
- Constructed with a full top.
- Includes two precut 2" x 4" installation cleats.
- The load capacity of these cabinets is greatly dependent on the quality of the installation screws and whether the cabinets are secured into the wall studs. If not secured into two or more studs, using high quality installation screws the cabinet may not support the desired weight.
- Conestoga will not be responsible for cabinet failure due to inadequate installation techniques or materials.

Cabinet Code	Advantage				Essence	Doors			Drawer Fronts		
	Price	Exposed End (ea.)	Flush End (ea.)	Shelf	Price	Inset	1/2"	1-1/4"	Inset	1/2"	1-1/4"
WHV2D2124				—	—	—	—	—	1.9	2.1	2.5
WHV2D2424				—	—	—	—	—	2.2	2.4	2.8
WHV2D2724				—	—	—	—	—	3.5	3.8	4.3
WHV2D3024				—	—	—	—	—	3.9	4.3	4.8
WHV2D3324				—	—	—	—	—	4.4	4.7	5.3
WHV2D3624				—	—	—	—	—	4.8	5.2	5.8

**Options Key:** D=Number of Doors DF=Number of Drawer Fronts DB=Drawer Boxes EXT=Extended Stiles EXP=Exposed End(s)  
 FL=Flush End(s) WS=Solid Wood Shelves MI=Matching Interior FT=Flush Toe