



CABINET JOINT
Finely crafted, fully custom RTA cabinetry

Tall Cabinet Discontinuation

Effective November 4, 2016

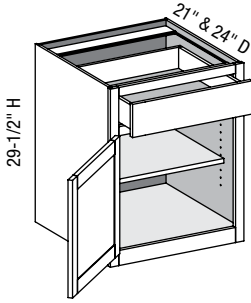
Tall Utility, Vanity Linen and Home Office/Other Room Cabinetry will no longer be available in the Essence Line.

This change is being made due to excessive breakage of large particle board sides internally, during shipment and within our customer's facilities.

If Essence tall cabinets are ordered, they will be converted to Advantage plywood construction and priced accordingly.



DB/CSDB - Desk Base



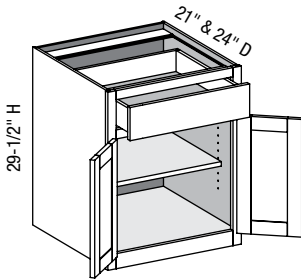
Custom Size Ranges
Width: 12"– 24"
Height: 29-1/2"
Depth: 18", 21", 24"

D	DF	DB	EXT	EXP	FL	WS	MI	FT
1	1	1	✓	✓	✓	✓	✓	STD

- 2-1/2" high flush toe.
- Specify single or butt doors on cabinets 24" wide.

Cabinet Code	Advantage				Essence	Doors			Drawer Fronts		
	Price	Exposed End (ea.)	Flush End (ea.)	Shelf	Price	Inset	1/2"	1-1/4"	Inset	1/2"	1-1/4"
DB1229.5						1.2	1.4	1.7	0.3	0.4	0.5
DB1529.5						1.5	1.8	2.1	0.4	0.5	0.6
DB1829.5						1.9	2.2	2.6	0.5	0.7	0.8
DB2129.5						2.3	2.6	3.0	0.6	0.8	0.9
DB2429.5						2.7	3.1	3.4	0.7	0.9	1.0

DB/CSDB - Desk Base w/Butt Doors



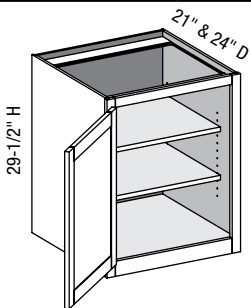
Custom Size Ranges
Width: 24"– 36"
Height: 29-1/2"
Depth: 18"– 24"

D	DF	DB	EXT	EXP	FL	WS	MI	FT
2	1	1	✓	✓	✓	✓	✓	STD

- 2-1/2" high flush toe.
- Specify single or butt doors on cabinets 24" wide.

Cabinet Code	Advantage				Essence	Doors			Drawer Fronts		
	Price	Exposed End (ea.)	Flush End (ea.)	Shelf	Price	Inset	1/2"	1-1/4"	Inset	1/2"	1-1/4"
DB2429.5BD						2.7	3.0	3.4	0.7	0.9	1.0

DBFD/CSDBFD - Desk Base Full Door



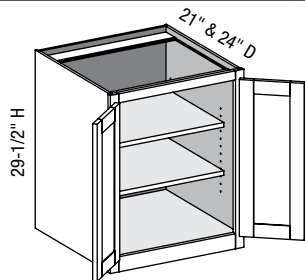
Custom Size Ranges
Width: 12"– 24"
Height: 29-1/2"
Depth: 18"– 24"

D	DF	DB	EXT	EXP	FL	WS	MI	FT
1			✓	✓	✓	✓	✓	STD

- 2-1/2" high flush toe.
- Specify single or butt doors on cabinets 24" wide.

Cabinet Code	Advantage				Essence	Doors			Drawer Fronts		
	Price	Exposed End (ea.)	Flush End (ea.)	Shelf	Price	Inset	1/2"	1-1/4"	Inset	1/2"	1-1/4"
DBFD1229.5						1.5	1.8	2.2	—	—	—
DBFD1529.5						2.1	2.4	2.8	—	—	—
DBFD1829.5						2.6	2.9	3.4	—	—	—
DBFD2129.5						3.1	3.5	4.0	—	—	—
DBFD2429.5						3.7	4.0	4.5	—	—	—

Options Key: D=Number of Doors DF=Number of Drawer Fronts DB=Drawer Boxes EXT=Extended Stiles EXP=Exposed End(s)
FL=Flush End(s) WS=Solid Wood Shelves MI=Matching Interior FT=Flush Toe

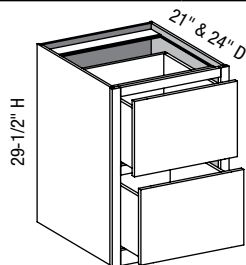
DBFD/CSDBFD - Desk Base Full Door w/Butt Doors


Custom Size Ranges
 Width: 24"– 36"
 Height: 29-1/2"
 Depth: 18"– 24"

D	DF	DB	EXT	EXP	FL	WS	MI	FT
2			✓	✓	✓	✓	✓	STD

- 2-1/2" high flush toe.
- When ordering custom size cabinets 24" wide, specify single or butt doors.

Cabinet Code	Advantage				Essence	Doors			Drawer Fronts		
	Price	Exposed End (ea.)	Flush End (ea.)	Shelf	Price	Inset	1/2"	1-1/4"	Inset	1/2"	1-1/4"
DBFD2429.5BD						3.6	4.0	4.5	—	—	—

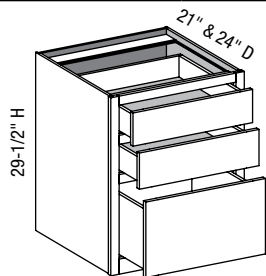
DB2D/CSDB2D - Desk Base Two Drawers


Custom Size Ranges
 Width: 12"– 36"
 Height: 29-1/2"
 Depth: 18", 21", 24"

D	DF	DB	EXT	EXP	FL	WS	MI	FT
	2	2	✓	✓	✓	✓		STD

- 2-1/2" high flush toe.
- Both drawers designed to accommodate Pendaflex files.
- 15" width Pendaflex files must be installed front to back.

Cabinet Code	Advantage				Essence	Doors			Drawer Fronts		
	Price	Exposed End (ea.)	Flush End (ea.)	Shelf	Price	Inset	1/2"	1-1/4"	Inset	1/2"	1-1/4"
DB2D1529.5				—		—	—	—	1.9	2.3	2.8
DB2D1829.5				—		—	—	—	2.4	2.9	3.4
DB2D2129.5				—		—	—	—	2.9	3.4	4.0

DB3D/CSDB3D - Desk Base Three Drawers


Custom Size Ranges
 Width: 12"– 36"
 Height: 29-1/2"
 Depth: 18", 21", 24"

D	DF	DB	EXT	EXP	FL	WS	MI	FT
	3	3	✓	✓	✓	✓		STD

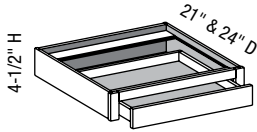
- 2-1/2" high flush toe.
- Bottom drawer designed to accommodate Pendaflex files.
- 15" width Pendaflex files must be installed front to back.

Cabinet Code	Advantage				Essence	Doors			Drawer Fronts		
	Price	Exposed End (ea.)	Flush End (ea.)	Shelf	Price	Inset	1/2"	1-1/4"	Inset	1/2"	1-1/4"
DB3D1529.5				—		—	—	—	1.8	2.3	2.7
DB3D1829.5				—		—	—	—	2.3	2.8	3.3
DB3D2129.5				—		—	—	—	2.7	3.4	3.8
DB3D2429.5				—		—	—	—	3.2	3.9	4.4

Options Key: D=Number of Doors DF=Number of Drawer Fronts DB=Drawer Boxes EXT=Extended Stiles EXP=Exposed End(s)
 FL=Flush End(s) WS=Solid Wood Shelves MI=Matching Interior FT=Flush Toe



DD/CSDD - Desk Drawer



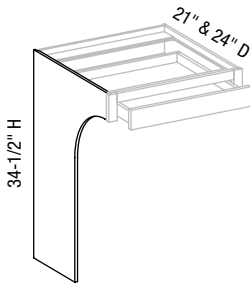
Custom Size Ranges
Width: 12"– 36"
Height: 4-1/2"
Depth: 18", 21", 24"

D	DF	DB	EXT	EXP	FL	WS	MI	FT
	1	1	✓	✓	✓			

- No bottom or bottom rail.

Cabinet Code	Advantage				Essence	Doors			Drawer Fronts		
	Price	Exposed End (ea.)	Flush End (ea.)	Shelf	Price	Inset	1/2"	1-1/4"	Inset	1/2"	1-1/4"
DD184.5				—		—	—	—	0.3	0.4	0.5
DD214.5				—		—	—	—	0.3	0.5	0.6
DD244.5				—		—	—	—	0.4	0.6	0.7
DD274.5				—		—	—	—	0.4	0.7	0.7
DD304.5				—		—	—	—	0.5	0.7	0.8
DD334.5				—		—	—	—	0.5	0.8	0.9
DD364.5				—		—	—	—	0.6	0.9	1.0

DDSL (R)/CSDDSL (R) - Desk Drawer Support Left (or Right)



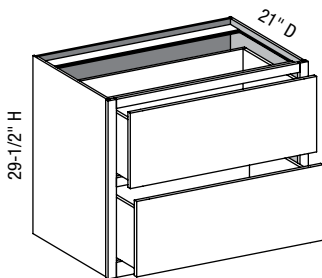
Custom Size Ranges
Height: 29-1/2"– 42"
Depth: 18", 21", 24"

D	DF	DB	EXT	EXP	FL	WS	MI	FT
			✓	✓	✓		STD	

- Advantage line only.
- Left shown.
- Bottom can be trimmed to custom height.
- Support leg only.
- Exposed edge is banded with matching specie veneer.

Cabinet Code	Advantage				Essence	Doors			Drawer Fronts		
	Price	Exposed End (ea.)	Flush End (ea.)	Shelf	Price	Inset	1/2"	1-1/4"	Inset	1/2"	1-1/4"
DDSL2134.5				—		—	—	—	—	—	—
DDSL2434.5				—		—	—	—	—	—	—
DDSR2134.5				—		—	—	—	—	—	—
DDSR2434.5				—		—	—	—	—	—	—

LF2D/CSLF2D - Lateral File Two Drawer



Custom Size Ranges
Width: 30"– 36"
Height: 29-1/2"
Depth: 21"

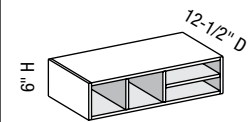
D	DF	DB	EXT	EXP	FL	WS	MI	FT
	2	2	✓	✓	✓			STD

- 2-1/2" high flush toe.
- Full extension interlocking drawer slides only.

Cabinet Code	Advantage				Essence	Doors			Drawer Fronts		
	Price	Exposed End (ea.)	Flush End (ea.)	Shelf	Price	Inset	1/2"	1-1/4"	Inset	1/2"	1-1/4"
LF2D3029.5				—		—	—	—	4.4	5.1	5.7
LF2D3629.5				—		—	—	—	5.4	6.1	6.8

Options Key: D=Number of Doors DF=Number of Drawer Fronts DB=Drawer Boxes EXT=Extended Stiles EXP=Exposed End(s)
FL=Flush End(s) WS=Solid Wood Shelves MI=Matching Interior FT=Flush Toe

LFS/CSLFS - Letter File Slot

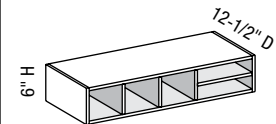


Custom Size Ranges
 Width: 24" – 29-15/16"
 Height: 6"
 Depth: 12-1/2"

D	DF	DB	EXT	EXP	FL	WS	MI	FT
				STD			STD	

- Advantage line only.
- 1/2" matching specie doweled plywood construction.
- Exposed edges are banded with matching specie veneer.
- When width changes vertical openings change.

Cabinet Code	Advantage				Essence	Doors			Drawer Fronts		
	Price	Exposed End (ea.)	Flush End (ea.)	Shelf	Price	Inset	1/2"	1-1/4"	Inset	1/2"	1-1/4"
LFS246		—	—	—	—	—	—	—	—	—	—
LFS276		—	—	—	—	—	—	—	—	—	—

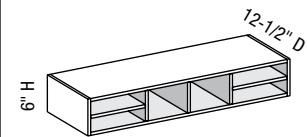


Custom Size Ranges
 Width: 30" – 32-15/16"
 Height: 6"
 Depth: 12-1/2"

D	DF	DB	EXT	EXP	FL	WS	MI	FT
				STD			STD	

- Advantage line only.
- 1/2" matching specie doweled plywood construction.
- Recessed back design for custom depth modification.
- Exposed edges are banded with matching specie veneer.
- When width changes vertical openings change.

Cabinet Code	Advantage				Essence	Doors			Drawer Fronts		
	Price	Exposed End (ea.)	Flush End (ea.)	Shelf	Price	Inset	1/2"	1-1/4"	Inset	1/2"	1-1/4"
LFS306		—	—	—	—	—	—	—	—	—	—

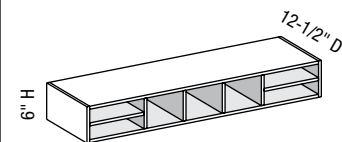


Custom Size Ranges
 Width: 33" – 38-15/16"
 Height: 6"
 Depth: 12-1/2"

D	DF	DB	EXT	EXP	FL	WS	MI	FT
				STD			STD	

- Advantage line only.
- 1/2" matching specie doweled plywood construction.
- Exposed edges are banded with matching specie veneer.
- When width changes vertical openings change.

Cabinet Code	Advantage				Essence	Doors			Drawer Fronts		
	Price	Exposed End (ea.)	Flush End (ea.)	Shelf	Price	Inset	1/2"	1-1/4"	Inset	1/2"	1-1/4"
LFS336		—	—	—	—	—	—	—	—	—	—
LFS366		—	—	—	—	—	—	—	—	—	—



Custom Size Ranges
 Width: 39" – 44-15/16"
 Height: 6"
 Depth: 12-1/2"

D	DF	DB	EXT	EXP	FL	WS	MI	FT
				STD			STD	

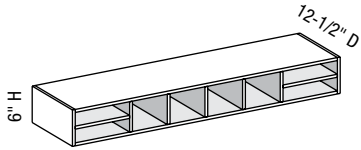
- Advantage line only.
- 1/2" matching specie doweled plywood construction.
- Exposed edges are banded with matching specie veneer.
- When width changes vertical openings change.

Cabinet Code	Advantage				Essence	Doors			Drawer Fronts		
	Price	Exposed End (ea.)	Flush End (ea.)	Shelf	Price	Inset	1/2"	1-1/4"	Inset	1/2"	1-1/4"
LFS396		—	—	—	—	—	—	—	—	—	—
LFS426		—	—	—	—	—	—	—	—	—	—

Options Key: D=Number of Doors DF=Number of Drawer Fronts DB=Drawer Boxes EXT=Extended Stiles EXP=Exposed End(s)
 FL=Flush End(s) WS=Solid Wood Shelves MI=Matching Interior FT=Flush Toe



LFS/CSLFS - Letter File Slot



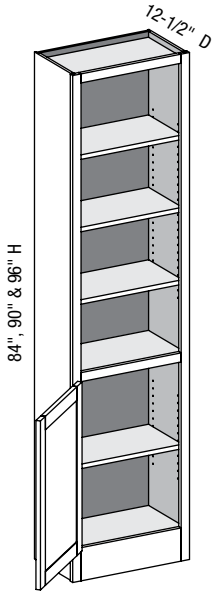
Custom Size Ranges
Width: 45" - 48"
Height: 6"
Depth: 12-1/2"

D	DF	DB	EXT	EXP	FL	WS	MI	FT
				STD				STD

- Advantage line only.
- 1/2" matching specie doweled plywood construction.
- Exposed edges are banded with matching specie veneer.
- When width changes vertical openings change.

Cabinet Code	Advantage				Essence	Doors			Drawer Fronts		
	Price	Exposed End (ea.)	Flush End (ea.)	Shelf	Price	Inset	1/2"	1-1/4"	Inset	1/2"	1-1/4"
LFS456		—	—	—	—	—	—	—	—	—	—
LFS486		—	—	—	—	—	—	—	—	—	—

ORC/CSORC - Other Room Cabinet

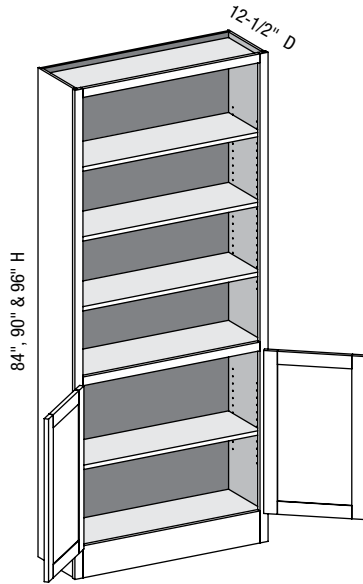


Custom Size Ranges
Width: 12" - 24"
Height: 84" - 96"
Depth: 5-1/2" - 30"

D	DF	DB	EXT	EXP	FL	WS	MI	FT
1			✓	✓	✓	✓	✓	STD

- 5-1/2" high flush toe.
- Doors on top section are optional and must be specified.
- Lower section aligns with 34-1/2" high base cabinets.
- When height changes, upper opening height changes. Lower opening height fixed at 27-1/2".
- Specify single or butt doors on cabinets 24" wide.

Cabinet Code	Advantage				Essence	Doors			Drawer Fronts		
	Price	Exposed End (ea.)	Flush End (ea.)	Shelf	Price	Inset	1/2"	1-1/4"	Inset	1/2"	1-1/4"
ORC1584						2.2	2.6	2.9	—	—	—
ORC1884						2.8	3.2	3.6	—	—	—
ORC2184						3.4	3.8	4.2	—	—	—
ORC1590						2.2	2.6	2.9	—	—	—
ORC1890						2.8	3.2	3.6	—	—	—
ORC2190						3.4	3.8	4.2	—	—	—
ORC1596						2.2	2.6	2.9	—	—	—
ORC1896						2.8	3.2	3.6	—	—	—
ORC2196						3.4	3.8	4.2	—	—	—

ORC/CSORC - Other Room Cabinet w/Butt Doors


Custom Size Ranges
 Width: 24"– 36"
 Height: 84"– 96"
 Depth: 5-1/2"– 30"

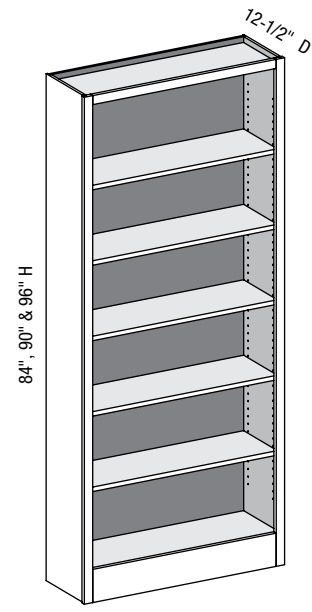
D	DF	DB	EXT	EXP	FL	WS	MI	FT
2			✓	✓	✓	✓	✓	STD

- 5-1/2" high flush toe.
- Doors on top section are optional and must be specified.
- Lower section aligns with 34-1/2" high base cabinets.
- When height changes, upper opening height changes. Lower opening height fixed at 27-1/2".
- Specify single or butt doors on cabinets 24" wide.

Cabinet Code	Advantage			Essence	Doors			Drawer Fronts			
	Price	Exposed End (ea.)	Flush End (ea.)	Shelf	Price	Inset	1/2"	1-1/4"	Inset	1/2"	1-1/4"
ORC2484						3.9	4.3	4.7	—	—	—
ORC2784						4.5	4.9	5.4	—	—	—
ORC3084						5.0	5.5	6.0	—	—	—
ORC3384						5.6	6.1	6.6	—	—	—
ORC3684						6.2	6.7	7.2	—	—	—
ORC2490						3.9	4.3	4.7	—	—	—
ORC2790						4.5	4.9	5.4	—	—	—
ORC3090						5.0	5.5	6.0	—	—	—
ORC3390						5.6	6.1	6.6	—	—	—
ORC3690						6.2	6.7	7.2	—	—	—
ORC2496						3.9	4.3	4.7	—	—	—
ORC2796						4.5	4.9	5.4	—	—	—
ORC3096						5.0	5.5	6.0	—	—	—
ORC3396						5.6	6.1	6.6	—	—	—
ORC3696						6.2	6.7	7.2	—	—	—



ORS/CSORS - Other Room Shelf



Custom Size Ranges
Width: 12" – 36"
Height: 84" – 96"
Depth: 5-1/2" – 30"

D	DF	DB	EXT	EXP	FL	WS	MI	FT
			✓	✓	✓	✓	✓	STD

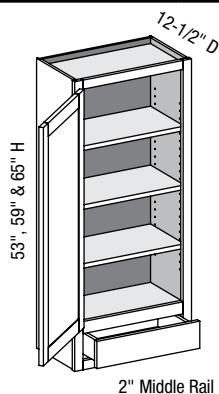
• 5-1/2" high flush toe.

Cabinet Code	Advantage				Essence	Doors			Drawer Fronts		
	Price	Exposed End (ea.)	Flush End (ea.)	Shelf	Price	Inset	1/2"	1-1/4"	Inset	1/2"	1-1/4"
ORS1584						—	—	—	—	—	—
ORS1884						—	—	—	—	—	—
ORS2184						—	—	—	—	—	—
ORS2484						—	—	—	—	—	—
ORS2784						—	—	—	—	—	—
ORS3084						—	—	—	—	—	—
ORS3384						—	—	—	—	—	—
ORS3684						—	—	—	—	—	—
ORS1590						—	—	—	—	—	—
ORS1890						—	—	—	—	—	—
ORS2190						—	—	—	—	—	—
ORS2490						—	—	—	—	—	—
ORS2790						—	—	—	—	—	—
ORS3090						—	—	—	—	—	—
ORS3390						—	—	—	—	—	—
ORS3690						—	—	—	—	—	—
ORS1596						—	—	—	—	—	—
ORS1896						—	—	—	—	—	—
ORS2196						—	—	—	—	—	—
ORS2496						—	—	—	—	—	—
ORS2796						—	—	—	—	—	—
ORS3096						—	—	—	—	—	—
ORS3396						—	—	—	—	—	—
ORS3696						—	—	—	—	—	—

Options Key: D=Number of Doors DF=Number of Drawer Fronts DB=Drawer Boxes EXT=Extended Stiles EXP=Exposed End(s)
FL=Flush End(s) WS=Solid Wood Shelves MI=Matching Interior FT=Flush Toe



W1D/CSW1D - Wall One Drawer



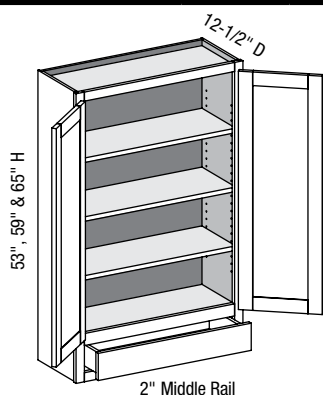
Custom Size Ranges
Width: 12"– 24"
Height: 30"– 66"
Depth: 12", 12-1/2",
15", 18", 21", 24"

D	DF	DB	EXT	EXP	FL	WS	MI	FT
1	1	1	✓	✓	✓	✓	✓	

- 30"– 35-15/16" high has one shelf.
- 36"– 47-15/16" high has two shelves.
- 48"– 59-15/16" high has three shelves.
- 60"– 66" high has four shelves.
- Specify single or butt doors on cabinets 24" wide.
- When height changes, upper opening height changes. Lower opening height fixed at 4".
- Cabinets ordered with Blum STANDARD 230 slides will receive ball bearing full extension slides.
- 12", 12-1/2" and 15" deep cabinets available with TANDEM only.

Cabinet Code	Advantage				Essence	Doors			Drawer Fronts		
	Price	Exposed End (ea.)	Flush End (ea.)	Shelf	Price	Inset	1/2"	1-1/4"	Inset	1/2"	1-1/4"
W1D1553						3.6	4.1	4.7	0.3	0.5	0.5
W1D1853						4.5	5.0	5.7	0.4	0.6	0.6
W1D2153						5.4	5.9	6.6	0.5	0.7	0.7
W1D2453						6.3	6.9	7.6	0.6	0.8	0.9
W1D1559						4.1	4.6	5.3	0.3	0.5	0.5
W1D1859						5.1	5.7	6.4	0.4	0.6	0.6
W1D2159						6.2	6.7	7.5	0.5	0.7	0.7
W1D2459						7.2	7.8	8.6	0.6	0.8	0.9
W1D1565						4.6	5.1	5.9	0.3	0.5	0.5
W1D1865						5.7	6.3	7.1	0.4	0.6	0.6
W1D2165						6.9	7.5	8.3	0.5	0.7	0.7
W1D2465						8.1	8.7	9.5	0.6	0.8	0.9

W1D/CSW1D - Wall One Drawer w/Butt Doors



Custom Size Ranges
Width: 24"– 36"
Height: 30"– 66"
Depth: 12", 12-1/2",
15", 18", 21", 24"

D	DF	DB	EXT	EXP	FL	WS	MI	FT
2	1	1	✓	✓	✓	✓	✓	

- 30"– 35-15/16" high has one shelf.
- 36"– 47-15/16" high has two shelves.
- 48"– 59-15/16" high has three shelves.
- 60"– 66" high has four shelves.
- Specify single or butt doors on cabinets 24" wide.
- When height changes, upper opening height changes. Lower opening height fixed at 4".
- Cabinets ordered with Blum STANDARD 230 slides will receive ball bearing full extension slides.
- 12", 12-1/2" and 15" deep cabinets available with TANDEM only.

Cabinet Code	Advantage				Essence	Doors			Drawer Fronts		
	Price	Exposed End (ea.)	Flush End (ea.)	Shelf	Price	Inset	1/2"	1-1/4"	Inset	1/2"	1-1/4"
W1D2453BD						6.3	6.8	7.5	0.6	0.8	0.9
W1D2753BD						7.2	7.8	8.5	0.6	0.9	1.0
W1D3053BD						8.1	8.7	9.5	0.7	1.0	1.1
W1D3353BD						9.0	9.6	10.5	0.8	1.1	1.2
W1D3653BD						9.9	10.6	11.4	0.9	1.2	1.3
W1D2459BD						7.1	7.7	8.5	0.6	0.8	0.9
W1D2759BD						8.2	8.8	9.6	0.6	0.9	1.0

Chart continued on next page.

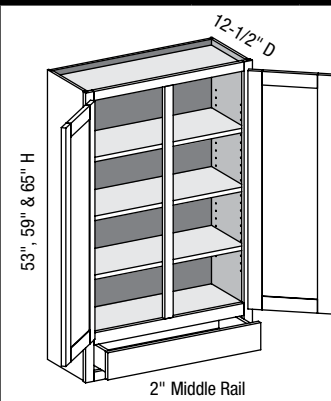
Options Key: D=Number of Doors DF=Number of Drawer Fronts DB=Drawer Boxes EXT=Extended Stiles EXP=Exposed End(s)
FL=Flush End(s) WS=Solid Wood Shelves MI=Matching Interior FT=Flush Toe



W1D/CSW1D - Wall One Drawer w/Butt Doors - continued

Cabinet Code	Advantage				Essence	Doors			Drawer Fronts		
	Price	Exposed End (ea.)	Flush End (ea.)	Shelf	Price	Inset	1/2"	1-1/4"	Inset	1/2"	1-1/4"
W1D3059BD						9.2	9.9	10.7	0.7	1.0	1.1
W1D3359BD						10.2	10.9	11.8	0.8	1.1	1.2
W1D3659BD						11.3	12.0	12.9	0.9	1.2	1.3
W1D2465BD						8.0	8.7	9.5	0.6	0.8	0.9
W1D2765BD						9.2	9.8	10.7	0.6	0.9	1.0
W1D3065BD						10.3	11.0	11.9	0.7	1.0	1.1
W1D3365BD						11.5	12.2	13.2	0.8	1.1	1.2
W1D3665BD						12.6	13.4	14.4	0.9	1.2	1.3

W1D/CSW1DCS - Wall One Drawer w/Center Stile



Custom Size Ranges
Width: 27"– 36"
Height: 30"– 66"
Depth: 12", 12-1/2",
15", 18", 21", 24"

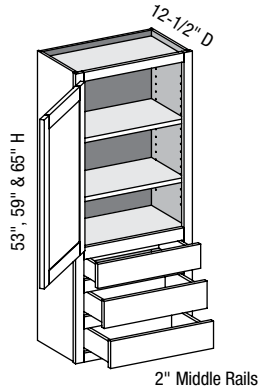
D	DF	DB	EXT	EXP	FL	WS	MI	FT
2	1	1	✓	✓	✓	✓	✓	

- 30"– 35-15/16" high has one shelf.
- 36"– 47-15/16" high has two shelves.
- 48"– 59-15/16" high has three shelves.
- 60"– 66" high has four shelves.
- Specify single or butt doors on cabinets 24" wide.
- When height changes, upper opening height changes. Lower opening height fixed at 4".
- Cabinets ordered with Blum STANDARD 230 slides will receive ball bearing full extension slides.
- 12", 12-1/2" and 15" deep cabinets available with TANDEM only.

Cabinet Code	Advantage				Essence	Doors			Drawer Fronts		
	Price	Exposed End (ea.)	Flush End (ea.)	Shelf	Price	Inset	1/2"	1-1/4"	Inset	1/2"	1-1/4"
W1D2753						6.7	7.7	8.4	0.6	0.9	1.0
W1D3053						7.6	8.6	9.4	0.7	1.0	1.1
W1D3353						8.6	9.5	10.3	0.8	1.1	1.2
W1D3653						9.5	10.5	11.3	0.9	1.2	1.3
W1D2759						7.7	8.7	9.5	0.6	0.9	1.0
W1D3059						8.7	9.7	10.6	0.7	1.0	1.1
W1D3359						9.7	10.8	11.7	0.8	1.1	1.2
W1D3659						10.8	11.9	12.8	0.9	1.2	1.3
W1D2765						8.6	9.7	10.6	0.6	0.9	1.0
W1D3065						9.7	10.9	11.8	0.7	1.0	1.1
W1D3365						10.9	12.1	13.0	0.8	1.1	1.2
W1D3665						12.1	13.3	14.2	0.9	1.2	1.3

Options Key: D=Number of Doors DF=Number of Drawer Fronts DB=Drawer Boxes EXT=Extended Stiles EXP=Exposed End(s)
FL=Flush End(s) WS=Solid Wood Shelves MI=Matching Interior FT=Flush Toe

W3D/CSW3D - Wall Three Drawer



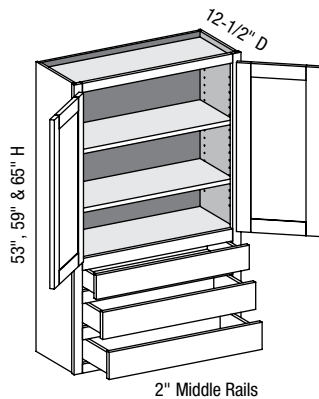
Custom Size Ranges
Width: 12" – 24"
Height: 30" – 66"
Depth: 12", 12-1/2",
15", 18", 21", 24"

D	DF	DB	EXT	EXP	FL	WS	MI	FT
1	3	3	✓	✓	✓	✓	✓	

- 30" – 41-15/16" high has no shelves.
- 42" – 47-15/16" high has one shelf.
- 48" – 59-15/16" high has two shelves.
- 60" – 66" high has three shelves.
- Specify single or butt doors on cabinets 24" wide.
- When height changes, upper opening height changes. Lower opening height fixed at 4".
- Cabinets ordered with Blum STANDARD 230 slides will receive ball bearing full extension slides.
- 12", 12-1/2" and 15" deep cabinets available with TANDEM only.

Cabinet Code	Advantage				Essence	Doors			Drawer Fronts		
	Price	Exposed End (ea.)	Flush End (ea.)	Shelf	Price	Inset	1/2"	1-1/4"	Inset	1/2"	1-1/4"
W3D1553						2.6	3.0	3.5	0.9	1.4	1.6
W3D1853						3.3	3.7	4.2	1.2	1.7	2.0
W3D2153						3.9	4.4	4.9	1.4	2.0	2.3
W3D2453						4.6	5.0	5.6	1.7	2.3	2.7
W3D1559						3.1	3.5	4.1	0.9	1.4	1.6
W3D1859						3.9	4.3	4.9	1.2	1.7	2.0
W3D2159						4.7	5.1	5.8	1.4	2.0	2.3
W3D2459						5.5	6.0	6.6	1.7	2.3	2.7
W3D1565						3.6	4.1	4.7	0.9	1.4	1.6
W3D1865						4.5	5.0	5.7	1.2	1.7	2.0
W3D2165						5.4	5.9	6.6	1.4	2.0	2.3
W3D2465						6.3	6.9	7.6	1.7	2.3	2.7

W3D/CSW3D - Wall Three Drawer w/Butt Doors



Custom Size Ranges
Width: 24" – 36"
Height: 30" – 66"
Depth: 12", 12-1/2",
15", 18", 21", 24"

D	DF	DB	EXT	EXP	FL	WS	MI	FT
2	3	3	✓	✓	✓	✓	✓	

- 30" – 41-15/16" high has no shelves.
- 42" – 47-15/16" high has one shelf.
- 48" – 59-15/16" high has two shelves.
- 60" – 66" high has three shelves.
- Specify single or butt doors on cabinets 24" wide.
- When height changes, upper opening height changes. Lower opening height fixed at 4".
- Cabinets ordered with Blum STANDARD 230 slides will receive ball bearing full extension slides.
- 12", 12-1/2" and 15" deep cabinets available with TANDEM only.

Cabinet Code	Advantage				Essence	Doors			Drawer Fronts		
	Price	Exposed End (ea.)	Flush End (ea.)	Shelf	Price	Inset	1/2"	1-1/4"	Inset	1/2"	1-1/4"
W3D2453BD						4.6	5.0	5.6	1.7	2.3	2.7
W3D2753BD						5.2	5.7	6.3	1.9	2.6	3.0
W3D3053BD						5.9	6.4	7.0	2.1	2.9	3.3
W3D3353BD						6.5	7.1	7.8	2.4	3.2	3.7
W3D3653BD						7.2	7.8	8.5	2.6	3.5	4.0
W3D2459BD						5.4	5.9	6.6	1.7	2.3	2.7
W3D2759BD						6.2	6.7	7.4	1.9	2.6	3.0

Chart continued on next page.

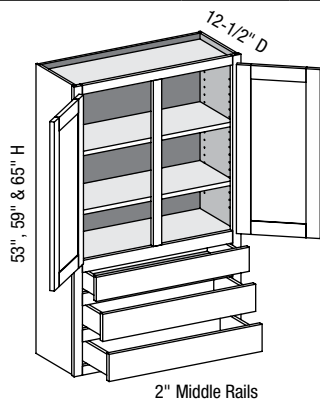
Options Key: D=Number of Doors DF=Number of Drawer Fronts DB=Drawer Boxes EXT=Extended Stiles EXP=Exposed End(s) FL=Flush End(s) WS=Solid Wood Shelves MI=Matching Interior FT=Flush Toe



W3D/CSW3D - Wall Three Drawer w/Butt Doors - continued

Cabinet Code	Advantage				Essence	Doors			Drawer Fronts		
	Price	Exposed End (ea.)	Flush End (ea.)	Shelf	Price	Inset	1/2"	1-1/4"	Inset	1/2"	1-1/4"
W3D3059BD						7.0	7.5	8.3	2.1	2.9	3.3
W3D3359BD						7.8	8.4	9.1	2.4	3.2	3.7
W3D3659BD						8.6	9.2	9.9	2.6	3.5	4.0
W3D2465BD						6.3	6.8	7.5	1.7	2.3	2.7
W3D2765BD						7.2	7.8	8.5	1.9	2.6	3.0
W3D3065BD						8.1	8.7	9.5	2.1	2.9	3.3
W3D3365BD						9.0	9.6	10.5	2.4	3.2	3.7
W3D3665BD						9.9	10.6	11.4	2.6	3.5	4.0

W3D/CSW3DCS - Wall Three Drawer w/Center Style



Custom Size Ranges
Width: 24"– 36"
Height: 30"– 66"
Depth: 12", 12-1/2",
15", 18", 21", 24"

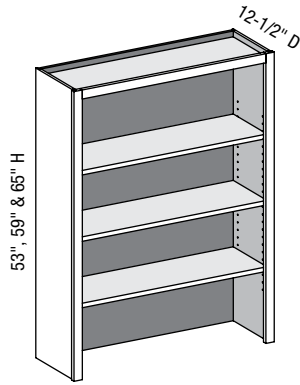
D	DF	DB	EXT	EXP	FL	WS	MI	FT
2	3	3	✓	✓	✓	✓	✓	

- 30"– 41-15/16" high has no shelves.
- 42"– 47-15/16" high has one shelf.
- 48"– 59-15/16" high has two shelves.
- 60"– 66" high has three shelves.
- Specify single or butt doors on cabinets 24" wide.
- When height changes, upper opening height changes. Lower opening height fixed at 4".
- Cabinets ordered with Blum STANDARD 230 slides will receive ball bearing full extension slides.
- 12", 12-1/2" and 15" deep cabinets available with TANDEM only.

Cabinet Code	Advantage				Essence	Doors			Drawer Fronts		
	Price	Exposed End (ea.)	Flush End (ea.)	Shelf	Price	Inset	1/2"	1-1/4"	Inset	1/2"	1-1/4"
W3D2753						4.9	5.6	6.2	1.9	2.6	3.0
W3D3053						5.6	6.3	6.9	2.1	2.9	3.3
W3D3353						6.2	7.0	7.7	2.4	3.2	3.7
W3D3653						6.9	7.7	8.4	2.6	3.5	4.0
W3D2759						5.8	6.6	3.7	1.9	2.6	3.0
W3D3059						6.6	7.4	4.1	2.1	2.9	3.3
W3D3359						7.4	8.3	4.5	2.4	3.2	3.7
W3D3659						8.2	9.1	4.9	2.6	3.5	4.0
W3D2765						6.7	7.7	8.4	1.9	2.6	3.0
W3D3065						7.6	8.6	9.4	2.1	2.9	3.3
W3D3365						8.6	9.5	10.3	2.4	3.2	3.7
W3D3665						9.5	10.5	11.3	2.6	3.5	4.0

Options Key: D=Number of Doors DF=Number of Drawer Fronts DB=Drawer Boxes EXT=Extended Stiles EXP=Exposed End(s)
FL=Flush End(s) WS=Solid Wood Shelves MI=Matching Interior FT=Flush Toe

WOBS/CSWOBS - Wall Open Bookshelf



Custom Size Ranges
 Width: 15" – 36"
 Height: 30" – 66"
 Depth: 5-1/2" – 27"

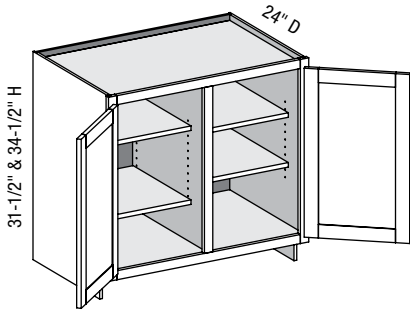
D	DF	DB	EXT	EXP	FL	WS	MI	FT
			✓	✓	✓	✓	✓	

- 30" – 35-15/16" high has one shelf.
- 36" – 47-15/16" high has two shelves.
- 48" – 59-15/16" high has three shelves.
- 60" – 66" high has four shelves.

Cabinet Code	Advantage			Essence	Doors			Drawer Fronts			
	Price	Exposed End (ea.)	Flush End (ea.)	Shelf	Price	Inset	1/2"	1-1/4"	Inset	1/2"	1-1/4"
WOBS1553						—	—	—	—	—	—
WOBS1853						—	—	—	—	—	—
WOBS2153						—	—	—	—	—	—
WOBS2453						—	—	—	—	—	—
WOBS2753						—	—	—	—	—	—
WOBS3053						—	—	—	—	—	—
WOBS3353						—	—	—	—	—	—
WOBS3653						—	—	—	—	—	—
WOBS1559						—	—	—	—	—	—
WOBS1859						—	—	—	—	—	—
WOBS2159						—	—	—	—	—	—
WOBS2459						—	—	—	—	—	—
WOBS2759						—	—	—	—	—	—
WOBS3059						—	—	—	—	—	—
WOBS3359						—	—	—	—	—	—
WOBS3659						—	—	—	—	—	—
WOBS1565						—	—	—	—	—	—
WOBS1865						—	—	—	—	—	—
WOBS2165						—	—	—	—	—	—
WOBS2465						—	—	—	—	—	—
WOBS2765						—	—	—	—	—	—
WOBS3065						—	—	—	—	—	—
WOBS3365						—	—	—	—	—	—
WOBS3665						—	—	—	—	—	—



MC2FD/CSMC2FD - Media Center Two Full Doors



Custom Size Ranges
Width: 30"– 48"
Height: 10"– 48"
Depth: 5-1/2"– 30"

D	DF	DB	EXT	EXP	FL	WS	MI	FT
2			✓	✓	✓	✓	✓	✓

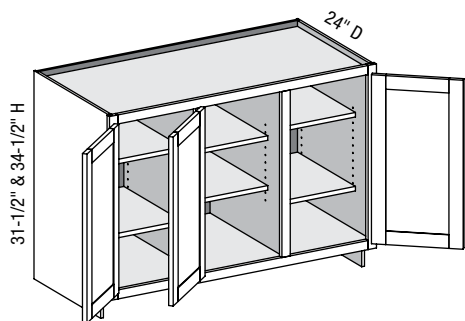
- 10"– 22" high has no shelves.
- 22-1/16"– 28" high has one shelf.
- 28-1/16"– 40" high has two shelves.
- 40-1/16"– 48" high has three shelves.
- Fixed vertical partition with independently adjustable shelves.

Cabinet Code	Advantage				Essence	Doors			Drawer Fronts		
	Price	Exposed End (ea.)	Flush End (ea.)	Shelf	Price	Inset	1/2"	1-1/4"	Inset	1/2"	1-1/4"
MC2FD3031.5						4.2	4.9	5.4	—	—	—
MC2FD3331.5						4.7	5.4	6.0	—	—	—
MC2FD3631.5						5.3	5.9	6.6	—	—	—
MC2FD3931.5						5.8	6.5	7.1	—	—	—
MC2FD4231.5						6.3	7.0	7.7	—	—	—
MC2FD4531.5						6.8	7.5	8.3	—	—	—
MC2FD4831.5						7.3	8.1	8.8	—	—	—
MC2FD3034.5						4.8	5.4	6.0	—	—	—
MC2FD3334.5						5.3	6.0	6.7	—	—	—
MC2FD3634.5						5.9	6.6	7.3	—	—	—
MC2FD3934.5						6.5	7.2	7.9	—	—	—
MC2FD4234.5						7.0	7.8	8.5	—	—	—
MC2FD4534.5						7.6	8.4	9.2	—	—	—
MC2FD4834.5						8.2	9.0	9.8	—	—	—

Options Key: D=Number of Doors DF=Number of Drawer Fronts DB=Drawer Boxes EXT=Extended Stiles EXP=Exposed End(s)
FL=Flush End(s) WS=Solid Wood Shelves MI=Matching Interior FT=Flush Toe



MC3FD/CSMC3FD - Media Center Three Full Doors



Custom Size Ranges
 Width: 48" – 72"
 Height: 10" – 48"
 Depth: 5-1/2" – 30"

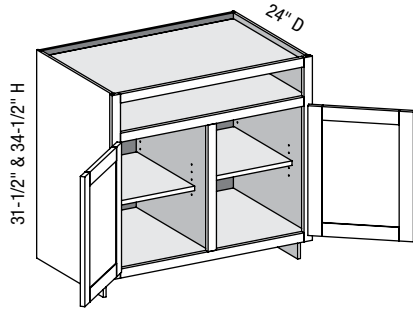
D	DF	DB	EXT	EXP	FL	WS	MI	FT
3			✓	✓	✓	✓	✓	✓

- 10" – 22" high has no shelves.
- 22-1/16" – 28" high has one shelf.
- 28-1/16" – 40" high has two shelves.
- 40-1/16" – 48" high has three shelves.
- Fixed vertical partition with independently adjustable shelves.
- Doors hinged on center style require 1/2" overlay hinges for 1-1/4" and 1-3/8" overlays.

Cabinet Code	Advantage				Essence	Doors			Drawer Fronts		
	Price	Exposed End (ea.)	Flush End (ea.)	Shelf	Price	Inset	1/2"	1-1/4"	Inset	1/2"	1-1/4"
MC3FD4831.5						7.0	8.0	8.7	—	—	—
MC3FD5131.5						7.5	8.5	9.3	—	—	—
MC3FD5431.5						8.0	9.0	9.8	—	—	—
MC3FD5731.5						8.5	9.6	10.4	—	—	—
MC3FD6031.5						9.0	10.1	11.0	—	—	—
MC3FD6331.5						9.5	10.6	11.5	—	—	—
MC3FD6631.5						10.0	11.2	12.1	—	—	—
MC3FD6931.5						10.5	11.7	12.7	—	—	—
MC3FD7231.5						11.0	12.2	13.2	—	—	—
MC3FD4834.5						7.9	8.9	9.7	—	—	—
MC3FD5134.5						8.4	9.5	10.3	—	—	—
MC3FD5434.5						9.0	10.1	10.9	—	—	—
MC3FD5734.5						9.6	10.7	11.6	—	—	—
MC3FD6034.5						10.1	11.3	12.2	—	—	—
MC3FD6334.5						10.7	11.9	12.8	—	—	—
MC3FD6634.5						11.3	12.5	13.4	—	—	—
MC3FD6934.5						11.8	13.1	14.1	—	—	—
MC3FD7234.5						12.4	13.7	14.7	—	—	—



MC2D/CSMC2D - Media Center Two Door



Custom Size Ranges
Width: 30" – 48"
Height: 31-1/2" – 42"
Depth: 5-1/2" – 30"

D	DF	DB	EXT	EXP	FL	WS	MI	FT
2			✓	✓	✓	✓	✓	✓

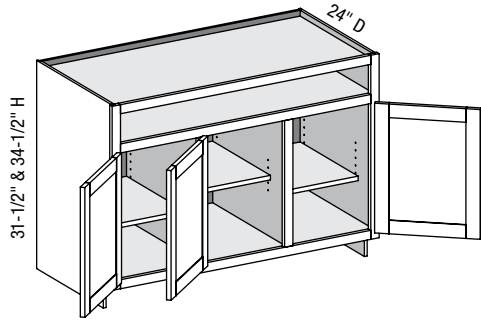
- Fixed vertical partition with independently adjustable shelves.
- When height changes, lower opening height changes. Upper opening height fixed at 5".

Cabinet Code	Advantage				Essence	Doors			Drawer Fronts		
	Price	Exposed End (ea.)	Flush End (ea.)	Shelf	Price	Inset	1/2"	1-1/4"	Inset	1/2"	1-1/4"
MC2D3031.5						3.1	3.6	4.1	—	—	—
MC2D3331.5						3.5	4.0	4.5	—	—	—
MC2D3631.5						3.9	4.4	4.9	—	—	—
MC2D3931.5						4.2	4.8	5.3	—	—	—
MC2D4231.5						4.6	5.2	5.8	—	—	—
MC2D4531.5						5.0	5.6	6.2	—	—	—
MC2D4831.5						5.3	6.0	6.6	—	—	—
MC2D3034.5						3.6	4.2	4.7	—	—	—
MC2D3334.5						4.1	4.7	5.2	—	—	—
MC2D3634.5						4.5	5.1	5.7	—	—	—
MC2D3934.5						4.9	5.6	6.1	—	—	—
MC2D4234.5						5.4	6.0	6.6	—	—	—
MC2D4534.5						5.8	6.5	7.1	—	—	—
MC2D4834.5						6.2	7.0	7.6	—	—	—

Options Key: D=Number of Doors DF=Number of Drawer Fronts DB=Drawer Boxes EXT=Extended Stiles EXP=Exposed End(s)
FL=Flush End(s) WS=Solid Wood Shelves MI=Matching Interior FT=Flush Toe



MC3D/CSMC3D - Media Center Three Door



Custom Size Ranges
 Width: 48"– 72"
 Height: 31-1/2"– 42"
 Depth: 5-1/2"– 30"

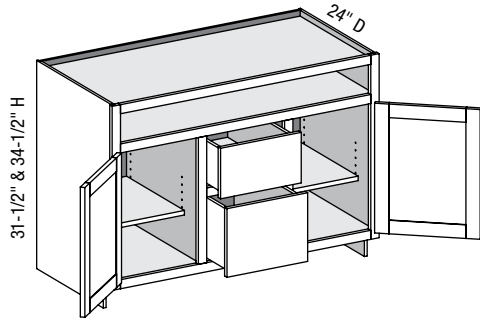
D	DF	DB	EXT	EXP	FL	WS	MI	FT
3			✓	✓	✓	✓	✓	✓

- Fixed vertical partition with independently adjustable shelves.
- When height changes, lower opening height changes. Upper opening height fixed at 5".
- Doors hinged on center style require 1/2" overlay hinges for 1-1/4" and 1-3/8" overlays.

Cabinet Code	Advantage				Essence	Doors			Drawer Fronts		
	Price	Exposed End (ea.)	Flush End (ea.)	Shelf	Price	Inset	1/2"	1-1/4"	Inset	1/2"	1-1/4"
MC3D4831.5						5.1	5.9	6.5	—	—	—
MC3D5131.5						5.5	6.3	7.0	—	—	—
MC3D5431.5						5.9	6.7	7.4	—	—	—
MC3D5731.5						6.2	7.1	7.8	—	—	—
MC3D6031.5						6.6	7.5	8.2	—	—	—
MC3D6331.5						7.0	7.9	8.6	—	—	—
MC3D6631.5						7.4	8.3	9.1	—	—	—
MC3D6931.5						7.7	8.7	9.5	—	—	—
MC3D7231.5						8.1	9.1	9.9	—	—	—
MC3D4834.5						6.0	6.9	7.5	—	—	—
MC3D5134.5						6.4	7.3	8.0	—	—	—
MC3D5434.5						6.9	7.8	8.5	—	—	—
MC3D5734.5						7.3	8.3	9.0	—	—	—
MC3D6034.5						7.7	8.7	9.4	—	—	—
MC3D6334.5						8.2	9.2	9.9	—	—	—
MC3D6634.5						8.6	9.6	10.4	—	—	—
MC3D6934.5						9.0	10.1	10.9	—	—	—
MC3D7234.5						9.5	10.5	11.4	—	—	—



MC2D2D/CSMC2D2D - Media Center Two Door Two Drawer



Custom Size Ranges
Width: 48" – 72"
Height: 31-1/2" – 34-1/2"
Depth: 12", 15", 18"
21", 24", 27", 30"

D	DF	DB	EXT	EXP	FL	WS	MI	FT
2	2	2	✓	✓	✓	✓	✓	✓

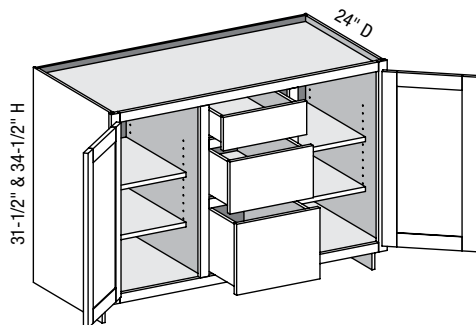
- Fixed vertical partition with independently adjustable shelves.
- When height changes, lower opening height changes. Upper opening height fixed at 5". Middle opening height fixed at 8".
- 12", 15", 27" and 30" cabinet depths are available with TANDEM slides only.

Cabinet Code	Advantage				Essence	Doors			Drawer Fronts		
	Price	Exposed End (ea.)	Flush End (ea.)	Shelf	Price	Inset	1/2"	1-1/4"	Inset	1/2"	1-1/4"
MC2D2D4831.5						3.4	4.0	4.4	1.5	1.9	2.1
MC2D2D5131.5						3.7	4.2	4.7	1.7	2.1	2.2
MC2D2D5431.5						3.9	4.5	5.0	1.8	2.2	2.3
MC2D2D5731.5						4.1	4.8	5.3	1.9	2.3	2.5
MC2D2D6031.5						4.4	5.0	5.6	2.0	2.4	2.6
MC2D2D6331.5						4.7	5.3	5.8	2.1	2.6	2.7
MC2D2D6631.5						4.9	5.5	6.1	2.2	2.7	2.9
MC2D2D6931.5						5.1	5.8	6.4	2.3	2.8	3.0
MC2D2D7231.5						5.4	6.1	6.7	2.4	2.9	3.2
MC2D2D4834.5						4.0	4.6	5.1	1.8	2.2	2.4
MC2D2D5134.5						4.3	4.9	5.4	2.0	2.4	2.5
MC2D2D5434.5						4.6	5.2	5.7	2.1	2.5	2.7
MC2D2D5734.5						4.9	5.5	6.1	2.2	2.7	2.8
MC2D2D6034.5						5.1	5.8	6.4	2.4	2.8	3.0
MC2D2D6334.5						5.4	6.1	6.7	2.5	3.0	3.2
MC2D2D6634.5						5.7	6.4	7.0	2.6	3.1	3.3
MC2D2D6934.5						6.0	6.7	7.3	2.8	3.3	3.5
MC2D2D7234.5						6.3	7.0	7.7	2.9	3.4	3.6

Options Key: D=Number of Doors DF=Number of Drawer Fronts DB=Drawer Boxes EXT=Extended Stiles EXP=Exposed End(s)
FL=Flush End(s) WS=Solid Wood Shelves MI=Matching Interior FT=Flush Toe



MC2D3D/CSMC2D3D - Media Center Two Door Three Drawer



Custom Size Ranges
 Width: 48"– 72"
 Height: 31-1/2"– 34-1/2"
 Depth: 12", 15", 18"
 21", 24", 27", 30"

D	DF	DB	EXT	EXP	FL	WS	MI	FT
2	3	3	✓	✓	✓	✓	✓	✓

- Fixed vertical partition with independently adjustable shelves.
- When height changes, lower opening height changes. Upper opening height fixed at 5". Middle opening height fixed at 8".
- 12", 15", 27" and 30" cabinet depths are available with TANDEM slides only.

Cabinet Code	Advantage				Essence	Doors			Drawer Fronts		
	Price	Exposed End (ea.)	Flush End (ea.)	Shelf	Price	Inset	1/2"	1-1/4"	Inset	1/2"	1-1/4"
MC2D3D4831.5						4.7	5.3	5.9	2.0	2.6	2.7
MC2D3D5131.5						5.0	5.7	6.3	2.1	2.7	2.9
MC2D3D5431.5						5.3	6.0	6.7	2.3	2.9	3.1
MC2D3D5731.5						5.7	6.4	7.0	2.4	3.1	3.3
MC2D3D6031.5						6.0	6.7	7.4	2.6	3.2	3.4
MC2D3D6331.5						6.4	7.1	7.8	2.7	3.4	3.6
MC2D3D6631.5						6.7	7.4	8.2	2.9	3.6	3.8
MC2D3D6931.5						7.0	7.8	8.5	3.0	3.7	4.0
MC2D3D7231.5						7.4	8.1	8.9	3.2	3.9	4.2
MC2D3D4834.5						5.2	5.9	6.6	2.3	2.9	3.0
MC2D3D5134.5						5.6	6.3	7.0	2.5	3.1	3.2
MC2D3D5434.5						6.0	6.7	7.4	2.6	3.3	3.4
MC2D3D5734.5						6.4	7.1	7.8	2.8	3.4	3.6
MC2D3D6034.5						6.8	7.5	8.2	3.0	3.6	3.8
MC2D3D6334.5						7.1	7.9	8.6	3.1	3.8	4.0
MC2D3D6634.5						7.5	8.3	9.1	3.3	4.0	4.2
MC2D3D6934.5						7.9	8.7	9.5	3.5	4.2	4.4
MC2D3D7234.5						8.3	9.1	9.9	3.6	4.4	4.6